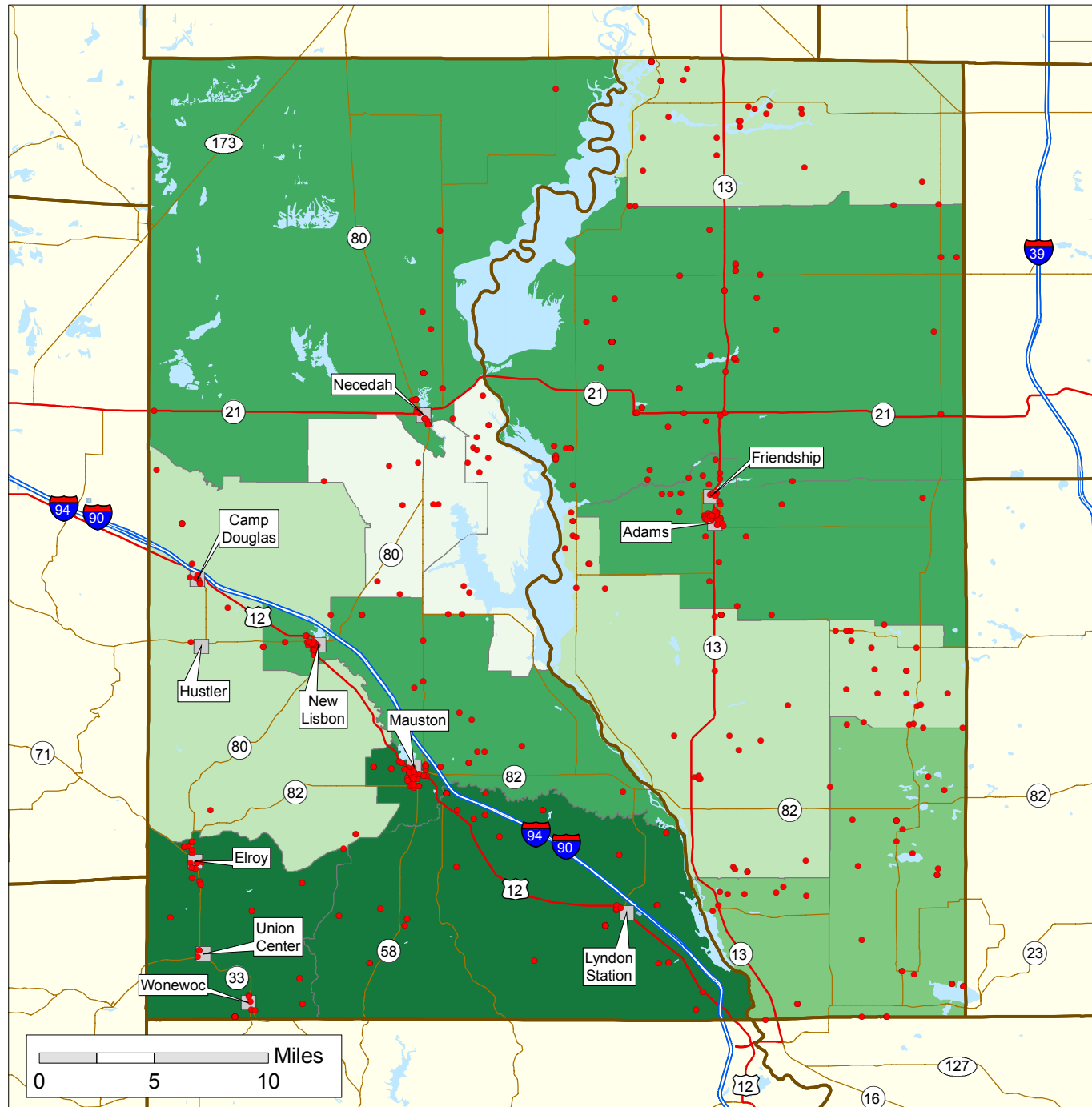


Foreclosure Cases in Adams and Juneau Counties 2005 to 2007

Number of Foreclosure Cases per 100 Housing Units by Census Tract



Number of Foreclosure Cases per 100 Housing Units (by Census Tract)

- 1.0 or Less
- 1.1 to 1.4
- 1.5 to 1.8 (Regional Average)
- 1.9 to 2.2
- 2.3 or More (2.7 is Maximum Value)
- Foreclosure Case
- City or Village Centroid
- Limited Access Highway
- Primary Highway
- Secondary Highway
- County Boundary

Data Sources: U.S. Census Bureau and University of Wisconsin-Extension. Figures are based on unique properties reported in the Consolidated Court Automation Programs case management system.

Calculations by Dr. Russ Kashian, Fiscal and Economic Research Center - University of Wisconsin-Whitewater.

Map Production: Matt Kures - December 2008
UW-Extension Center for Community Economic Development