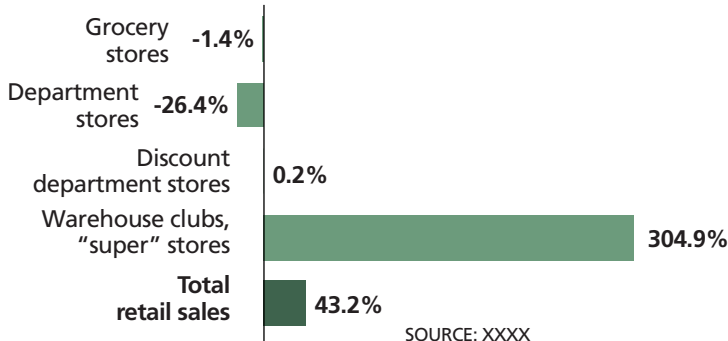


The changing face of retail

Since 1992, retail sales at warehouse stores and "super" stores have increased dramatically, compared with other areas of retail. Change in retail sales between 1992 and 2005 (adjusted for inflation):



SOURCE: XXXX

Part 5 of this month's series on retail stores
Next month's topic: XXX

QUESTIONS: Contact Professor Bill Pinkovitz, Center for Community and Economic Development, UW-Extension at bill.pinkovitz@uwex.edu.

Economic Snapshot is a weekly feature provided by the 