



# Calumet County UW-Extension Community Development News

August/September 2002

---

## Comprehensive Planning Grant Materials and Assistance Available

The State's budget repair bill did not make any changes to Wisconsin's Comprehensive Planning, or "Smart Growth" Law. Planning grants remain at \$3 million per year for the entire state, and the effective date for the consistency requirement remains at 2010.

The Department of Administration's Office of Land Information Services has announced the availability of its Comprehensive Planning Grant Manual, including application forms. The materials are downloadable from the office's web site, <http://www.doa.state.wi.us/olis/> or to request materials by mail call OLIS at 608-267-2707. The deadline for application submission is November 1, 2002. Calumet County communities planning to submit applications in November are welcome to contact Mary Kohrell for assistance with developing an application or designing a Comprehensive Planning process.

The Wisconsin Towns Association (WTA) is hosting six day-long seminars in September for town and village officials. The sessions are presented by WTA staff, Extension educators, a state agency planner, RPC staff and others. The sessions cover comprehensive planning ("the Good, the Bad, and the Ugly"); agricultural/open space/forestry planning; breakout sessions on the plan commission and implementation ordinances; breakout sessions on planning resources and public participation requirements; and finally a "cracker barrel" question and answer session. The fee is \$35 per person, decreasing to \$30 per person if 3 or more attend from the same unit. Town officials can find the agenda and registration form in the August issue of the Towns Association magazine. Call the Towns Association at (715) 526-3157 for more information and to register. Calumet County's closest workshop will be held Friday, September 13 at the Rangeline Inn, Kohler.

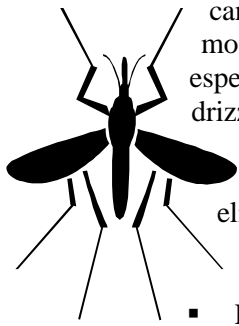
## Reducing Personal and Community Risk from West Nile Virus

In recent weeks, incidents of West Nile Virus (WNV) have hit close to home, and the virus continues to grow throughout the U.S. To help people better understand and reduce complications of WNV, Cornell University's Center for the Environment has developed a fairly extensive website and series of resources about WNV. For those with internet access, the website can be found at: <http://www.cfe.cornell.edu/erap/WNV/>. Further information on WNV in Wisconsin is available at the Dept. of Health and Family Services web site at: [http://www.dhfs.state.wi.us/dph\\_bcd/westnilevirus/](http://www.dhfs.state.wi.us/dph_bcd/westnilevirus/).

According to researchers at Cornell, an action that can be taken at the community level is "mosquito hygiene," which includes source reduction of

mosquito breeding sites and avoidance of biting mosquitoes. Both are key to reducing risk from WNV. Eliminating mosquito breeding sites is also key to reducing risk of pesticide exposure--because most communities will not consider applying mosquito adulticides unless WNV is detected in local bird or mosquito populations. Precautions should continue into the fall until there have been two hard frosts.

Mosquitoes breed in wet areas and are found particularly where there is decaying organic matter (e.g., leaves, grass clippings, animal wastes). There does not have to be much water and the water does not have to be left standing for very long. Some species can reproduce within a week. Thus, they



can reproduce throughout the mosquito breeding season (and especially after each rainstorm, drizzle, watering of the garden or washing the car). Standard recommendations for eliminating mosquito breeding grounds include:

- Eliminate or empty "artificial water-collecting containers" that are prime breeding spots;
- Aerate swimming pools and ponds (and perhaps stock with mosquito-eating fish);
- Empty unused buckets, water troughs, etc.;
- Keep unused tires under cover so they do not collect water;

- Drill drainage holes in tires and other containers used in construction sites, farms, gardens and play areas;
- Clean out rain gutters;
- Clean bird baths and animal water bowls at least once a week; and
- Properly maintain compost piles and other large areas of decaying organic matter.

Avoid mosquito bites by wearing long clothes and/or by using insect repellent when out after dusk or in shaded areas (such as woods) during the daytime. This is when and where most vector species are more likely to bite. People should be especially careful when in "mass gatherings" where the CO<sub>2</sub> given off by the crowd attracts more mosquitoes from a greater distance.

## Grants Available to Support Environmental and Restoration Efforts

**Environmental Education:** The Wisconsin Environmental Education Board (WEEB), located at UW Stevens Point, is seeking proposals for the 2003-2004 environmental education grant cycle. Public and nonpublic educational institutions, all units of government, and corporations (nonprofit, nonstock) are eligible for WEEB grants. Submitted proposals will be evaluated in five categories: general environmental education, forestry education, school forest, energy education, and mini-grants. Projects must be designed for Wisconsin residents and assist learners in achieving the goals of environmental education (EE).



Proposals must meet one or more of five established priorities to be considered for funding. Deadlines are September 26, 2002 for priority A statewide proposals and January 11, 2003 for priority B-E proposals.

For an application or more information on WEEB's environmental education grant programs (including information on previously funded projects) see the Board's website at <http://www.uwsp.edu/cnr/weeb/> or contact Ginny Carlton, Administrative Specialist, at 715-346-3805, email: [weeb@uwsp.edu](mailto:weeb@uwsp.edu).



**Habitat Restoration:** In 2000, the WI DNR Natural Resources Board and the Natural Resources Foundation of Wisconsin started the Stewardship Habitat Restoration Grant Program to help small conservation groups undertake habitat restoration projects. This program grew out of the Knowles-Nelson Stewardship 2000 initiatives established by the Wisconsin legislature.

The Stewardship Habitat Restoration Grant Program provides a unique opportunity to small conservation groups organized under Chapter 181 of the Wisconsin statutes that do not have the resources to acquire 501(c)(3) status. The program recognizes that small conservation groups are capable of planning and implementing worthwhile habitat restoration projects, if only they are supported in those efforts. The Natural Resources Foundation may be able to support these efforts in the form of \$2,500- \$20,000 matching grants and technical expertise necessary to successfully complete these projects. Grant applications are due December 1, 2002. Detailed information about the program can be found at: <http://www.nrfwis.org/grantOpp/hrg/index.htm> or by calling Shahla Werner at 866-264-4096, email [shahla.Werner@dnr.state.wi.us](mailto:shahla.Werner@dnr.state.wi.us).

## Community Development Resources

- **September 26-27, 2002**—A Conference on the Niagara Escarpment: Planning Practices and Smart Growth Strategies. This conference will provide information and education about the Niagara Escarpment's unique resources, physical conditions, and land use issues, and how they can be included into Smart Growth Plans. Conference includes lectures by state and international experts, along with field trips. Held at UW Green Bay. Cost is \$25 for Day 1; \$15 for Day 2; \$30 for both days. For a copy of the registration brochure, contact Mary Kohrell at 920-849-1450.
- **October 8, 2002**--Cooperative Extension's Local Government Center--Current Issues Affecting Local Government Officials WisLine Series "Sheehy Commission" Program # 1663-2. Governor McCallum charged this task force on state and local relations to find ways to make local government more efficient and cost effective. Learn what the draft recommendations are that the task force has suggested as a part of the elections dialogue and which may be included in the 2003-2005 biennial budget. Program is available at any WisLine site at local UWEX offices. 10:30 a.m. 11:50 a.m. Fee: \$12 per session. Contact WisLine Registrations (608) 262-0810.
- **October 10, 2002**--Cooperative Extension's Local Government Center--Local Transportation Issues WisLine Series-- "Road Right-of-Way" Program #1664-1. Your opportunity to learn more about proven techniques to acquire right-of-way for your local projects. The program includes easements, informal agreements, transfers and condemnation, and also covers how to determine your existing right-of-way. Program is available at any WisLine site at local UWEX offices. 10:30 a.m.-12:20 p.m. Fee: \$15.00 per session. Contact WisLine Registrations (608) 262-0810.
- The UW Madison Department of Landscape Architecture has a group of 20 graduate and undergraduate students ready to donate one year of their professional service to community service. Students are able to contribute to community-based design and /or planning issues such as community open space systems, historic preservation, ag land preservation and development, native landscape restoration, and a variety of other project types. Participating governments need to have a local steering committee and offer a small grant to cover the student's out-of-pocket expenses. For more information, contact Mary at the Calumet County UWEX office.
- Communities interested in downtown development may want to read "Let's Talk Business," a monthly newsletter that provides ideas for expanding retail and services in your community published by the Center for Community Economic Development. It is available online at <http://www.uwex.edu/ces/cced/publicat/letstalk.html> or printed copies are available upon request from Calumet County UWEX.

This newsletter is produced every two months by Mary Kohrell, Community Resource Development Educator, Calumet County UW Extension office. For further information about any of the information that appears in this newsletter or to submit ideas for future articles, contact Mary at 920-849-1450 or 989-2700; or by e-mail at [mary.kohrell@ces.uwex.edu](mailto:mary.kohrell@ces.uwex.edu)

An EEO/Affirmative Action employer, University of Wisconsin-Extension provides equal opportunities in employment and programming, including Title IX requirements. Please make requests for reasonable accommodations to ensure equal access to educational programs as early as possible preceding the scheduled program, service or activity. Call (920) 849-1450 or (920) 989-2700 to request an accommodation.