
CALUMET LEADS

VOLUME 3 February 2003

Hi Volunteer Leaders,

I have a secret for all volunteers. Want to hear it? *Asking for help is OK!* To demonstrate this secret, I'll share a story.

A young boy was walking with his father along a country road. When they came across a very large tree branch the boy asked, "Do you think I could move that branch?" His father answered, "If you use all your strength, I'm sure you can." So the boy tried mightily to lift, pull and push the branch but he couldn't move it. Discouraged, he said, "Dad, you were wrong. I can't do it." His dad said, "Try again." This time, as the boy struggled with the branch his father joined him and together they pushed the branch aside. "Son," the father said, "the first time you didn't use all your strength. You didn't ask me to help."

This is an important lesson for all volunteers. There are many times we can't do our volunteer job alone, but that doesn't mean we can't do it. We all are surrounded by resources that can be mobilized to help us achieve our group's goals, including family, friends and passion for our volunteer job. Sometimes we fail to ask for help because of pride or stubbornness. Sometimes we think it's a sign of weakness to admit we need a hand. And sometimes we don't even think about asking for help. Whatever the reason, it's a waste.

It's important that we learn to use all our strength, and this includes inner resources such as discipline, courage and caring. But it also includes outer resources. Just as we should be willing to help others, we should be willing to ask the help of others. It's one of the great things about being human.



Sincerely,

Faden Fulleylove-Krause

Faden Fulleylove-Krause
Family Living Educator
Calumet County UW-Extension

requirements. Please make requests for reasonable accommodations to ensure equal access to educational programs as early as possible preceding the scheduled program, service or activity. Call (920) 849-1450 or (920) 989-2700 to request an accommodation.

Calumet County UW-Extension Office
206 Court Street
Chilton, WI 53014-1198
920-849-1450, 920-989-2700
FAX: (920) 849-1614

February 2003

Dear Partner, Collaborator, and/or Affiliated Organization:

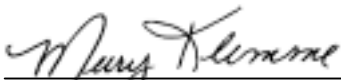
Periodically, UW-Extension is required to take steps to assure that our partners know and understand our policy of nondiscrimination. This letter is to remind or notify you that the University of Wisconsin-Extension does not discriminate in the treatment of individuals, in the admission or access to its programs and activities, in the provision of services, or in employment.

UW-Extension will not participate with organizations or in activities that discriminate on the basis of any of the legally prohibited categories of discrimination. Categories of prohibited discrimination include race, color, gender/sex, creed, disability, religion, national origin, ancestry, age, sexual orientation, pregnancy, marital or parental status, arrest or conviction record, or membership in the National Guard, state defense force or any other reserve component of the military service.

Consistent with the Americans with Disabilities Act, persons who need materials in alternative formats or other accommodations must write or call the UW-Extension contact person for the specific program area: 4-H & Youth - Merry Klemme; Family Living - Faden Fulleylove-Krause; Agriculture - Matt Glewen; and Community Resource Development - Mary Kohrell, at least 10 working prior to the event. They can be reached at (920) 849-1450 or (920) 989-2700. Individuals who need **TTY** access may contact the Calumet County Clerk's Office at (920) 849- 1492.

On behalf of Calumet County and the University of Wisconsin-Extension, we want to thank you for collaborating with our faculty and staff in our many educational endeavors. We appreciate your support and cooperation as we provide educational programs designed to empower the diverse citizens of Calumet County. If there is anything further we need to inform you of regarding our nondiscrimination policy, we will contact you.

Sincerely,
Calumet County UW-Extension Agents/Educators



Merry Klemme
4-H Youth Development Agent



Faden Fulleylove-Krause
Family Living Educator



Mary Kohrell
Community Development Educator



Matt Glewen
Agriculture Agent

LEADERSHIP

Put a Wow in Every Tomorrow



- ❖ **Develop an attitude of gratitude.**
Remember the blessings in your life. It's like sprinkling sunshine on a day.
- ❖ **Encourage others.**
When someone has a goal, be the one to point out the possibilities.
- ❖ **Give sincere compliments.**
We all like to be remembered for our best moments.
- ❖ **Keep growing.**
Walk a different path. Take a class. Read something inspiring.
- ❖ **Give the gift of forgiveness.**
Forgiveness is a blessing for the one who forgives as well as for the one who is forgiven.
- ❖ **Take care of yourself.**
Exercise; eat a healthy diet, sing, and dance a little bit every day.
- ❖ **Do Random Acts of Kindness**
The most fun is when the other person doesn't know who did it.
- ❖ **Treasure relationships.**
Eat meals together, take walks, listen. Share laughter and tears. Make memories.

Reference: Gray, A., Stephens, S., & Van Diest, J. (2001). Lists to live by. Sisters, OR: Multnomah Publishers

Claiming Our Gifts

Each of us has a gift, a unique and native talent, a talent with which we are born, a talent that can be nurtured and enveloped. A gift is something you have (possess) to contribute to work and to the activity of leadership; once discerned, it is something you have to (must) contribute.

It is hard to discern our gifts primarily because they are so much a part of who we are. So much so that it helps shape our identity, yet precisely because this is true we often fail to discern it.

Here is the clearest way I know to discern your gift: think of something you have always known how to do, yet you don't remember spending time or effort learning how to do it. It is something you have always been able to do, and do somewhat effortlessly. Is it coming up with a creative idea? Or is it in synthesizing the ideas of others? Is it your talent in organizing work? Is writing something you do well and don't ever remember learning how to do? Instead of having stage fright, have you always enjoyed acting or speaking in front of others? Each of us has mastery in something, and one part of becoming ourselves - who we started out to be - is to understand, appreciate, and claim that gift

Reference: Moxley, R. (2000). Leadership and spirit: breathing new vitality and energy into individuals and organizations. San Francisco: Jossey-Bass

NEED A PROGRAM IDEA?



Faden Fulleylove-Krause, Calumet County's Family Living Educator is available to facilitate presentations to area organizations. Here is a partial list of programs available:

Thriving with Your Spirited Child

Do you know of a child who just has “more” intensity, sensitivity, distractibility, or activity than other children? Learn how understanding a “Spirited Child’s” temperament can help you and them thrive.

Positive Parenting

With 20 plus topics from discipline tools to raising socially responsible children, there must be a topic here of interest to your group. Call for specific topics. These programs have a video basis.

ReFirement: Fire Up for the Best Years of Your Life

Take a look at how you view aging, how you can make the most of aging, and what you want to do with the rest of your life.

Character Counts!

Become familiar with the six pillars of character. Learn how you can become an advocate for Character Counts youth emphasis.

Creating Health

This 4-part video program explores the health and health practices of Wisconsin women based on age.

America Saves

Build wealth not debt, become an American saver.

Who Gets Grandma's Yellow Pie Plate?

If your group hasn't heard this popular presentation, learn how to transfer personal property (non-titled) through the generations. It's still available!

FISH Philosophy: Catch the Spirit, Release the Potential

A fish company in Seattle has turned a terrible job in to FUN and ATTRACTION. Learn how your organization can capture the spirit and release its potential.

Encouraging the Heart

Leaders learn how rewarding and recognizing others can build your volunteer program.

Contact Faden at the UW-Extension office 920-849-1450 or 989-2700 to discuss dates available. Her e-mail is faden.fulleylove-krause@ces.uwex.edu

UW-EXTENSION FAMILY LIVING PROGRAMS

Better Kid Care Satellite Workshops 2003
6:00-8:00 p.m. Room 25, Calumet County Courthouse



March 20, 2003 (10 AM – 1 PM) **Hot Topics for Center Directors: Recruiting, Hiring and Training Staff**

April 10, 2003 - **Activities for Learning Math: Numbers, Colors, and Shapes**

(Covers new ideas for math learning; low cost - no cost, fun activities; helping parents understand what children are learning; and setting up the room for math learning.)

May 8, 2003 - **Active Times – Quiet Times: Making Transitions Easier** (Covers nap time, drop off, and pick up; fun activities to make clean-up easier; and ideas for calming the chaos.)

To Register: Call Linda at the UW-Extension Office at (920) 849-1450 or 989-2700. Registration is needed at least one week prior to the workshop date. Registry hours available.

UPDATE On Groundwater Guardian Program

In March 2002, Calumet Association for Home and Community Education (HCE) sponsored a program on Groundwater. The speakers talked about an upcoming countywide water-testing program. The results represent 180 wells throughout Calumet County: 46% of the samples taken contained coliform bacteria; 37% of the samples were over the 10-PPM health standard for nitrates.

Both of these substances can be harmful to your health and both indicate some form of groundwater pollution. Any rural household interested in obtaining a sample bottle to have a groundwater test can contact the Calumet County Land and Water Conservation Department at 920-849-1444 for more information and instructions.

In an effort to decrease the amount of groundwater pollution taking place in Calumet County, a citizen-based group called the **Groundwater Guardian** is being formed and your participation is invited. This is a national organization that sees the needs in Calumet County and wants to help. The goals of this group include: educating the public about groundwater and protecting groundwater quality. The first Groundwater Guardian meeting was held in January. Plans to implement this program have begun. Anyone interested in participating or receiving more information is urged to contact the UW-Extension office.

Get Checking



UWEX and FISC sponsor these 6-hour workshops to help individuals qualify for a checking or savings account. Having an account at a financial institution can save you money cashing your paycheck and paying bills. The next classes are offered in the Fox Valley February 20 and 27 and again March 18 and 25. All classes run from 5:45 p.m. – 8:45 p.m. The registration fee is \$20. For information contact the UWEX office at 849-1450 or 989-2700. To register, contact FISC at 1-800-366-8161.

Hospice Foundation of America
Tenth Annual *Living With Grief*® Satellite

Living With Grief: Coping With Public Tragedy

April 30, 2003

12:15 p.m. - 3:30 p.m.

Calumet County Courthouse, Rm. 25
Chilton, WI

Local Sponsor:

University of Wisconsin-Coop Extension

**Register by April 1, 2003
for this free program.**

*\$14.00 Companion Books (a \$24.95
value) are available.*

Contact UWEX at (920) 849-
1450 or 989-2700 with names
and phone numbers of
participants and number of
companion books needed.

HFA's live-via-satellite televised broadcast will examine factors that define a public tragedy and offer insight and advice to organizations and professionals as they support their communities and help those coping with loss.

Moderator:

Cokie Roberts, ABC News correspondent

Featured Panel:

Kenneth J. Doka

LaVone Hazell

Marcia Lattanzi-Licht

Nadine Reimer Penner

Marlene A. Young

Sponsored in part by:

Foundation for End of Life Care & Last Acts

In cooperation with:

Adventist Communication Network

Association for Death Education and Counseling

Project on Death in America & The Compassionate Friends

For additional information, call:
Calumet County UW-Extension
(920) 849-1450 or 989-2700





CALUMET ASSOCIATION FOR HOME & COMMUNITY EDUCATION

*Courthouse, Chilton, WI 53014
(920) 849-1450, 989-2700*

FEBRUARY / MARCH 2003

Dear CAHCE Members:

HAPPY NEW YEAR – 2003. Time really does pass quickly. It seems like I just started my term as your county president and now my term is half over.

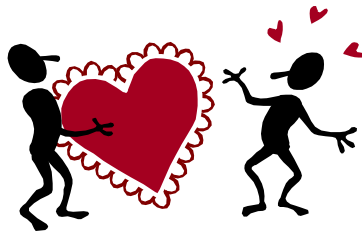


Thank you very much to everyone who helped our organization in 2002. A special thank you to our advisor, Faden Fulleylove-Krause, and her office staff, Linda and Connie.

One of the highlights of 2002 was the hosting of the Fall East District meeting at Darboy in October. We received many compliments on how much members enjoyed this day. It is always nice to get together with the members of other counties and share ideas.

Now it is time to move ahead. We certainly all know the need to increase our membership. That is a problem shared by many organizations.

Please refer to your 2003 HCE Program booklet for the many interesting programs planned for the year. Hope to see many of you at these programs. Feel free to ask a friend to join you anytime.



Sincerely,

Marlys Mathiebe

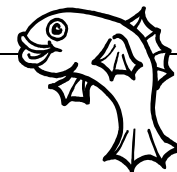
Marlys Mathiebe
CAHCE President



HCE HAPPENINGS

- February 13** Registration deadline for Creativity Day.
- February 20** **Affirmative Action Reports** are due to the UWEX office. Clubs with more than \$25,000 need to submit a 2002 Financial Report to Kay Hertel, CAHCE treasurer.
- Thursday, February 20**
10:00 AM & 1:00 PM **Creativity Day** will be held at the Calumet County Courthouse. Brass Stenciling, Needle Tatting, Hardanger, and Rosemaling classes available. Coordinator: Diane Sattler. See flyer.
- Monday, March 3**
7:30 PM **Family Life and Muslim Traditions in Kosovo** - Meliha Behluli, New Holstein, will share her Muslim traditions in Kosovo and the U.S. This program will be held in Room 17, Calumet County Courthouse.
- March 15** CAHCE scholarship applications due.
- Thursday, March 20**
7:30 PM **Executive Board Meeting**
Room 17, Calumet County Courthouse
- April 4** Registration deadline for Quest for Knowledge.
- Friday, April 11**
9:00 AM – 2:30 PM **Quest for Knowledge** – held at the Calumet County Courthouse. Chair Barb Krueger has a great day planned. Personal Improvement, Egg Art and Health are all offered. See brochure.

***Note:** Please be sure to register your club at least one week prior to each and every program. This way we can insure adequate materials for all participating clubs.*



What Are You Doing With FISH?

The video "Fish Philosophy," filmed at the Pike Place Fish Market in Seattle, illustrates the four philosophies of work: 1) play, 2) make their day, 3) be there, and 4) choose your attitude. These fish market workers have a very positive attitude. When applied to our clubs, we also can play. Do something fun like play games, dress up, have secret pals, wear hats, etc. Don't get in a rut!

Make someone's day by doing something unusual, kind or different. Do the unexpected kindness and see how good you feel and how you brighten someone else's day. "Be there" means be there not just in body, but also with your mind. It means listen to and look at people as you speak to each other, especially at your club meetings. Be there for each other in time of need or distress.

How did you start the day today? Did you ask someone, "How are you?" and were told at length. Or did you say, "Looks like the sun is going to shine today. We'll get a lot done." Choose to be positive! Believe in what you are doing. This also applies to your HCE organization. Work with enthusiasm and have fun.

SCHOLARSHIPS

CAHCE Scholarship

Applications for the Calumet County Home & Community Educator's scholarship (\$150) can be obtained at the UWEX Office. This scholarship for high school seniors, continuing college or technical school students, is available to any child or grandchild of a Calumet County HCE member. Grandchildren who apply must live in Calumet County. There will be no outside publicity on this scholarship. CAHCE members are asked to tell eligible children and grandchildren about this scholarship and encourage them to apply. The application requires a 200-word essay about "My Future Role as a _____," and is due to the UWEX office by March 15, 2003.



Jones-Lee Scholarship

The Jones-Lee Scholarship is awarded to any WAHCE member, their children, stepchildren, and grandchildren. The Jones-Lee Scholarship is to be used toward a 2-year associate degree in vocational school or at a university as a full or part-time student with a minimum of 4 credits. It is a \$1,000.00 scholarship, which will be paid upon proof of enrollment. The application will be in the Communicator. The due date is April 15. Marlys Mathiebe and the UWEX office have the forms.

NOTES FROM PAT

Keep Thursday, May 15, 2003 on your schedule. It is the date for our Spring Fling Cultural Arts program. It is set later in May to avoid the Mother-Daughter Banquet usually in the first part of May. Other plans will be announced in later newsletters.

In an old phrase and poetry book, I ran across this poem by Wilber D. Nesbit.

Who Hath a Book

*Who hath a book
Has friends at hand,
And gold and gear
At his command
And rich estates,
If he but look,
Are held by him
Who hath a book.*



*Who hath a book
He has lent to read
And he may be
A king, indeed;
His kingdom is
His inglenook
All this is his
Who hath a book.*

We recently lost two of our HCE members:

Florence Meyer, a charter member of Harmony Hustlers, Chilton. She was the wife of agricultural agent, Orrin Meyer.

Dorothy Kamke was a charter member of the Go-Getters club, Brillion. She was an active member of the club for the handicapped and blind. Having muscular degeneration herself, she worked hard for that organization, getting motivational speakers. Both she and Florence were of the Lutheran faith and 86 years old.

**Wisconsin Association For Home & Community Education
Cultural & Textile Arts Show
2003 Guidelines**

1. **Pre-registration is required and the August 1, 2003 deadline date will be kept.** Send in forms early, right after your county art show so you don't forget. Poems, essays, and short stories must accompany the entry form.
2. Any items NOT pre-registered will not be judged or on display at the show.
3. Each county can enter a total of 10 entries. I Poem, I Essay, I Short Story, 7 Entries from #1-18. **NO DOUBLE CLASS ENTRIES BY COUNTY.**
4. All work must be done by entrant and finished within the year and have received a blue ribbon from judging at a county cultural and textile arts showing.
5. Kits are allowed and patterns may be used as long as all the work is done by entrant.
6. Photography picture must be an 8" x 10" or larger in size before matted or framed. Panoramic size can be enlarged to proportion 2 to 3 times. Table easels may be brought in for pictures. Please put your name on them.
7. Short Story, Essay, Poem (manuscript), not framed or in book form.
8. Counted Cross Stitch - has a separate category (Easter, Christmas, etc.). Tablecloths can be handstitched or a combination of stitches.
9. NO category changes will be made on entry day of show.
10. All items must be clean or laundered or will be disqualified.
11. When mailing forms, enclose a self-addressed stamped post card to be returned, if you desire.
12. Each sub-category is judged in it's own class.
13. WAHCE is not responsible for any loss or damage of items on display.

2003 Color Coding Entry Forms by Districts:

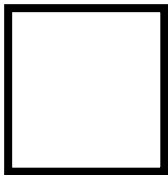
Central - White
Northeast - Yellow
Southwest - Orange

East - Lavender
Northwest - Light Blue
West - Peach

North - Pink
Southeast - Green

Entry Day: Items may be brought in from Noon to 6 PM. Judging will begin at 6 PM. ALL entries will receive a placing and there will be no participation ribbons given. Show viewing will be before lunch and dinner and after banquet. Pick up entries from 7:00 to 8:00 AM only, Thursday only.

Do Not Separate



**Office
use
only**

Category Number _____

Name _____
Telephone _____
Address _____
City/Zip _____
County _____
District _____
Title or Description _____

Category Number _____

Name _____
Telephone _____
Address _____
City/Zip _____
County _____
District _____
Title or Description _____

* Only one entry on each registration form.

Send in this complete form and fill out both sides, one is for on the item on entry day and the other is your claim check to pick up the items. You will get both of these on entry day.

Entries should be sent to: Diane Sattler, W3103 Hwy F, Chilton, WI 53014 by **August 1, 2003.**

**2003 HCE - WI Association for Home and Community Education
Cultural Arts Contest**

1. Paintings - Framed

- A. Oil
- B. Acrylic
- C. China Painting
- D. Pastels
- E. Water Color
- F. Other

2. Drawings

- A. Pencil
- B. Pen & Ink
- C. Charcoal/Conte
- D. Mixed Media
- E. Other

3. Photography

- A. Color-Landscape/Plants
- B. Color-Animals/People
- C. Color-Miscellaneous
- D. Color-Panoramic only
- E. Black/White-Landscape/Plants
- F. Black/White-Animals/People
- G. Black/White-Miscellaneous
- H. Black/White-Panoramic only

4. Clothing

- A. Formal Wear
- B. Children's Wear
- C. Original Designs
- D. Made from Pattern
- E. Wearable Art
- F. Other

5. Knitting

- A. Bedspread
- B. Tablecloth
- C. Wearable Item
- D. Other

6. Crocheting

- A. Bedspread
- B. Tablecloth
- C. Wearable Item
- D. Other

7. Afghan

- A. Crocheting
- B. Knitting
- C. Other

8. Hand Stitchery

- A. Needlepoint
- B. Embroidery
- C. Crewel
- D. Counted Cross Stitch
- E. Counted Cross Stitch -
Only Seasonal
- F. Tablecloth
- G. Plastic Canvas
- H. Hardanger
- I. Sampler (any skill)
- J. Swedish Weaving
- K. Other

9. Rug Making

- A. Hooked
- B. Braided
- C. Crocheted
- D. Other

10. Spinning/Weaving

- A. Hand
- B. Loom

11. Heritage Skills

- A. Rosemaling
- B. Tatting
- C. Quilling
- D. Woodworking
- E. Basketry
- F. Other

12. Ceramics, Porcelain & Pottery

- A. Free form
- B. Commercial Mold
- C. Dolls
- D. Figurines

13. Quilts

- A. Tied Quilt
- Hand Quilted
- B. Pieced
- C. Appliqué/Embroidery
- D. Vest
- E. Other
- Machine Quilted by you
- F. Pieced
- G. Appliqué/Embroidery
- H. Vest
- I. Other
- Machine quilted professionally
- J. Pieced
- K. Appliqué/Embroidery
- L. Vest
- M. Other

14. Wall Hanging

- A. Hand Quilted
- B. Machine Quilted
- C. Paper Pieced Only
- D. Other

15. Miscellaneous Creations

- A. Textile
- B. Wood-Construction
- C. Glass
- D. Handcrafted Toy
- E. Pillow
- F. Painting on Fabric
- G. Painting on Wood
- H. Other

Poem-Essay-Short Story must accompany this form.

16. Poem

No longer than 30 lines.

17. Essay

Original, 1 topic.
250-500 words

18. Short Story

Original that has beginning,
middle & end.
3,000 words or less



Sponsored by



Open
To All

CREATIVITY DAY

Thursday, February 20, 2003
Calumet County Courthouse, Chilton

Brass Stenciling – Dry Embossing 10:00 AM – Room 18

Make about 4 cards using Brass Stencils-Dry Embossing - spring motifs. All materials will be provided, but there is an opportunity to purchase other supplies.

Material cost: \$4.00 --- Class limit 12 --- Instructor: Laurel Sherry, CowTown Stamps

Needle Tatting 10:00 AM – Room 17

Needle tatting is a form of tatting done with a long needle and uses some of the methods used in macramé. This is a beginning class, learn beginning stitches. Needle, thread and instructions will be provided. Bring a scissors.

Material cost: \$7.00 --- Class limit 12 --- Instructor: Diane Sattler

Rosemaling 1:00 PM – Room 18

Introduce yourself to the Norwegian folk art of Rosemaling (rose painting). You will see examples of several styles; learn about the colors, forms and patterns, and paint a small medallion which can be used either as a pendant or an ornament.

Material cost: \$3.00 --- Class limit 12 --- Instructor: Lylene Scholz

Hardanger 1:00 PM – Room 17

Learn about fabrics to use for the thread work known as Hardanger. Basic stitches will be taught after which you will be able to finish a small doily. Fabric, needle and thread will be provided. Bring a scissors.

Material cost: \$3.00 --- Class limit 12 --- Instructor: Diane Sattler

**** LUNCH IS ON YOUR OWN ****

Registration Fee: \$2.00/Class



An EEO/Affirmative Action employer, University of Wisconsin-Extension provides equal opportunities in employment and programming, including Title IX requirements. Please make requests for reasonable accommodations to ensure equal access to educational programs as early as possible preceding the scheduled program, service or activity. Call (920) 849-1450 or (920) 989-2700 to request an accommodation.



Creativity Day Registration Form (DEADLINE – February 13)

Name: _____

Phone: _____

Please check choice(s):

- Brass Stenciling (\$4.00)
- NeedleTatting (\$7.00)
- Rosemaling (\$3.00)
- Hardanger (\$3.00)

Return this form, a \$2.00 registration fee per class, and material fee to:

Calumet Co. UW-Extension
Attn: Linda
206 Court Street
Chilton, WI 53014

Return Service Requested



IN THIS ISSUE

<u>Calumet Leads</u>	<u>Page</u>
Letter to Volunteers	1
Nondiscrimination Letter	2
Leadership	3
Need a Program Idea?	4
Family Living Programs	5
Living With Grief Satellite	6
<u>CAHCE Calumet</u>	
President's Letter	7
HCE Happenings	8
FISH	8
Scholarships	9
Notes from Pat	9
Cultural Arts 2003 Guidelines	10
Cultural Arts 2003 Categories	11
Creativity Day Registration Form	12

