

Clark County

Welcomes You to

**Wisconsin's Dairy
Heartland!**



Why Host Farm Progress Days?

- ⇒ Clark County has a rich history of community involvement.
 - Hosted FPD's in 1983
 - Has a dairy breakfast in every community in the month of June
 - Service clubs in every community willing to provide leaders and volunteers

Why Host Farm Progress Days?

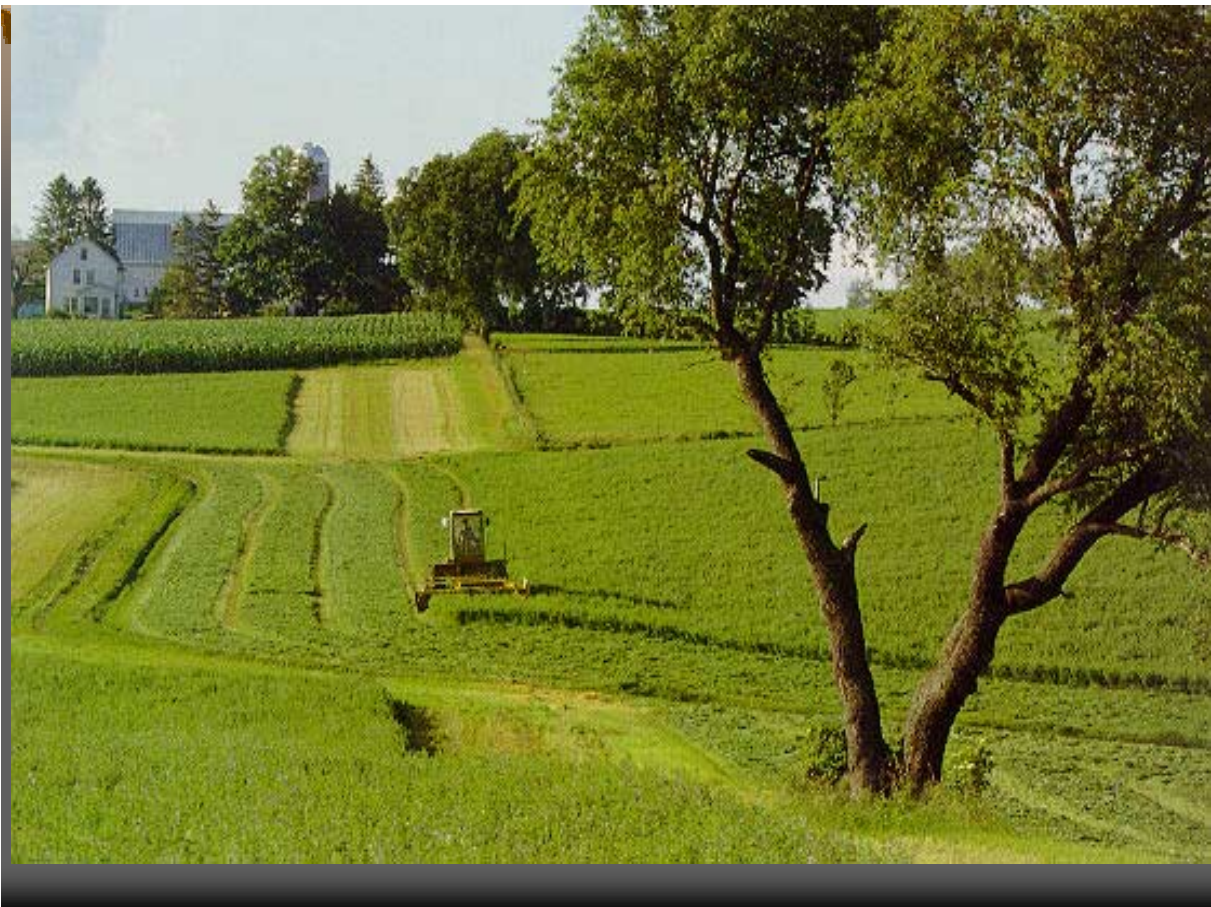
- ⇒ Clark County is Agriculture!
 - Number 2 in number of farms in WI
 - Number 2 in oat production in WI
 - Number 3 in production of corn silage in WI
 - Number 3 in acres of hay forage harvested in WI

Why Host Farm Progress Days?

- ⇒ Clark County is Agriculture!
 - Number 1 in number of Grade A dairy herds in WI
 - Number 1 in total milk pounds produced in WI
 - Number 2 in milk production in WI
 - Number 4 in number of all cattle and calves in WI
- ⇒ Clark County has level terrain with few access problems

Why Host Farm Progress Days?

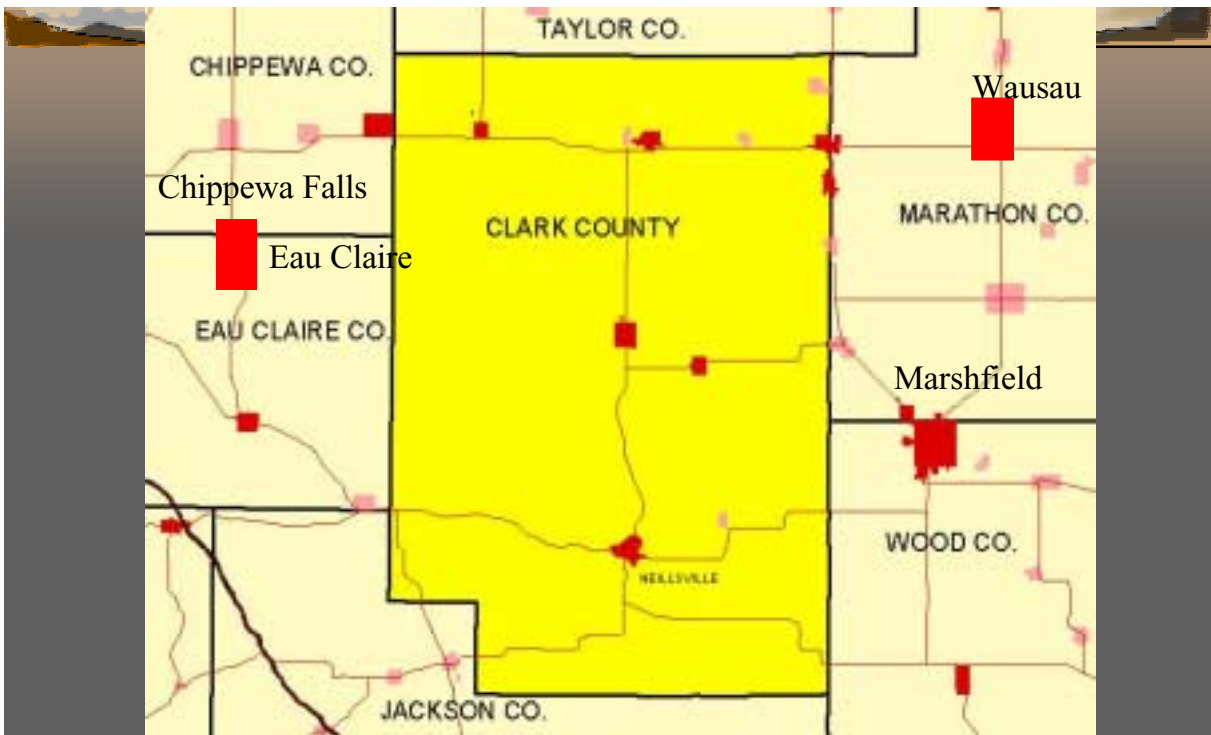
- ⇒ Clark County is centrally located in state
 - 3 hrs will get you to nearly all corners of the state
 - Intersected by major highways
 - Both 4-lane and 2-lane state highways
- ⇒ Support letters prove commitment to hosting a successful event



Getting around in Clark County

ROAD DATA:

- 2,112 miles
- 300 miles of County highways
- Easy access via Highways 10, 13, 29, 73, 95, and 98



General data:

- SIZE: 779,000 acres (7th largest in state)
- POPULATION: approx. 32,000
- LARGEST CITY: Neillsville 2,680
- 90% of population is rural

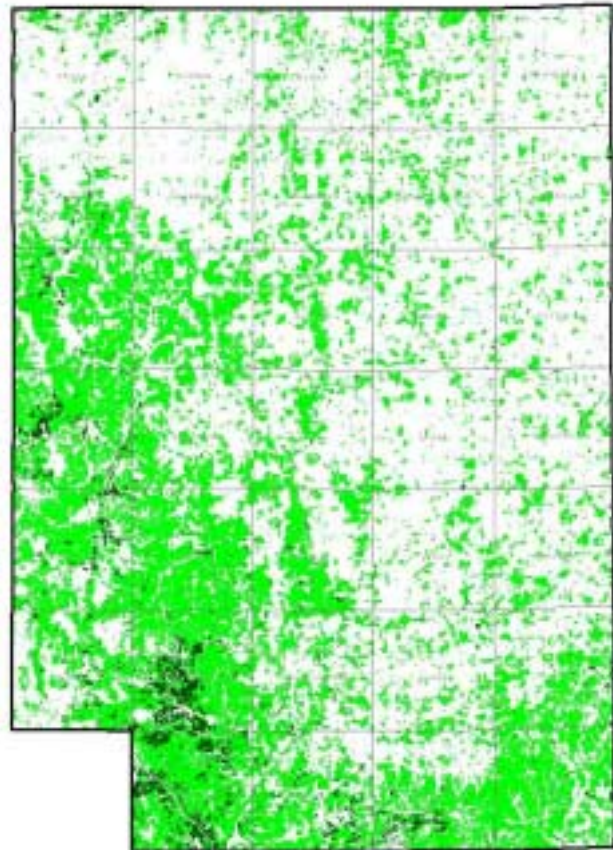
Land Use- Agriculture

- 57 % of Clark County land is used for agriculture
- 460,000 Acres in Agriculture
- Avg. size of farm is 204 acres
- # of farms = 2,260
- No. 2 in state for amount of farms
- 120,500 acres forage production
- 84,700 acres of corn production
- 123,000 head of cattle
- 61,000 dairy cows



Land Use- Forestry

- 133,000 acres of county forest
- County forest first established in 1930
- \$1.5 million in annual revenues from forest lands



Farming Trends in Clark County

TRENDS:

1. Farm numbers are beginning to plateau.
Remaining farms are getting larger (cows/farm, acreage)
2. Many established farms are updating facilities, remodeling or new.
3. An increase of "nontraditional" farms, i.e. Amish and Mennonite communities
4. Some farms are adapting to changing economic realities by lowering input costs through non conventional dairying (management intensive grazing)

Clark County Dairy Facts

- ⇒ Nationally 2nd Best County in which to Dairy Farm (Dairy Today, Feb. 2000)
- ⇒ 2nd Most Dairy Cows in the State (1999 Wisconsin Dairy Facts)
- ⇒ 1,223 Dairy Farms
- ⇒ 56 cows/farm average





Agriculture Infrastructure

- ⇒ **Clark County boasts an impressive array of agricultural manufacturing:**
 - **Meyer Manufacturing, Dorchester**
 - **Loyal Equipment, Loyal**
 - **Roth Manufacturing, Loyal**
 - **Land 'o Lakes Feed- Central Premix Facility, Unity**
 - **Land 'o Lakes Dairy Foods, Greenwood**
 - **Lynn Dairy, Granton**
 - **Foremost Farms USA, Abbotsford**
 - **North Hendren Co-op Dairy, Willard**
 - **Grassland Dairy Products, Greenwood**
 - **Kerry Ingredients, Owen**

The Future—Clark County's Youth in Agriculture

- ⇒ FFA in every High School in Clark County
- ⇒ Over 1,300 4H members, willing to serve



Economic Impact of Agriculture in Clark County

- ⇒ Cash receipts of \$160 million in 1997
- ⇒ Largest employer
- ⇒ Major source of tax base



Lodging

- ⇒ 560 public campground sites
- ⇒ 3109 hotel rooms within 50 mile radius of county boundaries



Thank You for Your Time
and Consideration!

