



JUNEAU COUNTY  
**MASTER GARDENERS** \*

NEWSLETTER

October 2008

UW-Extension Juneau County



# Trick or Treat

## October Master Gardeners Meeting

When: Monday October 27, 2008  
6:30 – 8:30 pm

Where: Boorman House  
Union Street  
Mauston WI 53948

- ☪ Car pool when you can
- ☪ Bring along lawn or folding chair although the meeting will be inside after touring the grounds
- ☪ Refreshments and snacks will be provided by the Executive Board

### Agenda:

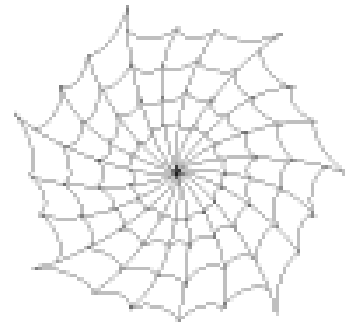
- ☪ Meet and Greet
- ☪ Plant Sale
- ☪ Garden Tour
- ☪ NOTE: Tour of the Boorman House will be after the meeting
- ☪ Magazine and Catalog Swap
- ☪ Approval of September 22 meeting
- ☪ Treasurer's Report

### Directions:

- ☪ In Mauston, on Union Street (Hwy 58)
- ☪ Just in first block past Hwy 82 on west side of street

### Unfinished Business:

- ☪ 2009 WIMGA Conference Update
- ☪ Annual Accomplishment Report
- ☪ Craig presentation on wiregrass and hops
- ☪ Projects for 2008 & 2009
  - ◆ Boorman House
  - ◆ Buckhorn State Park Project
  - ◆ Mauston Food Pantry Project
  - ◆ New Park – Jan Brendle -in memory of Dave Brendle
  - ◆ Community Garden by Bible Baptist Church
  - ◆ HCE (Home and Community Educators)-Jean Morton



### Upcoming Events:

- ☪ Send your Master Gardener Volunteer Hours in to Jan Brendle for Certification.
- ☪ Dues for 2009 can be paid at October meeting.
- ☪ Holiday Decorating at Boorman House
- ☪ 2009 Master Gardener Training in Adams Cty

**Juneau County Master Gardener Meeting Minutes**  
**September 22, 2008 6:30 pm - Sally Spangler Residence**  
**Secretary: Rich Milgrom**

Meet and Greet

Plant Sale

Magazine and catalog swap

Meeting was brought to order by Acting President Sally Spangler.

Approval of August 25th meeting minutes

A Big Thank You to Sally for the garden tour and food.

There were 28 people in attendance and we have 52 total members.

**Treasurer's Report** - Previous Balance: \$ 1,705.04

Expenses:	\$25.00	Juneau County Fair deposit,
	\$33.41	Pat & Duane photo and poster supplies.
Total Expenses:	\$58.41	
Income:	\$309.56	Plant sale - Juneau County Fair
Total Income	\$309.56	
Current Balance:	\$1,956.19	

**Correspondence:**

- Buckhorn State Park (Heather Wolf and Joe Stecker-Kochanski) sent a thank you note for the work done "Super Job". MGVs are going back on October 7<sup>th</sup> at 1pm.
- Carl W. Nelson Animal Shelter sent a thank you for \$39.70 donation from our plant sale.

**Membership Chair Update - Jan Brendle**

- We have 52 members, 37 certified.
- About 20 members have responded.
- Need volunteer hours by due October 1<sup>st</sup>

**Historian Report -**

- Need pictures of fruits and vegetables from members' gardens. Forward to Duane at [duanepat@tds.net](mailto:duanepat@tds.net)

**Unfinished Business:**

- 2009 WIMGA Conference Update- Rich
- Corrections (cranberries - red, potato instead of turnip & carrots instead of wheat) to the logo have been made and will be presented at the next meeting, October 29<sup>th</sup>. Tours are being set up by Wollersheim Winery to International Crane Foundation, Aldo Leopold Legacy Center, Aldo Leopold Shack, includes lunch and tour at their newly updated winery. Approximately 17 speakers have been lined up. Friday's keynote speaker is Neil Diboll (Prairie Nursery) plus Heritage of the Ho-Chunk Nation.
- Sign up for next year's meetings -

April 27th: Library or UW Extension	August 24th: Jean Morton
May 18th: Brigitte Varga	Sept 28th: open
June 22nd: Jan Brendle	Oct 26th: Boorman house was mentioned
July 27th: Linda Johnson	
- Accomplishment report - Theme is Hunger Prevention - Arris has a draft started. Minor adjustments and addition of pictures need to be done.
- Volunteer sign up for question answering at Extension Office - Craig - Specialty questions can be forwarded to specific people. Rosemary Aney volunteered to help out and other volunteers are encouraged to participate. Ext. office is getting a new phone system and will be able to setup a mail box for the volunteers.

**New Business:**

- 2009 Master Gardener Training in Adams - Background Checks: Craig - No dates for training set as yet could possibly be on Saturdays. More at the October meeting. Background checks similar to 4H Club policies. Applies to new certified MGVs, existing members are grandfathered in.
- Fall Youth Forum (4H) - 1 pm September 27<sup>th</sup> - Jean Morton said all 4H Clubs in the county participate. Kids explore projects they can do. MGVs can demonstrate gardening practices. Volunteers are needed - it can be something simple such as starting plants, taking cuttings, etc. Point of Contact is Debby Bollig at [dbollig5@verison.com](mailto:dbollig5@verison.com)
- Community Garden Project in Mauston - Craig - Acreage located near First Baptist Church in Mauston. MGVs approached for advice only, work to be done by church parishioners. Arris, Brigitte and Irene will help out as needed, but more volunteers are needed next spring. The next meeting is Nov. 6<sup>th</sup> at 3 pm at the First Baptist Church.
- Donations to the Community Sharing Pantry - Marsha Lubinski - Thanks to all who helped out - Marsha Lubinski, Debby Bollig, Dee Smith, & Tom Hoilien
- Boorman House- Irene - Nothing new. Discussion at next meeting regarding their needs.

## September 22 Minutes Continued

- Mauston Hospital Garden - Mary Jo - Nothing new to report.
- Buckhorn State Park Project - Maureen Fox - Seven people helped dig up a section, weed and plant. Next work day is October 7<sup>th</sup> at 1pm. Plantings will be done in the spring.
- Mauston Community Sharing Pantry - Marsha Lubinski - Food was brought in for the pantry. We've paid approx. \$150 for mulch for their garden. A motion was made by Maureen that we send \$100 to each local pantry (New Lisbon, Necedah, Elroy, Wonewoc and Mauston). Seconded by Rosemary Aney. Motion carried. Next year we will donate monthly plant sales to each pantry on a rotating basis.
- City of Mauston Design Walkabout - October 2<sup>nd</sup> at 5pm. Gardeners are encouraged to meet in the Community Room at City Hall to make Mauston more vibrant with the help of community groups.

### Projects for 2009

- Community Garden by First Baptist Church - Craig
- New Park in Memory of Dave Brendle, 38<sup>th</sup> St. and Hwy 58 - Jan Brendle
- Home and Community Educators Event, next spring - Jean Morton - Involves all extension offices. Fashioned after Sauk County. There is a fee to enter - plant sales, seminars and silent auctions.

### Garden Meeting Dates and Locations:

- Please call and confirm any events before attending as there may be a change.
- October 27 - Boorman House - Holiday Decorating planning and tour of the grounds.
- Snacks/refreshments will be provided by the Executive Board.
- Craig may do a history presentation on wiregrass and hops.

### Events/Important Dates:

- Wined Down with Hospice Touch - "Wine, Cheese & Chocolate Tasting Fundraiser for Tomah Memorial Hospital Hospice Touch". Tuesday, Oct. 7, 2008 5:00 pm-8:00 pm Valley Inn Restaurant, Hwy 80/82, Elroy, WI. Call 1-800-390-1416 for tickets (\$20 in advance or \$25 at the door).
- Reed's Valley Hosta Farm is having a sale and is open 7 days a week through October from 9 am to 8 pm. Closed most holidays. They are located at 4221 Jackpot Avenue in Sparta. Phone (608) 486-4126.
- See State MG Website for more events <http://www.hort.wisc.edu/mastergardener/>

## Note from Gypsy

Dear Friends

The "Garden Party" is almost over. Mother Nature really challenged us this year. But that's what keeps gardening "FUN!" Maybe next year she will be kinder.

I see she is putting her quilts of orange, yellow, red and many more fall colors over our hillsides. The "feast for your eyes" is her apology for the rough summer. She is a kind soul after all.

Well, prepare for winter!

Until next time

Gypsy Jean

aka Jean Morton



# Craig's Corner

Agriculture Agent 608-847-9329  
Juneau County UW-Extension



Ever wonder what people are asking (or sharing with) the Juneau County Extension Agricultural Agent? Below is a sample of the latest horticultural related issues. Have a question or comment just call 608-847-9329 or email [craig.saxe@ces.uwex.edu](mailto:craig.saxe@ces.uwex.edu) Extension publications mentioned can be found at: <http://learningstore.uwex.edu/>

- **Lady beetles** are beneficial because they feed on harmful insects such as aphids; however one lady beetle species, the multicolored Asian lady beetle has become a common and widespread wintertime household pest. Thankfully they do not feed nor can they reproduce indoors. Prevention is the most effective step in managing lady beetles. Check the outside of your house for spaces and cracks that allow insects' easy entry and make the necessary repairs. For large infestations, spraying pyrethroid insecticides such as permethrin or esfenvalerate to the outside of buildings when the beetles appear may help prevent pest entry. However, once inside, spraying insecticides is of very little benefit. For beetles already inside the most practical control is to vacuum or sweep them up and discard. For more information go to: <http://wihort.uwex.edu/gardenfacts/x1050.pdf>
- **Mushrooms** sprouting up in your lawn with no apparent pattern most likely are feeding on organic matter buried in the soil. The mushroom is the aboveground fruiting or reproductive structure of a fungus that lives on and helps to decay organic matter. The organic matter may include buried logs, lumber, roots, or stumps. Most mushrooms do not damage the lawn, but may be unsightly. Unfortunately, there is no practical or permanent way to eliminate mushrooms. When buried wood is completely decayed, the mushrooms will disappear. Although temporary, you can simply break the mushrooms off with a rake or a lawn mower.
- **Hedge Apple** was a recent discovery for me as I traveled with a friend to help his son move to Oklahoma. Actually, the credit for identification goes to a few Master Gardeners at our last Master Gardener meeting. They also mentioned that Festival Foods in Mauston has been selling them for ornamental purposes. The Hedge Apple is native to a small area in eastern Texas, southeastern Oklahoma, and southwestern Arkansas. It produces non-edible yellow-green grapefruit sized fruit and the plant is armed with half-inch long spines. In its native area it's a tough and durable tree that before barbed wire was widely planted as a living fence. When pruned into a hedge, it provided an impenetrable barrier to livestock.

**NOTE:** Next update will be in the spring of 2009.

If Jimmy cracks corn and no one cares,  
why is there a song about him?

Submitted by Rich Milgrom



# CALENDAR OF EVENTS

**NOTE: Be sure to call & check times & dates to verify event**

Contact for more information on any event at [Olbrich Botanical Gardens](#), 3330 Atwood Ave., Madison, WI 53704; phone (608) 246-4550.

**Oct 23, 2008 - Cold Frames - [Olbrich Botanical Gardens](#), Madison, WI** - Cold frames allow the home gardener to extend the growing season. Cold-season brassicas, such as kale, broccoli, and cauliflower can thrive in a cold frame as early as March and as late as December. Plugs of flowers and warm season vegetables can happily find a March spot in a cold frame. Join Joe Schmidt, a third-generation flower grower, from 6:30 to 8:30 p.m. and discover the basics of constructing your own backyard cold frame. Schmidt will present slides and handouts, plus perform a demonstration of bending the metal bows needed for cold frames. \$13 (\$11 members).

**Oct 24, 2008 (12:00 noon) - Heirloom Fruit and Vegetables - Brown Bag Program** - contact Ext. Office for access - Join Bob Tomesh to learn more about these old varieties of food plants.

**Oct 25, 2008, 9:00 am- 11:30 am – Fall Gardening Seminar – UW Marshfield - Laird Fine Arts Theatre** – Wood County MG presents Garden Design: Emphasizing Native and Natural Landscaping by Pierce County Ext Horticulturalist & Master Gardener Advisor, Diana Alfuth. Limited Seating. \$5.00 materials fee payable at check-in. Registration required by October 20<sup>th</sup>. Call 715-421-8440 for information

**Oct 28, 2008 – Permaculture - [Olbrich Botanical Gardens](#), Madison, WI** - Permaculture is about landscape designs based on the relationships between people, plants, animals, soil, and water. It emphasizes improving soil and optimizing water use, while incorporating food plants such as fruits, nuts, and perennial vegetables. It even means designing animal raising - such as chickens and other poultry - into the landscape! Join Permaculturist Kate Heiber-Cobb, for a talk from 6:30 to 8:30 p.m. on sustainable permaculture philosophies for urban and suburban landscapes. Heiber-Cobb will address simple ways that gardeners can maximize natural ecological relationships. \$13 (\$11 members).

**Nov 13, 2008 - Ornamental Winter Containers - [Olbrich Botanical Gardens](#), Madison, WI** - The growing season isn't the only time for decorative containers. Late fall still provides colorful plant material that can be arranged for container splendor in the fall and winter. Olbrich Horticulture Director Jeff Epping will teach you to collect the right materials and create stunning arrangements in this class from 6:30 to 8:30 p.m. \$56 (\$45 members).

**Nov 14, 2008 (12:00 noon) - Growing Blueberries in a Harsh Wisconsin Climate - Brown Bag Program** - contact Ext. Office for access - The harsh climate of the northern Great Lakes has made successful blueberry production a challenge. But to meet this challenge, new cultivars with better hardiness have been developed. This, with proper site selection and cultural management opens the potential for fruit production. Join us to

review the issues which can lead to the successful growing of blueberry plants.

**Nov 28 - Dec 28, 2008 - Olbrich's Holiday Express - Flower and Model Train Show - [Olbrich Botanical Gardens](#), Madison, WI** - Twinkling lights, festive poinsettias, tiny landscapes, and large-scale model trains: all aboard for Olbrich's Holiday Express! Trains travel through miniature evergreen forests and colorful poinsettias as they make their way through a detailed landscape made of natural materials by Olbrich's horticulture staff. Mondays through Saturdays from 10:00 a.m. to 4:00 p.m. and Sundays from 10:00 a.m. to 5:00 p.m. Admission is \$3 for adults, \$2 for children ages 3 – 12 (OBS members free) and includes admission to the tropical Bolz Conservatory. Admission is free each Wednesday and Saturday from 10 a.m. to noon.

**Dec 19, 2008 (12:00 noon) - Pruning Shrubs for a Reason - Brown Bag Program** - contact Ext. Office for access - Proper pruning is one of the most essential of all management practices for shrubs in the home landscape. Correct pruning procedures will help keep shrubs vigorous, maintain them in proper shape and form for a desirable landscape effect, and add years to their usefulness. Pruning will help maintain natural habit of growth; remove dead, diseased or broken branches; promote flower and fruit development; encourage vigorous growth of plants with colored twigs; and improve chances of survival at transplanting time.

**Jan 30, 2009 (12:00 noon) - 2008 - Fruit Production Update: The Year In Review - Brown Bag Program** - contact Ext. Office for access - Dick Weidman, Superintendent Peninsular Agricultural Research Station will share his observations on the performance of various fruit crops during the 2006 growing season. He will also share the observed effects and impacts of the wet spring, followed by the drought of 2006 on certain fruit cultivars. The Peninsular ARS has been testing and evaluating cultivars for Wisconsin for years. Join us for an update on fruit crop performance.

**Feb 13-15, 2009 - WPT's Garden Expo - Madison, WI** - Sponsored by Wisconsin Public Television, Friends of WHA-TV, and the UW-Extension Horticulture Team, this event draws nearly 16,000 people to view 400 booths, provided by numerous exhibitors over 100,000 square-feet. The Madison Area Master Gardeners will staff their own booth. Numerous educational seminars, demonstrations, and workshops are offered on a variety of horticultural topics. Hours are Fri 4:00-9:00, Sat 8:00-6:00, and Sun 10:00-4:00. In the [Exhibition Hall, Alliant Energy Center](#). An admission fee is charged to this fundraiser to support WI Public TV programming (including The WI Gardener). For more information visit [WPT's Garden Expo website](#).

**March 7, 2009 - Spring into Gardening - La Crosse, WI** - Sponsored by Bluff Country Master Gardeners, this workshop from 9:00 a.m. to 3:00p.m. Features afternoon keynote speaker Mark Dwyer of Rotary Gardens. A choice of breakout sessions with local experts will be offered in the morning. More details will be available in January 2009. For more information contact [bluffcountrymg@yahoo.com](mailto:bluffcountrymg@yahoo.com)

# October Gardening Tips

To prolong a feeling of summer take cuttings of shade-loving flowering annuals and tender herbs to grow on a sunny window or under lights indoors this winter. Good candidates include wax begonias, impatiens, coleus, lantana, and fuchsia. Geraniums need a lot of light but can survive indoors well enough to be grown outdoors again next year. Parsley, sage, rosemary, basil, oregano, and thyme can be grown indoors, too.



Buy colorful, hardy flowering mum plants now for transplanting into beds where dead annual flowers have been or will soon be removed. Hint: plant these pot and all in the ground now; come spring remove pot and replant into the ground. Add two inches of mulch after the ground has frozen to protect them through the winter.

Now that frost has browned the foliage of non-hardy summer flowering plants such as cannas, dahlia, gladiolus, caladium, and tuberous begonia, it is time to dig and store them for their annual rest. All should be air dried before placing in a cool spot for the winter. Gladiolus are stored dry and uncovered while all others should be covered with well wrung-out peat, soil, or sand to keep them lightly moist.

Another plant that many people don't know about wintering over is Four O' Clocks. They have a tuberous root and can be dug and saved the same as a dahlia. You can plant the root in the spring and it will start growing immediately. You will get a much larger and fuller plant by this method and also it will bloom sooner than any you plant by seed.

While you're digging all of your bulbs and rhizomes, collect some seeds from your annuals to save for next year. All you need to do is dry them and store them in labeled envelopes to plant in the spring. Most any plant that produces seeds will produce viable seeds and will save you some money on your spring planting. Also you can even sow seeds of hardy annuals: cleome, pinks, candytuft, larkspur, bachelor buttons and calendula. Make sure to mark where these are planted.

After killing frost, rose bush foliage should be stripped and old leaves cleaned from bed. Shortly before ground freezes, roses should be given good deep soaking. Prune branches enough to prevent whipping around in wind or to fit under rose cones. Don't get too anxious to cover your roses. You need to wait until the ground freezes, which will probably be in December. The simplest protection is a mound of soil around the base of the plant to protect the bud union. Bring the soil in from another part of the garden (do not scrape up from the base of the plant). After you mound the soil, cover the rest of the roses with leaves or peat moss. Remember to remove the mulch in very early spring or you will cook your plant.

Prepare vegetable garden soil for early spring planting. Remove old stalks to prevent insect and disease problems next year. Spread manure and incorporate into soil. Cut back asparagus ferns and dispose to prevent insect and disease problems next year. And manure could be added at this time also and mixed in well, then mulch with straw. Plant garlic cloves, the bigger the better, 1-2 inches deep in well tilled fertile soil, 6-8 weeks before ground freezes, and mulch well only after ground freezes.



Rake up and dispose of all fallen fruit in orchard.

---

## Pumpkin Chocolate Chip Bundt Cake

submitted by Sally Spangler to be served at Oct meeting

2 1/2 cup Sugar  
1 cup Oil  
3 Eggs  
3 cups Flour  
2 tsp. Baking Soda  
1 tsp. Cinnamon  
1 tsp. Nutmeg  
1/2 tsp. Salt  
1/8 tsp. Cloves  
1 (15 oz.) Can Pumpkin  
1 cup chocolate chips



Optional: 1 cup of chopped walnuts or pecans with the chocolate chips

Preheat oven to 350 degrees. Put oven rack so the cake is in the center of the oven. Grease and flour bundt cake pan.

In a large mixing bowl blend the sugar, oil and eggs until creamy. Add the pumpkin.

In a separate bowl combine all the dry ingredients and slowly add to the pumpkin mixture until combined. Stir in chocolate chips.

Spread in bundt pan and bake approx 1 hour or until done.

Can frost with your favorite chocolate or white icing.

# 2009 JUNEAU COUNTY MASTER GARDENERS MEMBERSHIP FORM

## AREAS OF INTEREST THAT YOU WOULD LIKE TO LEARN ABOUT- Check all that Apply

<input type="checkbox"/>	<b>LANDSCAPING</b>	<input type="checkbox"/>	<b>FRUITS</b>
<input type="checkbox"/>	GROUND COVERS	<input type="checkbox"/>	SMALL FRUITS
<input type="checkbox"/>	SHRUBS & TREES	<input type="checkbox"/>	WILD FRUITS
<input type="checkbox"/>	LAWN CARE	<input type="checkbox"/>	OTHER _____
<input type="checkbox"/>	WATER GARDENING	<input type="checkbox"/>	<b>PESTS</b>
<input type="checkbox"/>	DESIGN	<input type="checkbox"/>	INSECTS
<input type="checkbox"/>	NATIVE PLANTS	<input type="checkbox"/>	WILDLIFE
<input type="checkbox"/>	GRASSES	<input type="checkbox"/>	CONTROL
<input type="checkbox"/>	VINES	<input type="checkbox"/>	PESTICIDES
<input type="checkbox"/>	<b>HOUSEPLANTS</b>	<input type="checkbox"/>	DISEASES
<input type="checkbox"/>	CACTI & SUCCULENTS	<input type="checkbox"/>	<b>FLOWERS</b>
<input type="checkbox"/>	ORCHIDS	<input type="checkbox"/>	PERENNIALS
<input type="checkbox"/>	OTHER: _____	<input type="checkbox"/>	ANNUALS
		<input type="checkbox"/>	ROSES
		<input type="checkbox"/>	WILD FLOWERS
<b>OTHER AREAS OF INTEREST</b>			
<input type="checkbox"/>	COMPOSTING	<input type="checkbox"/>	IRRIGATION SYSTEMS
<input type="checkbox"/>	GARDEN PLANNING	<input type="checkbox"/>	ORGANIC GARDENING
<input type="checkbox"/>	PHOTOGRAPHY	<input type="checkbox"/>	VEGETABLES
<input type="checkbox"/>	PRUNING	<input type="checkbox"/>	SEED STARTING
<input type="checkbox"/>	HERBS	<input type="checkbox"/>	CONTAINER GARDENING

- ❖ If you would like to host a garden tour list two months of your choice: \_\_\_\_\_
- ❖ If you are a current Master Gardener List the year you took your training: \_\_\_\_\_
- ❖ If not, would you like information on becoming a Master Gardener? \_\_\_\_\_

NAME \_\_\_\_\_

ADDRESS \_\_\_\_\_

CITY \_\_\_\_\_

STATE \_\_\_\_\_ ZIP \_\_\_\_\_

PHONE (     ) \_\_\_\_\_

E-MAIL \_\_\_\_\_

ANNUAL DUES: **\$12.00** from January thru December 2009  
 CHECK PAYABLE TO: **Juneau County Master Gardeners**  
 MAIL THIS FORM AND CHECK TO:  
 Irene Klingemann, W5805 Brown Rd, Mauston WI 53948

Send articles and other ideas for the Master Gardeners Newsletter to:  
 Irene Klingemann  
 W5805 Brown Rd  
 Mauston WI 53948  
 Or email – note new address  
[klingermstn@wildblue.net](mailto:klingermstn@wildblue.net)

### *Request from Rich Milgrom*

*Please save pop-tops from cans for Rich. His camping group, The Jack Pine Travelers and most of the rest of the Good Sam Organization are saving them for the Ronald McDonald House. Each pop-top is worth one minute of dialysis for a child.*

*They can be brought to any regular meeting.*

*Thanks  
 Rich*



### *A Seasonal Poem*

### *They All Fall Down*



*Wasn't it just yesterday  
 I passed under your blooming branches  
 inhaled your sweet fragrance  
 watched white blossoms spill  
 as you lay a lace tablecloth  
 on green grass*

*Today you toss gold coins  
 into autumn's chill  
 the wind rushes by  
 to sweep your gilded bronze into piles  
 for children  
 who come leaping*

*by poet, Janet Leahy, from New Berlin  
 submitted by Lincoln Hartford*



Cooperative Extension  
Juneau County UW-Extension  
211 Hickory Street  
Mauston WI 53948

An EEO/Affirmative Action employer, University of Wisconsin-Extension provides equal Opportunities in employment and programming, including Title IX and ADA requirements.



## REMINDERS

- ✧ If you have not done so, don't forget to send your Master Gardener Volunteer Hours in to Jan Brendle, N8420 19th Ave, Necedah WI 54646 or [janbrendle@tds.net](mailto:janbrendle@tds.net) or call 608-565-7290 as soon as possible.
- ✧ October meeting will be at the Boorman House with a tour of the grounds and the building
- ✧ Also it is time for filling out your JCMG membership form for 2009 (see page 7) and bring it along with \$12.00 to the October meeting.
- ✧ **Note** that for Certified JCMG members, \$5.00 of this goes towards membership in WIMGA and the WIMGA newsletter. Remember, there is a promotion to go electronic and receive the newsletter by e-mail to save on time, cost, postage, and paper.....**and most importantly save a tree.**
- ✧ Those who ordered a Wisconsin Garden Journal for 2009, they will be available at the meeting. The cost is \$13.00 this year.
- ✧ The October meeting will be the last meeting of year - next meeting will be in April of 2009
- ✧ Those interested in Master Gardener Training, classes will be in Adams County for 2009. Please contact Don Genrich, Agriculture Agent, Adams County Extension Office, 608-339-4237 for more information and to verify dates and to register.