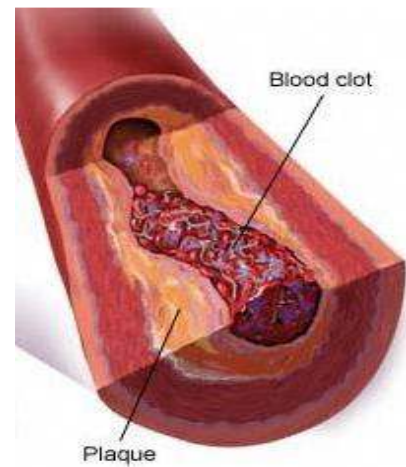


# L BUNCH

# N

# C

# H



**Monday, February 12, 2007**

Noon – 1:00 P.M.

Lafayette County Board Room  
Courthouse, Darlington

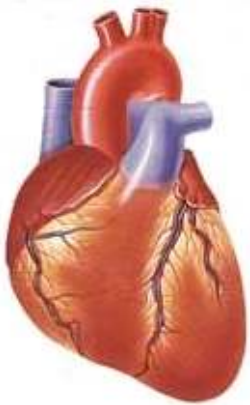
## Cholesterol

*Presenter: Matthew Solverson, MD*

Medical Associates

731 Clay Street

Darlington, WI 53530



**Join us as Dr. Solverson discusses the facts  
and answers your questions about cholesterol.**

- ★ Is cholesterol something I should be concerned about?
- ★ What is the difference between good and bad cholesterol?
- ★ Is high cholesterol a common problem for both men and women?

**The public is invited to Lunch Bunch.** You may bring your lunch, but you don't have to. The sessions are free, informal, and informative.

An EEO/Affirmative Action employer, University of Wisconsin-Extension provides equal opportunities in employment and programming including Title IX and ADA requirements. Requests for reasonable accommodations for disabilities or limitations should be made prior to the date of the program by contacting the Lafayette County UW-Extension Office at 608-776-4820. Please do so as soon as possible so that proper arrangements can be made.

**This program is sponsored in part by Lafayette County Home  
and Community Education and free-will donations.**

