

Oconto County 4-H

As you work on your project throughout the year, you may find it helpful to take pictures and keep notes. They can come in handy as you plan for ways to share what you have learned and look back on what you've done.

Suggestions for showcasing your project work:

- Tell about what you've learned at **Speaking Fest**
- Show what you've learned at **Demonstration Fest**
- Take your project to the **Oconto County Fair**
- Enter local contests **outside of 4-H** like essay contests, shows and speech contests
- Look for creative ways to share what you've learned with your **club**, your **school** and your **community**

Stay in Touch!

UW-Extension Office
301 Washington Street
Oconto, WI 54153

Paula Huff, 4-H Agent
Abby Huibregtse, Agriculture Agent
920/834-6852

www.uwex.edu/CES/cty/oconto

*This Project Guide was prepared by Abby Huibregtse
University of Wisconsin—Extension February 2009*

Developed by Oconto County 4-H Project Development Committee

Format by Johnathan M. Kruse

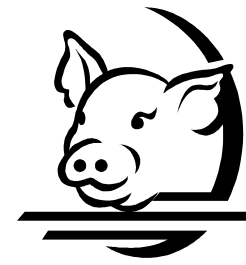
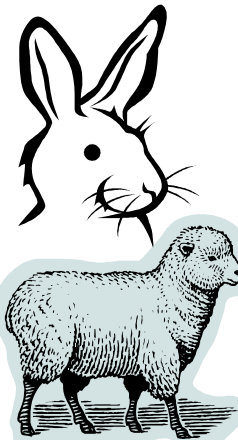
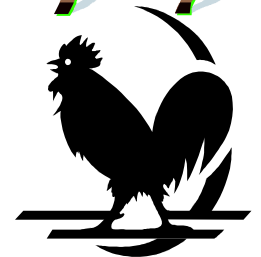
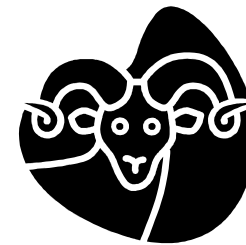
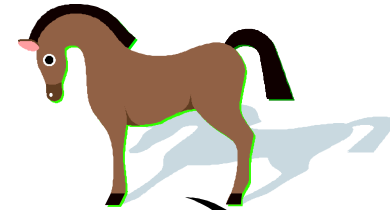


University of Wisconsin, U.S. Department of Agriculture and Wisconsin counties cooperating. An EEO/AA employer, University of Wisconsin Extension provides equal opportunities in employment and programming, including Title IX and American with Disabilities (ADA) requirements. La Universidad de Wisconsin-Extensión, un empleador con igualdad de oportunidades y acción afirmativa (EEO/AA), proporciona igualdad de oportunidades en empleo y programas, incluyendo los requisitos del Título IX (Title IX) y de la Ley para Americanos con Discapacidades (ADA).

WELCOME TO THE OCONTO COUNTY 4-H

ANIMAL

PROJECTS!



Animal projects are a way for youth to become more involved in agriculture. The agriculture industry generates \$51 billion in Wisconsin each year. Your involvement in agriculture today may lead you to many exciting opportunities and potential careers in the future. Get ready to learn and have some fun!

Learning and Life Development through Animal Projects



We're happy you've decided to join one of the animal projects! Whether you are into horses, dairy, beef, sheep, swine, goats, poultry, or rabbits, there is a lot to be learned from raising animals and exhibiting them at the fair. These projects are definitely a year-long learning experience. Because of the hard work and dedication it takes to do an animal project, one way we reward our animal exhibitors is by giving them the opportunity to sell an animal in the Sale of Champions.

What is the Sale of Champions?

The Sale of Champions is an opportunity for youth who have placed at or near the top of their classes to sell their animals during this special auction. It is held on Sunday during the Oconto County Youth Fair.

There are certain requirements for each project, and you must check with project leaders to be sure you are fulfilling your duties as an animal exhibitor. However, there are certain expectations of all animal youth that must be completed in order to be eligible for the Sale of Champions. This guide highlights some of the requirements, but it won't have all the answers, so please ask a lot of questions!

This handbook is not meant to be all inclusive. The bottom line is that you COMMUNICATE with project leaders and fellow showman; that you READ the 4-H newsletter and any informational pieces that come in the mail; and that you ASK questions when things seem confusing. Contact the UW-Extension Office, a Fair Board Member, Project Leaders, or the Animal Project Committee if you need help!

4-H Adult Project Leaders

Beef: Kathy Kasten- 920/855-2940

Julie Yonker- 920/855-6041

Dairy: Andy Wolf- 920/373-4421

Goats: Carol Nelson- 920/855-2873

Heather Rudie- 920/598-0048

Horse: Cory Schardt- 920/590-1397

Swine: Richard Fetterly- 920/897-2217

Poultry: Kris Kellogg- 715/745-4547

Sheep: Crystal Retzlaff- 920/848-4467

Rabbits: Anne Renel- 920/848-2023

Or call the UW-Extension office at 920/834-6852 and we can guide you in the right direction!

County Fair

So now it's August and time for the County Fair! Once you've completed all of your prior requirements, it's time to focus on exhibiting your animals. Remember, you need to show TWO animals of a specific species (two sheep, two dairy animals, two rabbits) in order to be eligible to sell in that species. All youth MUST participate in showmanship as well. There are specific requirements (weight gain, for example) for every species, so please check the Premium Book.

Once the shows are all over, the highest ranking animals will be eligible for the Sale of Champions. The number and type of projects eligible for the Sale varies by species. It is a competitive process, and not every one gets to sell. If you do get to sell, you will take your animal into the auction ring on Sunday of the Fair to be bid on. All sellers must be present for Sale set up and fair clean up the Monday after the Fair. If not, an additional 2% of your Sale profits will be deducted.

If your animal is not selected this year, don't be disappointed. There is so much more to these projects than just selling your animal in the Sale of Champions. We hope that you enjoy animals and being a part of agriculture, and will want to participate again next year!

Enrollment

The first step in starting your animal project is to enroll! Enrollment forms are distributed to 4-H Clubs in the fall. Enrollment forms are due to the UW-Extension office by November 15, but they must be turned into your 4-H club first. Please check with your 4-H club leader for any special club deadlines. It is very important that you turn your enrollments in, because if you are not enrolled, you will not receive the 4-H Newsletter or any postcards in the mail relating to your projects.

FFA and Boy Scout/Girl Scout members- FFA Advisors and Scout Leaders will receive enrollment information in the winter. Please let your advisor know if you plan to show at the county fair next year, so they can get you the correct information. The sooner you turn in your enrollments, the sooner you will receive information about project meetings and other important dates. Each FFA Advisor also receives the 4-H newsletter, so please read that copy or check it out on the UW-Extension website- many opportunities for youth are listed in the newsletter!

County Fair Weigh-ins

All market beef, sheep, and swine must be weighed-in. The weigh-ins are held on a Saturday in the spring.

Beef- March

Sheep & Swine- May

Please watch the newsletter for specific dates!

Each youth can weigh-in four animals. You can only show two market animals of any given species at the fair, but we highly encourage you to weigh-in at least one extra animal per exhibitor. In case something would happen to one of your animals, you would still have a back-up! To be eligible to sell in the Sale of Champions, a youth must exhibit TWO animals- either two market animals, or one market animal and some breeding stock. It's a good idea to have an extra animal or two, in case something would go wrong!

All weighed-in animals will be identified by ear tags. If one of these tags falls out, please contact the UW-Extension office to have it replaced. These animals will be weighed-in again, at County Fair Check-in, and they need to have the correct ear tag identification in place.

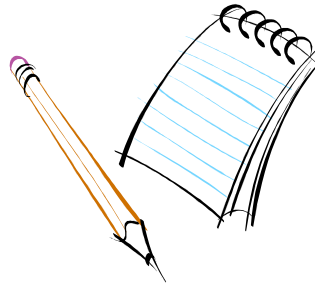
Sale of Champions Buyers

We are lucky to have businesses and individuals in our community that come to the County Fair each year and purchase animals in the Sale of Champions. It is their generous support that helps us reward the hard work of our youth. Another step in the fair preparation process is to invite buyers to the Sale of Champions. This is not required, but many youth will invite potential buyers to the Sale of Champions. These buyers are usually people who know your family. They may be your feed mill, milk hauler, trucker, dentist, eye doctor, neighbor... anyone who might be interested in supporting you and Oconto County youth projects. How you invite them is up to you. Some exhibitors will write letters, some will do face to face visits. The goal is to explain to them who you are, what your project is, what the Sale of Champions is, and so on. Most importantly, be polite!!



Paperwork

Each animal project has specific paperwork that must be completed and turned in before the youth can show their animals at the fair. Most of this paperwork is turned in at Fair Check-in Day. Beef, sheep, and swine exhibitors will receive their paperwork at the initial weigh-in. Other projects will receive it in the mail. FFA exhibitors will get it through their FFA Advisor. Copies can also be downloaded from the UW-Extension/4-H website.



Some of the required paperwork:

- Performance Reports (beef, sheep, swine, goats, poultry, rabbits)
- Some form of record keeping- record book pages, FFA proficiency, etc. (dairy cattle and dairy goats)
- Certification of educational points (all)
- Drug History Form (all)

Contact project leaders or the UW-Extension office with questions!

Meat Animal Quality Assurance (MAQA)

All youth exhibiting beef, sheep, swine, and meat goats must go through Meat Animal Quality Assurance Training (MAQA). **In order to be eligible to sell in the Sale of Champions, all livestock exhibitors must be MAQA certified!**

Years ago, the swine industry required that youth (and adult) pork producers be trained in producing high quality meat products. Swine exhibitors have been required to attend Pork Quality Assurance Trainings since the 90's. Many Wisconsin counties, including Oconto, have decided to encourage quality meat animal production of all our animal exhibitors. In the future, all meat processors may require animal producers to be trained in meat quality assurance. We are ahead of the game by educating our youth.

MAQA trainings will be held several times at various locations around the county in the spring. The trainings are one and a half hours long, and youth must be in attendance for the entire meeting. If you cannot attend any of the Oconto County trainings, you can be certified in another county. Be sure to look for these dates in the 4-H newsletter, listen for them in the Club Reminders, ask your FFA Advisor, or call the UW-Extension office. If you are not certified, you will not be eligible to sell!

Educational Points

The County Fair is the showcase event for animal project exhibitors. However, participating in these projects means a lot more than four days at county fair. It means that you are continuously learning more about exhibiting your show animals, raising animals, and agriculture. All 4-H, FFA, and Boy Scout/ Girl Scout members showing animal projects at the County Fair are required to participate in three educational opportunities. **In order to be eligible to sell in the Sale of Champions, you must earn at least three (different) educational points per year.** At least one of these points must pertain directly to your project (for example, a rabbit exhibitor must attend at least one rabbit project meeting, swap meet, or show for one of their educational points)

Below are examples of acceptable educational activities that youth could participate in:

- Attend, teach or demonstrate at club, chapter or county fitting and showing workshop
- Participate in UW-Extension or industry sponsored workshops, seminars or other programs on livestock:
- Meat Animal Quality Assurance Training (MAQA)
- County livestock, dairy, or equine judging team practice and 4-H judging contest at Area Animal Science Day
- 4-H State Meat Evaluation Contest
- FFA judging team-participate in practices and a contest
- Show livestock at Northeast Jr. Livestock Show or WLBA Spring Preview Show
- Show dairy cattle, livestock, poultry, or rabbits at Wisconsin State Fair, district or state breed shows
- Show horses or volunteer at the NE District 4-H Horse Association Open Show
- Attend rabbit and/or poultry swap meet

- Satisfactorily complete one semester of a high school agriculture education course on livestock, dairy or small animal production with a grade of C or better.
- Have daily responsibilities for care of dairy, livestock or small animals at home or on employer's farm

Educational points can be earned in many different ways. For most animal exhibitors, this won't be difficult at all since they are already participating in many activities that relate to their projects.

Fair Entry Blanks

In order to exhibit any projects at the Oconto County Fair, you need to sign up the specific projects you want to take. Watch for the Premium Book to be ready sometime in the spring. This is created by the Fair Board and will be distributed to 4-H Club leaders when it is ready. You can also find copies at the local libraries or online on the Oconto County UW-Extension website.

The County Fair Entry blanks are due sometime the last week of June.

The Premium Book is full of information. It contains all the requirements specific to the fair, regarding animal health, youth requirements, and check-in times, to name a few. Be sure to read through the Premium Book as soon as possible, so that you don't miss any important requirements or deadlines!