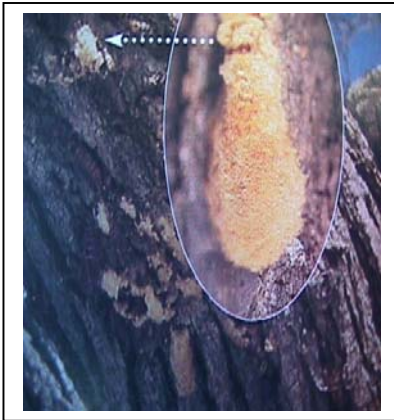


Gypsy Moth Egg Mass Recognition & Removal



Larva hatching from an egg mass
Egg masses on the under side of host tree's branch
in early to mid May.

The yellow colored and felt textured egg masses are produced by the white female moths in July. They contain on the average, 500 eggs. Most of these egg masses will be located on the under side of the lowest branches. Some will be higher and many will be under hickory bark and in stored woodpiles. Also look under your car. That is how the Gypsy Moth probably got to your in the first place.



After the Gypsy moth egg masses appear in is important to eliminate them. The most efficient and effect means is to spray them with a soy oil- detergent mix. In the garden shop of most hardware stores you can purchase the product called Golden Nature Spray oil (for gypsy moth egg mass removal). It is mixed with water (50/50) and sprayed directly on the egg mass. Not all the egg masses can be reached but the more sprayed with the oil the less of a problem the Gypsy Moth caterpillar will be next year. The oil can be home prepared using a soy cooking oil with 7% dish soap. Mix this blend with one part water and one part of this preparation. You can use this oil product on the egg mass from the time they appear in July through the time they hatch in May.



David Bayer, Seasonal Horticulture
UW-Extension, Outagamie County
3365 W Brewster St., Appleton, WI 54914

Telephone: (920) 832-5119
e-mail: david.bayer@ces.uwex.edu
Web Site: www.co.outagamie.wi.us/uwex
Publications Web Site: http://cecommerce.uwex.edu

An AA/EEO employer, UW-Extension provides equal opportunities in employment and programming, including Title IX and ADA requirements.
© Copyright 2004 by Board of Regents of the University of Wisconsin Systems.

