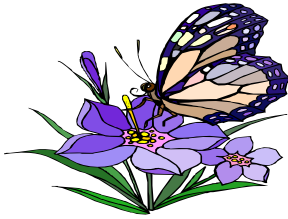


# WHAT'S COMING UP?

Volume 1

January 2009

The Newsletter of the Polk County MG Association



In this Issue:	
PCMG Meeting Minutes	1
Volunteer Opportunities	4
November Tasks	5

## **PCMGA JANUARY 2009 Meeting Minutes**

The January meeting of the Polk County Master Gardeners Association was held at the Polk County Justice Center(new location). The meeting was called to order at 6:50PM by President Fritz Coulter.

The October meeting minutes were not read .

### **Treasurers report:**

Welcome to new treasurer Jim West and thank you Jackie Whitcomb for excellent years of service. Bank has a balance of \$1356.14 due to check still not cashed from Share the Bounty, Sportmans Club & the garden journal shipment. Fritz had mailed garden journal check after receiving shipment since 1<sup>st</sup> shipment of journals lost. Our balance should be \$951.00 after outstanding checks deducted. All dues sent January 9<sup>th</sup> to WIGMA.

## **OLD BUSINESS**

Master Gardening class to begin with 12-15 people signed up. 2 couples are signed so they are being allowed 1 fee per couple but WIGMA dues are being charged for both, total cost is \$120.00.

Class will begin continuously from Tuesday, February 3<sup>rd</sup> through April 21<sup>st</sup>, 2009.

Volunteers needed to help run the classes, take attendance for entire schedule. Classes will run from 6:00PM to 9:00 PM at the Polk County Government Center-West Conference room(our old meeting room). All students will sit together at tables instead of back room in chairs for ease of listening to material & lecturer, PowerPoint presentation will be given. If you can help run classes please contact Fritz Coulter with dates. Fritz & Ryan Sterry will be available for Feb. 3<sup>rd</sup> session. Fritz will have directions & procedure for running the Powerpoint on computer so should have no difficulty. Volunteer time can be used either as education or volunteer hours. April 7<sup>th</sup> class will have a live speaker but help still needed to help students & pass out material.

**April 7<sup>th</sup> will be live speaker from Spooner Agriculture Research Center on soil.**

Sportsman Show in April-small discussion was held as to whether the show will be scheduled. Sounds like some items listed on Craigs list for bidding so will follow up with Ron to see what is happening. Check for our space for 2009 has not been cashed.

Polk County Fair-Discussion was held as to no longer having the weed contest. We would like gardeners to grow something new. Past suggestions were unique items made with vegetables or fruits. Another suggestion was how to use Herbs: possibly teas? We are still looking for suggestions so put thinking caps on for next meeting so we can decide in plenty of time to let fairgoers know.

### **PROJECTS:**

No new projects asked for this year & we will continue to monitor Good Samaritan gardens in St. Croix Falls, Golden Age Manor in Amery & Garfield Park. We also will try to plan and plant gardens at the Polk County Fairgrounds this year around buildings we use.

Mothers Day plant sale at Wanderoos Pancake breakfast. We hopefully will have warmer weather for the sale. Please bring any plants started or divided well marked for sale. Sale runs from 8:00am-12:00 NOON Sunday, May 10<sup>th</sup>.

### **NEW BUSINESS**

We welcomed a new person to our group who visited our meeting. Nan Reigel joined us and has transplanted here from Colorado. She suggested the possible use of herbs for fair. Nan expressed interest in checking out the Master Gardening program and will be a welcome addition to our group.

Garden U will be held Saturday, March 21, 2009 at the Valley House in Hudson, Wi.

Seminars are: Take Two Brussels Sprouts -9:15

Landscaping with Native Plants-10:45

Lunch-12:00 provided by Valley House

The truth about Organic Gardening-1:30

Vendor booths will be available. \$30 fee payable to SCVMGA-Barrette

1358 County Rd V

Houlton, WI 54082

Call 715-549-6438 or contact [StCroixvlymegg@pressenter.com](mailto:StCroixvlymegg@pressenter.com)

Wisconsin Regional Lily Society will have a couple functions going on. Saturday, February 14<sup>th</sup> a bus trip will be leaving to attend the Wisconsin Public Television Garden Expo at the Alliant Energy Center, Madison, WI from 9-6PM.

If interested contact Gloria Schley-1115 Barland Street, Eau Claire, Wi 54701 715-456-0947 or [Glo.schley7@charter.net](mailto:Glo.schley7@charter.net) to possibly ride the bus with Eau Claire Master Gardening group. Tickets for expo are \$6 ahead of time or \$7 at the door. Charge for bus is \$25 I believe but contact Gloria for sure, 1<sup>st</sup> come 1<sup>st</sup> serve.

Information regarding the expo can be found at:

<http://www.wpt.org/gardenexpo/index.cfm>.

Wisconsin Regional Lily Society will also be having their annual lily sale & spring education on April 4, 2009 from 9-4PM at the L.E. Phillips Senior Center.

You can also contact the Regional Lily Society website at [www.wrls.org](http://www.wrls.org)

National Lily Society website at [www.lilies.org](http://www.lilies.org)  
for more information regarding activities.

Sally will contact George Matz-Balsam Lake who sells fruit trees and strawberries about coming to speak about fruit crops for our March class.

### **DEMONSTRATION:**

Fritz gave us a demonstration of Tomato Diseases.

Fungal diseases are Fruit Anthranose, Fusarium Wilt, Verticillium Wilt, Early Blight, Late Blight, Septoria Leaf Blight & Soil Rot of Fruit.

Bacterial: Bacterial Spot & Bacterial Speck

Viral: Cucumber Mosaic Virus

Most diseases are spread through the soil & wind and many are transmitted from infected tools such as tomato cages & garden tools. Always make sure to wash cages with a bleach solution of 1-10 solution of bleach & water. Aphids can also spread diseases in our plants.

Make sure you rotate crops and many plants in the same category can spread diseases from year to year. Tomatoes, Peppers & potatoes are all in the same group so rotate, rotate & rotate. Diseases can last 1-4 years in your soil.

Soil borne diseases invade the vascular tissue such as fruit anthranose & fusarium wilt. Plants are generally infected through the roots so its important to not disturb your roots while transplanting & weeding. If starting your own plants transplant seedlings to large container & don't break up roots. If transplanting in your garden to let plants sit 1 hour or so after removing from container so roots that are disturbed can reseal themselves.

Leaf Spot-is caused by humid weather and wet as many of these diseases. Always make sure you water from underneath and try not to splash water on plant. Soaker hoses work well and use lots of mulch. Mulch can be straw, grass clippings & newspaper & leaves. We cannot emphasize enough how important mulch is in preventing soil borne diseases.

Soil Rot –has a circular pattern on fruit and its highly suggested to not leave fruit on the ground.

Remove all infected branches from underneath and try to keep plants trimmed for good air circulation. Fungicide sprays can work and are suggested weekly until harvest to help reduce spread of disease. Copper is also recommended but follow directions and is beneficial as a spray-it is suggested to use along with fungicides. **Always read labels carefully for application & amounts.**

**NEXT MEETING Monday, February 16<sup>th</sup> at 6:45 PM at Polk County Justice Center in the Community Room. Community Room is to the right of main entrance of facility.**



## Club Volunteer Opportunities.

Amy Klein from St. Croix Falls Parks and Recreation Committee is in the process of reviewing their planting schedule and volunteer opportunity list for 2009. If anyone is interested in helping out please contact Amy at [kevmy@centurytel.net](mailto:kevmy@centurytel.net).

### **POLK COUNTY MASTER GARDNER CLASS**

We will be hosting a Master Gardener class starting Feb. 3. We will need someone from our group to facilitate the class each evening. The class is on Tuesday evenings from 6-9PM and the class will be held at the Government Center in the west conference room. Allow yourself time to set up the conference phone and any power point presentations. Directions on how to set up the conference call and power point will be provided. At this time we have commitments for the following dates of the class.

Feb 3 Vegetable Crops - Jim West

Feb 10 Turf Management - Fritz Coulter

Feb 17 Plant Pathology - Open

Feb 24 Backyard Wildlife - Maggie Swinotek and Deb Peterson

March 3 Weeds and Pest Management - Open

March 10 Entomology - Open

March 17 Fruit Crops - Maggie Swinotek and Deb Peterson

March 24 Using Native Plants and Invasive Plants - Open

March 31 Woody Landscape Plants - Maggie Swinotek and Deb Peterson

April 7 Soil and Fertility - Open

April 14th Plant Propagation - Open

April 21st Herbaceous Annuals and Perennials - Open

If you can facilitate any of the Open classes let me know.

Fritz

[fritz2@amerytel.net](mailto:fritz2@amerytel.net)

268-4896

**If you are looking for volunteer opportunities think about hitting one of the project gardens we have done and do a little weeding this next spring. If you don't know where they are, send a quick email and we will let you know. A couple to remember: Golden Age Manor in Amery, the Polk County Fair Grounds, the Polk County Government Center and Garfield Park on Lake Wapo.**

If you have any ideas for projects send them to us or bring to a meeting.

Remember a large part of our goal as a group is doing community projects and volunteering. This can be anything from actually working a garden, giving a demonstration, working with young people on garden and growing ideas or serving as an officer or chairing a committee.

