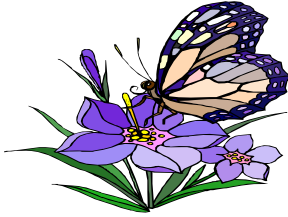


# WHAT'S COMING UP?

Volume 1

January 2008

The Newsletter of the Polk County MG Association



In this Issue:	
PCMG Meeting Minutes	1
2008 Speakers	4
2008 Committees/Ideas	5
Volunteer Opportunities	7

## PCMG Meeting Minutes- January 15, 2008

The January meeting of the Polk County Master Gardeners Association was held at the Polk County Government Center. The meeting was called to order at 6:45 by President Fritz Coulter.

The November minutes were not read at this meeting.

**Treasurers report:** We have a January balance of \$1,178.41 from dues Jackie had deposited.

### OLD BUSINESS

Emails-Fritz passed around the clipboard with all names, email addresses and phone numbers he had available for current master gardeners. This list will make it easier for us to connect with one another and also make it possible to received the WIGMA monthly mailings via email instead of being mailed out through postal service. We were asked to make any corrections needed on the list.

Fair Book will be available in February and again Fritz hopes many of us will make an entry during the fair for judging.

Longest, Tallest, Biggest weed contest will again be held. Fritz has done an ad for the fair book and will get it to Ryan. The entries will again be displayed at the Master Gardeners booth with up to 2 weeds per entry.

Sportsman Show will be held April 26<sup>th</sup> & 27<sup>th</sup> at the Polk County fairgrounds. Ron Hermanson has a meeting next week. Registration for our group has been paid. We are placed in the 1<sup>st</sup> building by the grandstand-last year we were on the East side of Homeshow #1.

Ron will try to get us back to our original location from 2 years ago.

Julie is in charge of agenda and will try to figure out what demonstrations we as master gardeners can provide. She suggested possibly showing pumpkin seeds in different stages of growth and letting the kids plant their own pumpkins to take home.

Todd will try to get us a computer for a Power Point program to run and maybe display our project photos during the show.

## **NEW BUSINESS**

Cricket LaFond-Clear Lake librarian came to speak to us regarding her upcoming exhibit through the Smithsonian Museum called "Between Fences". It will be in Clear Lake from April 12<sup>th</sup> through May 24<sup>th</sup>. A quilt show and Oklahoma will also be presented tying in with the exhibit at the Clear Lake Community Center. Cricket expects a few thousand people to attend and this exhibit is about bringing the community together and connecting both the visible and invisible barriers present in communities. Exhibition will be set up in 6 separate kiosks.

Tour guides, host and hostesses are also needed Tuesday through Sunday. Brochures on the activities will be available and Cricket will get some to Fritz. Information also available on [MUSEUMON MAINSTREET.org](http://MUSEUMONMAINSTREET.org)  
[CLEARLAKELIBRARY.org](http://CLEARLAKELIBRARY.org)

The community gardens are located in Clear Lake and through this exhibition the Polk County Master Gardeners hope to tie in gardening and food. Gardens are the lifeline of the hungry.

Fritz would like to have a couple programs at the Clear Lake Library to tie in with the exhibit, February 23<sup>rd</sup> and April 19<sup>th</sup>. Possible subjects for February could be soil and preparation and how soil can be amended. We could also possibly do a seed starting demonstration 40 minutes would be given to anyone who wants to help with demonstrations for a total of 2 hours. In April we could work with perennial planting. Additional subjects that could be pursued are planting with heirloom seeds, trellises to use in our gardens and what is best to use. Possibly use & recommend heirloom tomatoes and squash seeds.

The Community Garden is usually planted Memorial Day and if we use Heirloom seeds with perennials and vegetables it can all be tied into the exhibit.

### Projects:

Fairgrounds-working on the gardens by the judging building, flower gardens on Southeast and Northeast sides.

Planting in St. Croix Falls will most likely be 3<sup>rd</sup> Saturday of May.

### GUEST SPEAKER:

We had Justin Swanson from St. Croix Floral speak to us regarding trimming of shrubs and trees.

Justin showed us the Felco pruners he uses in his pruning jobs and explained the differences in each and when he switches to the larger tool for pruning. He emphasized how important it is to always keep our pruners clean,sterilized and greased to help keep them in tip top shape. Pruners will last us for years if maintained. Use a solution of 9-1 bleach solution to sterilize our pruners.

## 3 MOST POPULAR TOOLS

Bypass Pruners #2-24-favored, cleaner cut ergonomic, can buy parts, sharpen & take apart & fix. Can use for branches as large as ¾". Felco #6 is the smallest.

Felco Lopping Shears #21-use for 1-1 ¼" branch for larger branches of trees.

Folding pruning saw-pole type –easy cuts, early pruning.

Pole pruners for height on trees-not used too much.

Pruning is usually done in late winter, very early spring on most of our trees to prevent damage to trees and the running of sap which can leave open areas for disease & insects to enter.

Newly planted apple trees can benefit from pruning –head it back to stimulate new growth . Can cut 36" for routine spring cut (March/early April).

Remove ¼ of tree to open circulation, shape and remove larger older branches.

Tree wrap –uses plastic corrugated in foil taken off in spring as it doesn't breathe. Paper wrap can be used all year round-and stay on trees for 3-4 years.

Deer eat arborvitae and small fruit trees. Make sure you keep barriers around them to protect if possible.

Most evergreens don't always need pruning.

Pines: New growth late spring and candle elongated to control height-remove ½-2/3 of candle. Growth comes in pine trees from last years buds. Height control will be what your looking at for pruning.

Yews can be pruned severely –as long as green they will grow back.

Arborvitae-like a tall shrub. If dormant early winter-when maples start sap running – evergreens can be pruned too. You can also prune June through fall.

Birch trees can be transplanted late fall when dormant. Trees can be bareroot and very small for best success.

**Next Meeting Monday, February 25<sup>th</sup>** as conflicts arose for the normal date of February 19<sup>th</sup>.



## SPEAKERS FOR 2008

February  
March

Tom Martell from Martell Vineyards will be discussing cold weather grapes  
We will have a field trip to Glenna Farms just up Hwy 8 for a talk on maple syrup



## **2008 COMMITTEES**

### **MEMBERSHIP:**

This committee will work to encourage new members to join the group and become active members of the group. This could entail mentoring new members.

---

### **GROUP FUNDRAISER:**

This committee will work on developing fund raisers for the group and coordinating the implementation of the fundraiser.

Maggie Swiontek

Debbie Peterson

Sally Pickard

### **COMMUNITY EDUCATION PROGRAMS:**

This committee will work to develop educational programs and speaking engagements in the community. These may be through the schools, 4H groups, youth groups, senior citizen groups, community education, etc.

---

### **VOLUNTEER PROJECTS:**

This committee will work to coordinate the volunteer projects that the group will take on for the year. They will be responsible for collecting requests, getting the information out to the members and coordinating the volunteers for the projects.

Todd Demers

Jim West

### **POLK COUNTY FAIR:**

This committee will coordinate the display and the workers for the booth at the Polk County Fair.

Bonnie Corcoran

Ann Ringlien

Todd Demers

### **SPORTSMAN SHOW:**

This committee will coordinate the display and workers for the Sportsman Show.

Julie Kuehl (Chair)

Maggie Swiontek

Jackie Whitcomb

Ann Ringlien

### **COUNTY HELPLINE:**

This committee will help Ryan's office with answering questions that come in on the helpline.

Paula Kramer (Chair)

Amy Muryn

### **MASTER GARDENER TRAINING PROGRAM:**

This committee will help coordinate the MG training program.

Paula Kramer

Amy Muryn

**ADVERTISING:**

This committee is in charge of getting information out to media for events.

Jackie Whitcomb \_\_\_\_\_

**Other possible ideas:**

EARTH DAY AT RECYCLING CENTER

\_\_\_\_\_

ARBOR DAY PROGRAM

Jim West \_\_\_\_\_

FIELD TRIPS (In addition to the monthly meeting speakers)

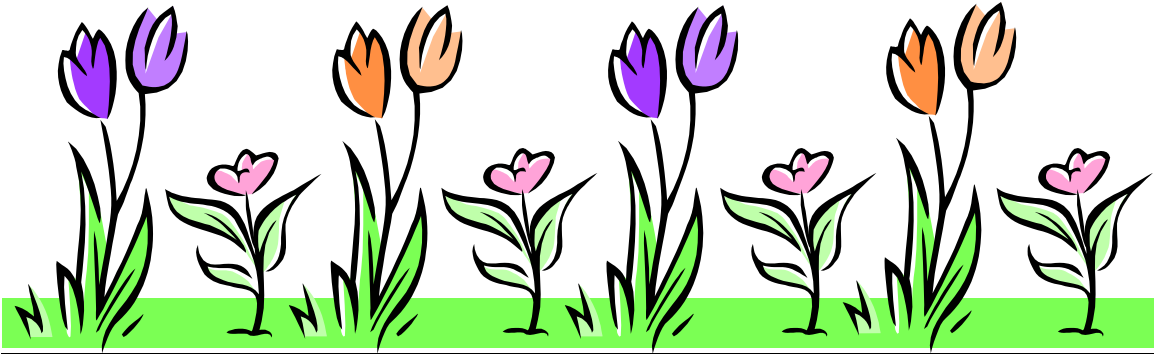
Ann Ringlien \_\_\_\_\_

\_\_\_\_\_ Arboretum/Conservatory



THERE IS STILL PLENTY OF ROOM FOR ADDITIONAL HELP ON COMMITTEES. THIS GROUP IS ONLY AS GOOD AS ITS VOLUNTEERS.

## Club Volunteer Opportunities.



**THIS PAGE IS WAITING FOR THE  
SUMMER PROJECTS.**

Fritz has scheduled a gardening seminar at Clear Lake Library for **Saturday Feb. 23 from 9-11 AM**. The seminar will be on soil, planting from seed, tomatoes and their diseases, and mistakes we make as gardener's. If you are interested in helping with this seminar let Fritz know.



Upcoming education opportunities.  
**Garden U March 15th 9-3**, more info in Sprinklings news letter.

We will be having two guest speakers at our next business meeting. Andrea Seifert from Polk County Share the Bounty will be there about the program of giving out seeds to people who in turn donate 1/2 of what they grow back to the WIC program at the county. Tanjia Gehrman of the Polk County Adult Development Center has a volunteer opportunity that she will talk about.