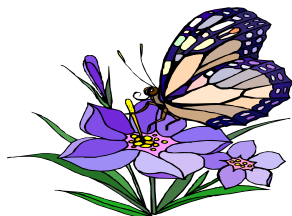


WHAT'S COMING UP?

Volume2

March 2008

The Newsletter of the Polk County MG Association



| | |
|-------------------------|---|
| In this Issue: | |
| PCMG Meeting Minutes | 1 |
| 2008 Speakers | 3 |
| 2008 Committees/Ideas | 4 |
| Volunteer Opportunities | 6 |

PCMGA March 18, 2008 Meeting Minutes

The March 18, 2008 Polk County Master Gardener meeting was held at Glenna Farms. The informational part of the meeting was first, with the business meeting held later. The meeting was called to order by President Fritz Coulter.

No corrections were made to the February minutes.

Jackie Whitcomb read the Treasurer's report. The current balance in the checkbook is \$948.

At our next meeting on April 15 we will plan for the Sportsman Show on April 26 and 27, the plant sale at Wanderoos on May 11, and other projects.

Fritz will be giving another presentation at the Clear Lake Library on April 19.

Andrea Seifert sent a thank you note for our contribution to the Share the Bounty program.

Wal-Mart called the County Extension to see if any Master Gardeners wanted to answer questions in their garden department. Ryan Sterry checked with Madison and that would qualify for volunteer hours so long as people identify themselves as Master Gardeners and don't promote the store.

Barron County's Garden U will be on April 5 in Cameron, 8:30 to 4:00. On April 14 at 6:00 PM there will be a fruit grafting workshop in Luck. In May Rob Bursick from Dragonfly Gardens will be presenting some gardening classes through Community Ed.

Information From the Maple Syrup Tour

The same woods at Glenna Farms has been tapped for maple syrup for over 100 years. Sugar Maples in the woods generally take about 20 years to reach a diameter of 12 inches, the minimum for tapping, and generally live 40 to 50 years. There can be one tap for every 12 inches of diameter. The season generally lasts 4-6 weeks. Tapping 3,000

trees, Glenna Farms generally produces 750 to 1,000 gallons of maple syrup. Each tap produces 1 to 2 quarts of syrup.

The tap currently used is 5/16"; they used to be 9/16", but research at Cornell University demonstrated that the smaller taps produce as much syrup and are less stressful for the trees. Since the sap flow is affected by pressure, the taps are connected to a vacuum pump which is set to go on automatically at 34 degrees and off at 31.

It takes between 26 and 35 gallons of Sugar Maple sap to produce one gallon of syrup. The soft maples need twice as much sap to produce the same amount of syrup. The sap earlier in the year has more water per sugar; the mid-season the least. As the season progresses the growth of bacteria in the equipment produces darker syrup.

The evaporator can boil off 150 gallons of water an hour. The raw sap is heavier than syrup, so the evaporator uses that fact to move the sap along and keep the sap and sugar from mixing. It requires 3 gallons of fuel to evaporate to one gallon of syrup.

At the end of the season all the lines are flushed with 300 gallons of hot water



SPEAKERS FOR 2008

April
May
June

Rob from Dragon Fly Gardens
Rain Garden



2008 COMMITTEES

MEMBERSHIP:

This committee will work to encourage new members to join the group and become active members of the group. This could entail mentoring new members.

GROUP FUNDRAISER:

This committee will work on developing fund raisers for the group and coordinating the implementation of the fundraiser.

Maggie Swiontek

Debbie Peterson

Sally Pickard

COMMUNITY EDUCATION PROGRAMS:

This committee will work to develop educational programs and speaking engagements in the community. These may be through the schools, 4H groups, youth groups, senior citizen groups, community education, etc.

VOLUNTEER PROJECTS:

This committee will work to coordinate the volunteer projects that the group will take on for the year. They will be responsible for collecting requests, getting the information out to the members and coordinating the volunteers for the projects.

Todd Demers

Jim West

POLK COUNTY FAIR:

This committee will coordinate the display and the workers for the booth at the Polk County Fair.

Bonnie Corcoran

Ann Ringlien

Todd Demers

SPORTSMAN SHOW:

This committee will coordinate the display and workers for the Sportsman Show.

Julie Kuehl (Chair)

Maggie Swiontek

Jackie Whitcomb

Ann Ringlien

COUNTY HELPLINE:

This committee will help Ryan's office with answering questions that come in on the helpline.

Paula Kramer (Chair)

Amy Muryn

MASTER GARDENER TRAINING PROGRAM:

This committee will help coordinate the MG training program.

Paula Kramer

Amy Muryn

ADVERTISING:

This committee is in charge of getting information out to media for events.

Jackie Whitcomb _____

Other possible ideas:

EARTH DAY AT RECYCLING CENTER

ARBOR DAY PROGRAM

Jim West _____

FIELD TRIPS (In addition to the monthly meeting speakers)

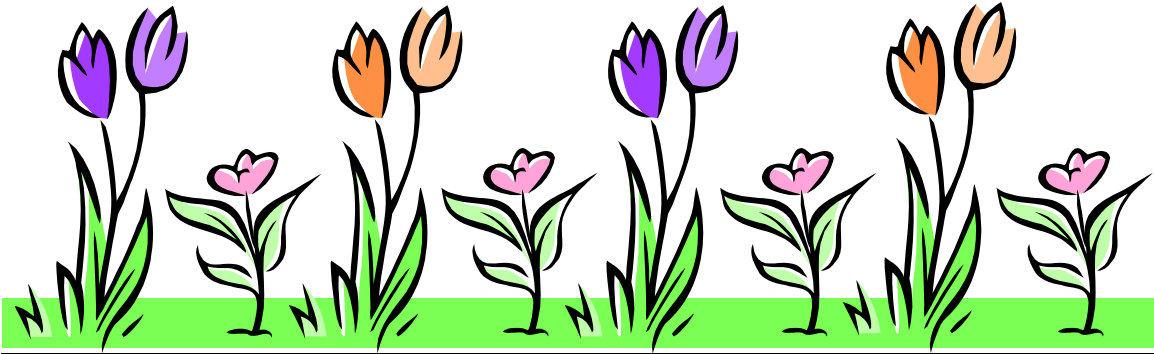
Ann Ringlien _____

_____ Arboretum/Conservatory



THERE IS STILL PLENTY OF ROOM FOR ADDITIONAL HELP ON COMMITTEES. THIS GROUP IS ONLY AS GOOD AS ITS VOLUNTEERS.

Club Volunteer Opportunities.



**THIS PAGE IS WAITING FOR THE
SUMMER PROJECTS.**

Fritz has scheduled a gardening seminar at Clear Lake Library for **Saturday April 19 from 9-11 AM**. If you are interested in helping with this seminar let Fritz know.

Sportsman Show in St. Croix Falls

April 26 from 9-5 and April 27 from 10-4. Contact Julie Kuehl at julie.kuehl@leonard.com if interested in helping. Demonstration will be on pumpkin growing.



CLUB PLANT SALE

Calling all plants!!!!!!!

Wanderoos on Mother's Day. We will have a booth to sell plants. Everyone who has house plants, vegetables, annuals or perennials they're willing to part with should contact Jim West and let him know. More information at next months meeting.