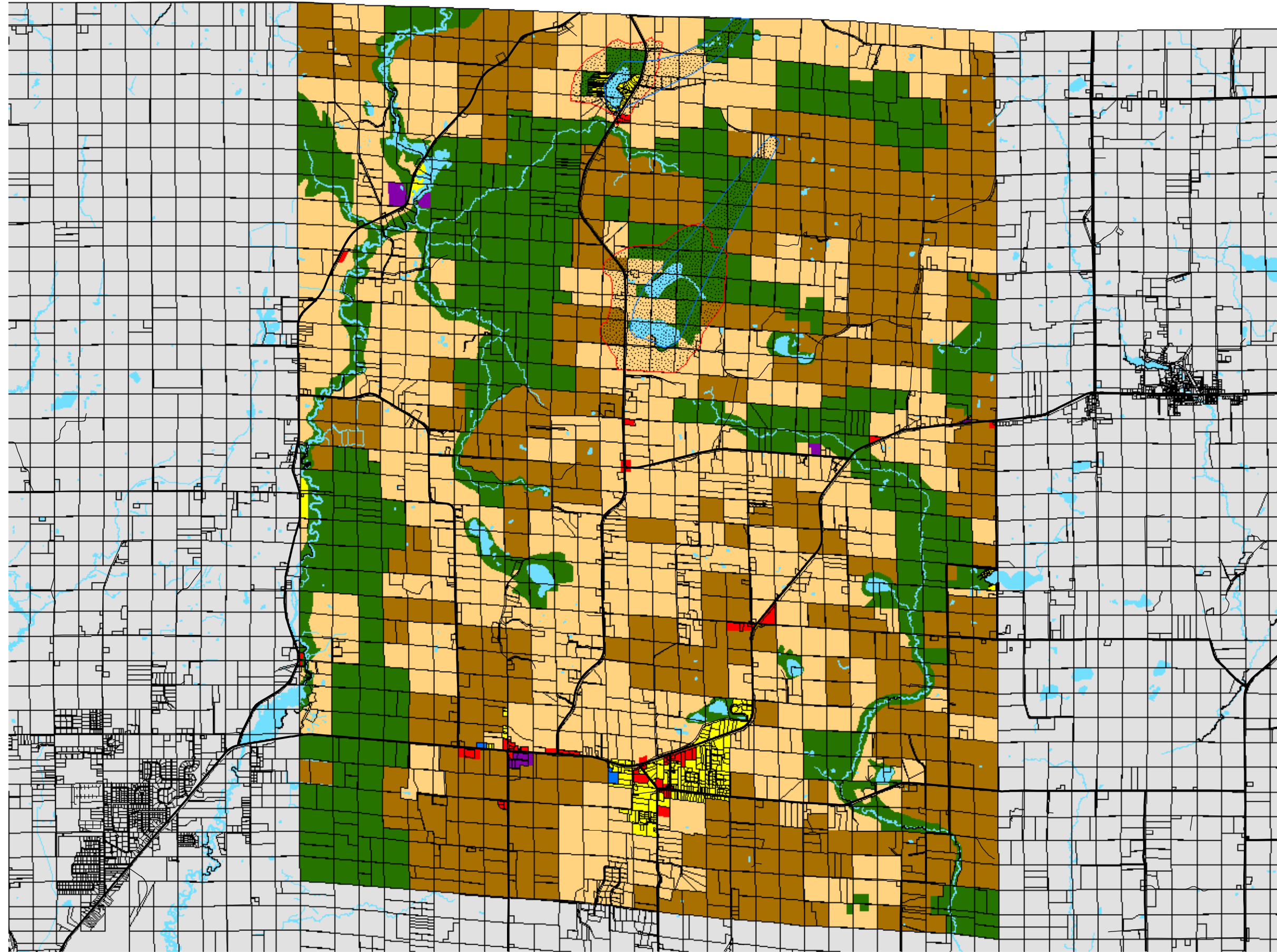
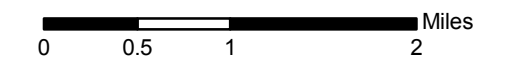


# Map 043A Future Land Use



## Future Land Use

- Residential
- Commercial
- Institutional
- Industrial
- L-2 General Agriculture
- L-3 Limited Ag/Mixed Use
- Natural Areas Protected
- Lake Watershed
- Lake Groundwatershed
- Natural Area Limited Development Overlay District



Source: Portage County Planning & Zoning (2006)  
Town of Sharon (2006)

Town Board Adopted: February 13, 2007  
Amended: August 12, 2008

## Town of Sharon Comprehensive Plan