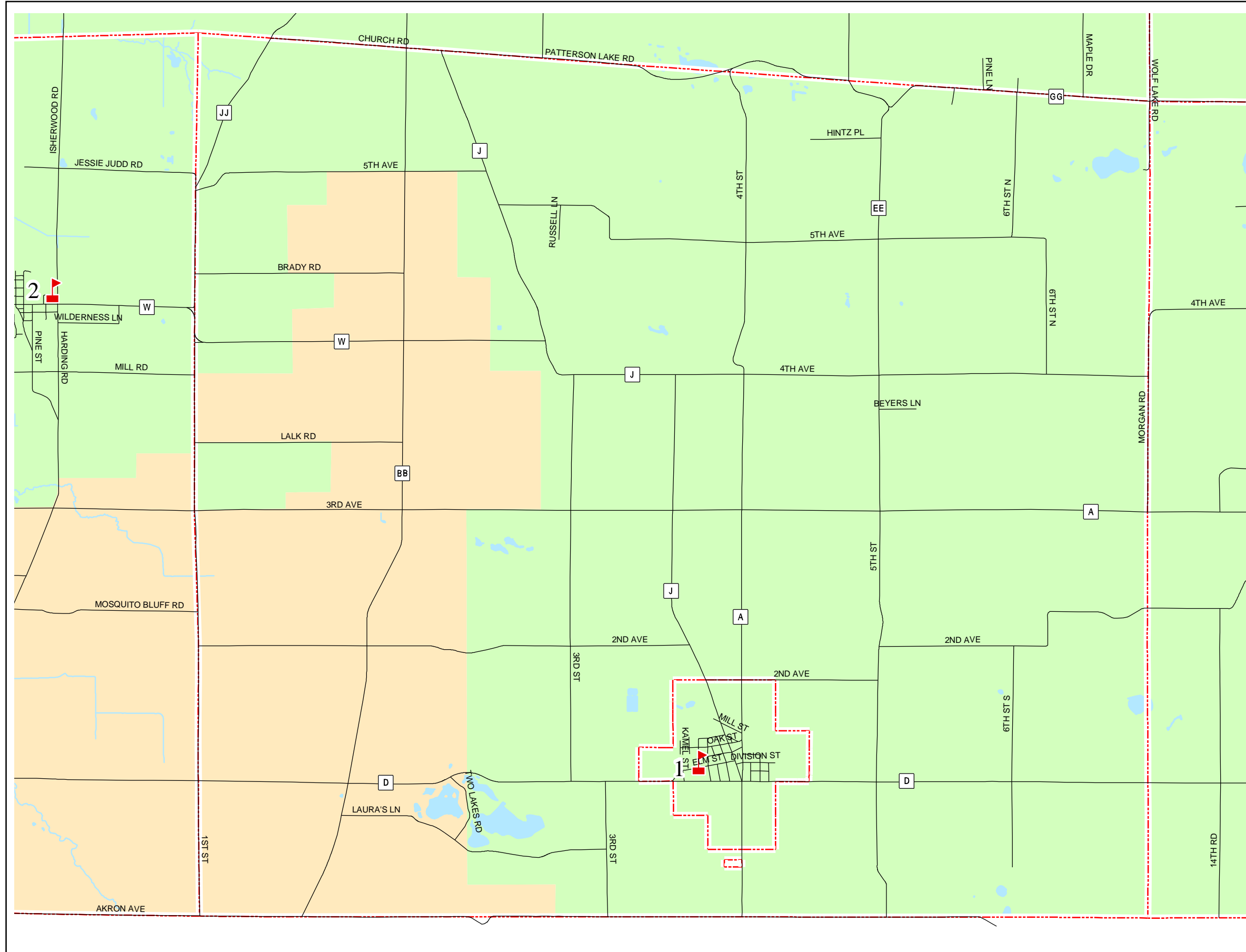
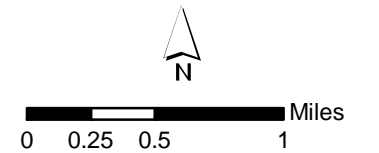


Map 4.2 School Districts



- Almond-Bancroft School Dist
- Tri-County Area School Dist

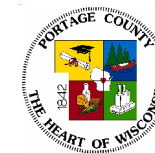
- 1 Almond-Bancroft School (1-12)
- 2 Bancroft School (Kindergarten)



Source: Town of Almond (2004)
Portage County Planning & Zoning (2004)

Map Produced: October 20, 2004

Town of Almond Comprehensive Plan



Portage County
Planning & Zoning
1462 Strongs Ave.
Stevens Point, WI 54481