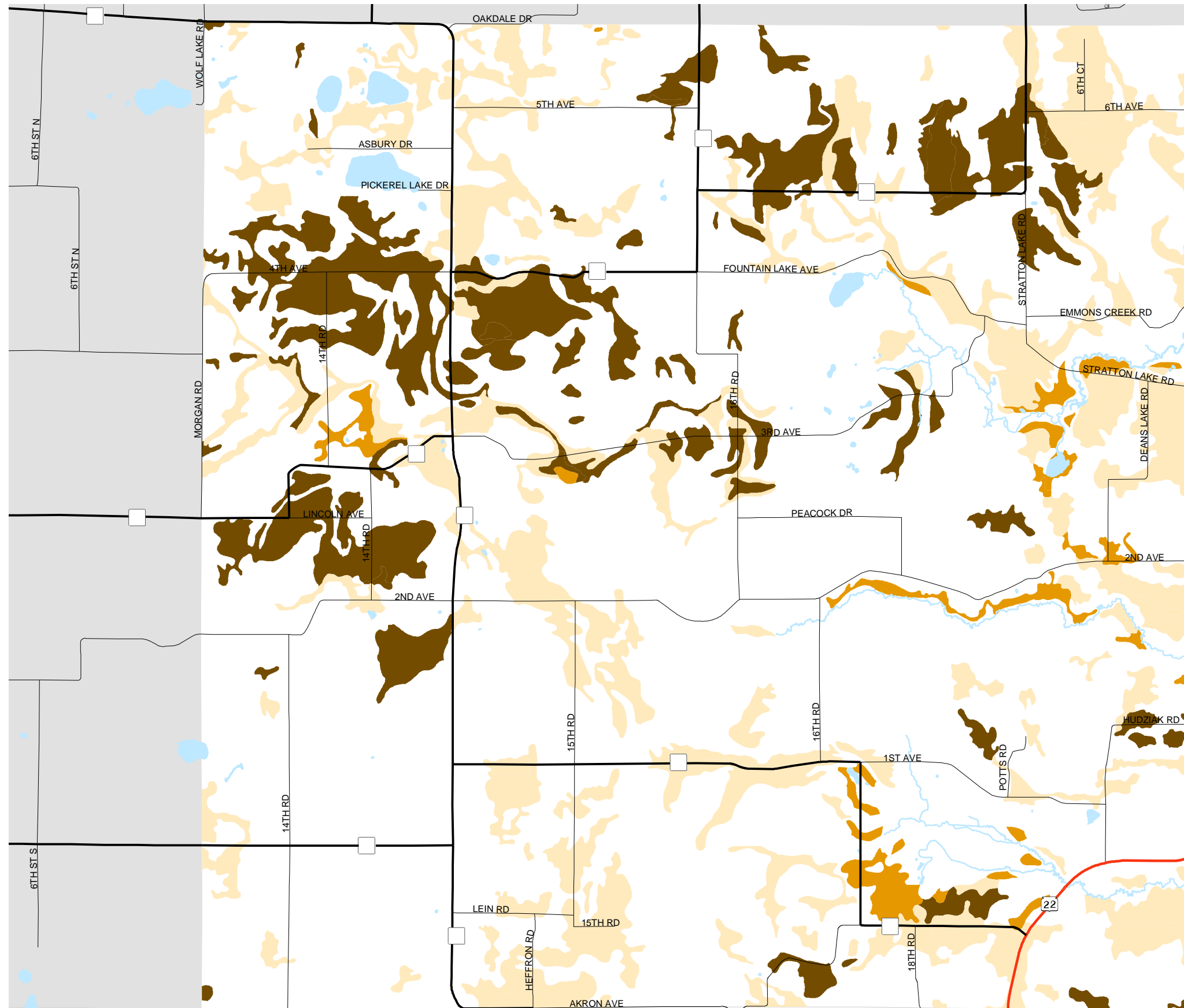
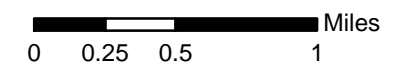


# Map 5.1 Highly Productive Agricultural Soils



### Soil Class

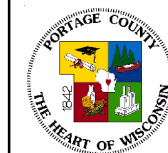
- Prime Agriculture**  
 ROSHOLT LOAM, 2 TO 6 PERCENT SLOPES  
 ROSHOLT LOAM, LOAMY SUBSTRATUM, 0 TO 2 PERCENT SLOPE  
 WYOCENA SANDY LOAM, 2 TO 6 PERCENT SLOPES  
 MECAN LOAMY SAND, 2 TO 6 PERCENT SLOPES  
 BILLETT SANDY LOAM, 0 TO 2 PERCENT SLOPES
- Prime Ag if Drained**  
 OESTERLE LOAM, SILTY SUBSOIL VARIANT  
 OESTERLE SANDY LOAM
- Prime Ag if Irrigated**  
 FRIENDSHIP LOAMY SAND, 0 TO 3 PERCENT SLOPES  
 RICHFORD LOAMY SAND, 0 TO 2 PERCENT SLOPES  
 RICHFORD LOAMY SAND, 2 TO 6 PERCENT SLOPES



Source: Natural Resource Conservation Service (1998)  
 Portage County Planning & Zoning (2004)

Adopted: June 14, 2005

## Town of Belmont Comprehensive Plan



Portage County  
 Planning & Zoning  
 1462 Strongs Ave.  
 Stevens Point, WI 54481