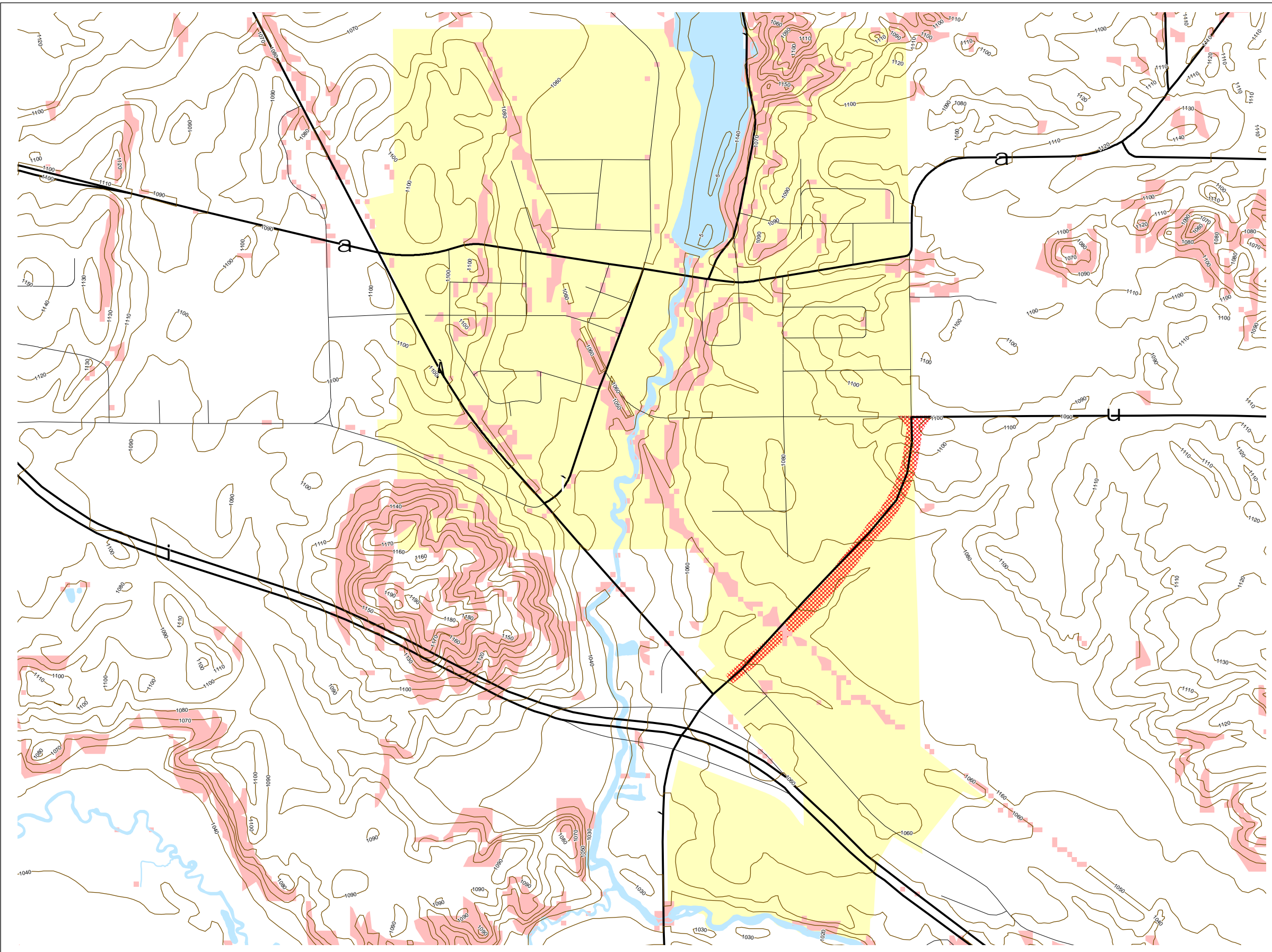


Map 5.1 Topography



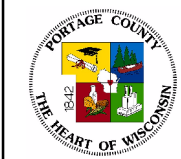
- Contours
- 12% or Greater Slope
- ▨ Future County Road A/B



Source: US Geological Survey (1967-1973)
Portage County Planning & Zoning (2004)

Map Adopted: February 22, 2005

Village of Amherst Comprehensive Plan



Portage County
Planning & Zoning
1462 Strongs Ave.
Stevens Point, WI 54481