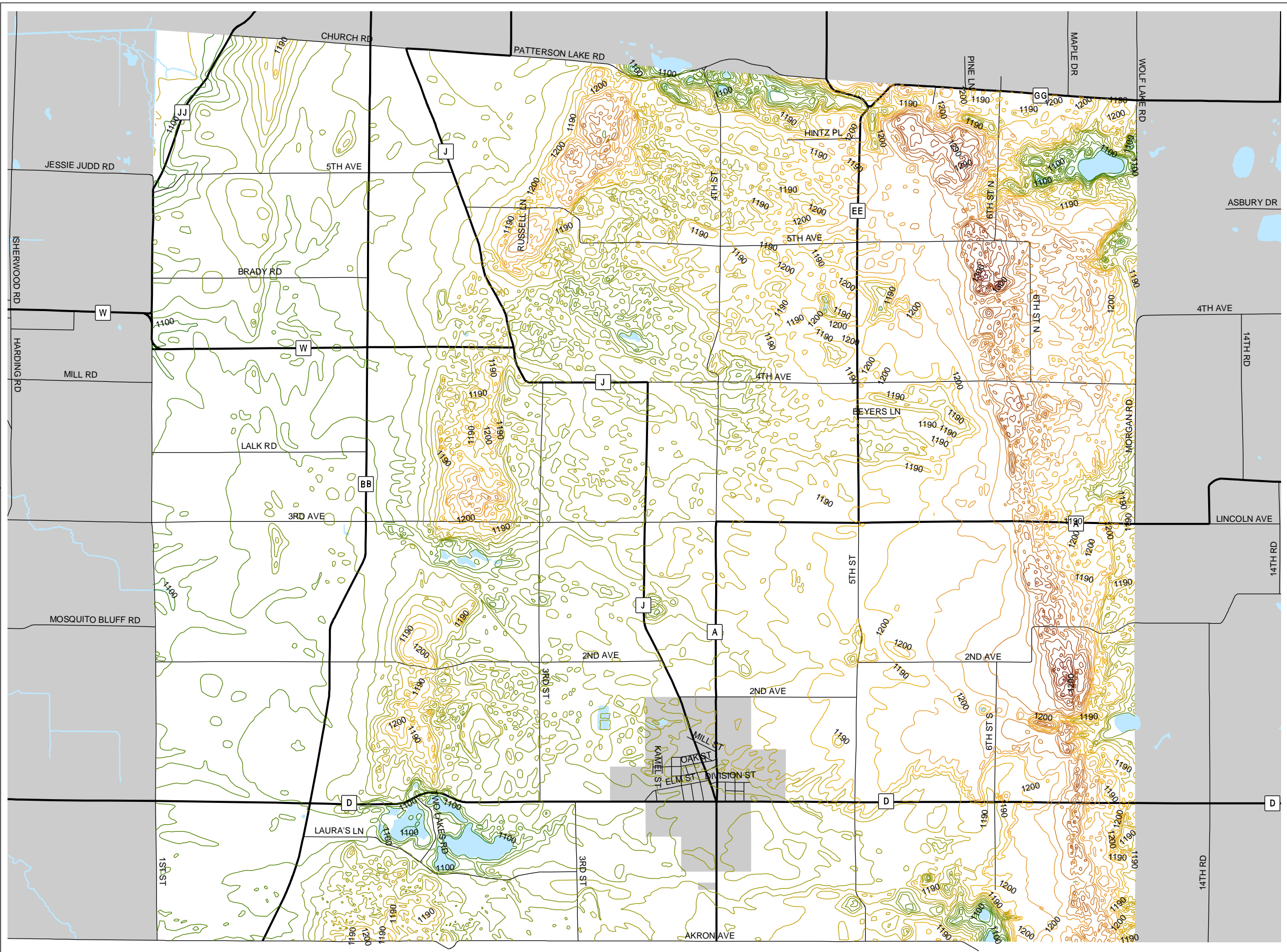
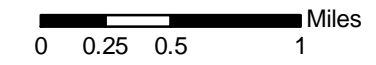


Map 5.2 Topography



Elevation (ft.)

- 1090 - 1100
- 1101 - 1120
- 1121 - 1140
- 1141 - 1160
- 1161 - 1180
- 1181 - 1200
- 1201 - 1220
- 1221 - 1240
- 1241 - 1260
- 1261 - 1280
- 1281 - 1300
- 1301 - 1320



Source: Portage County Planning & Zoning (2004)
U.S. Geological Survey (1967-1971)

Map Produced: October 20, 2004

Town of Almond Comprehensive Plan



Portage County
Planning & Zoning
1462 Strongs Ave.
Stevens Point, WI 54481