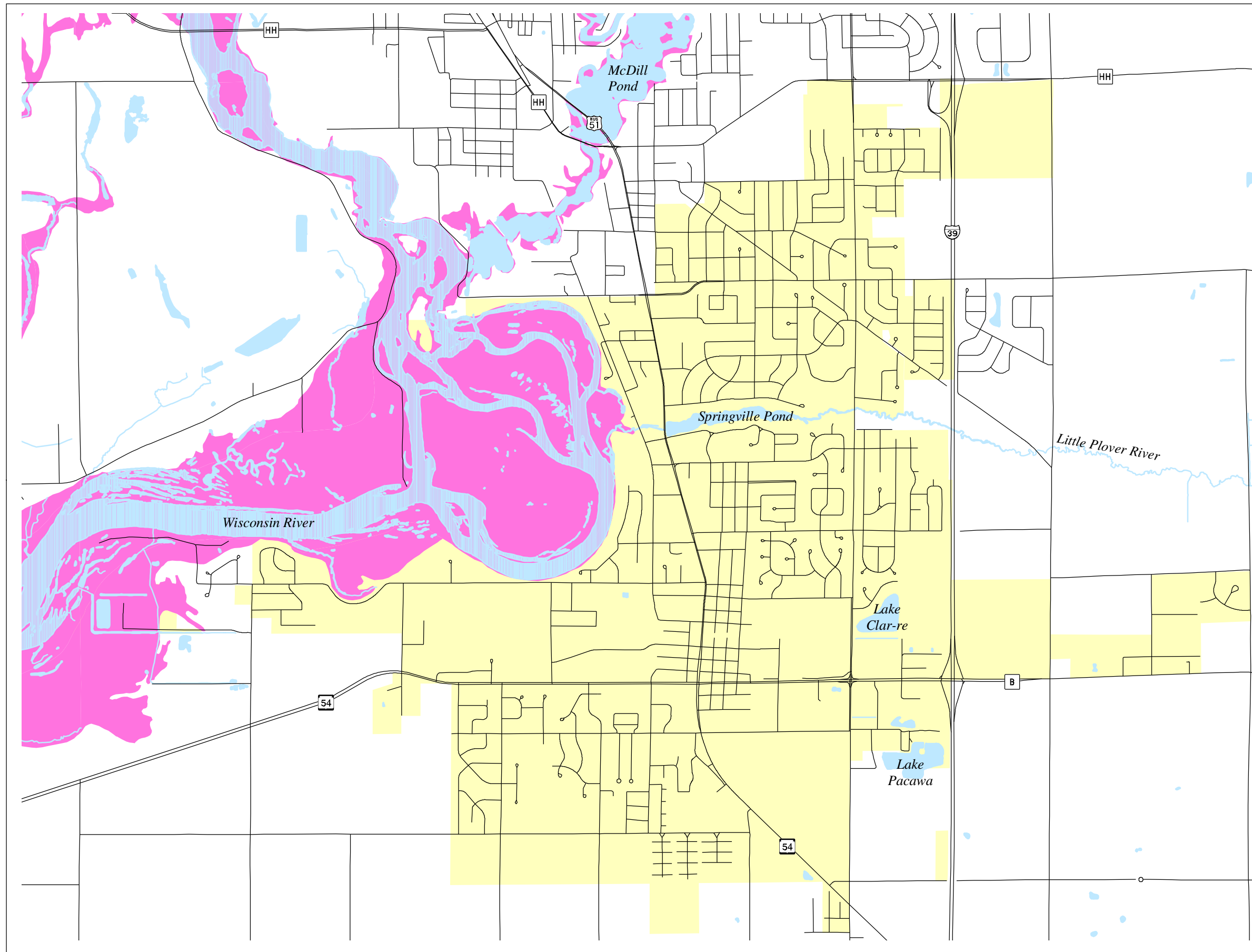


# Map 5.3 Floodplain



 One Hundred Year Floodplain

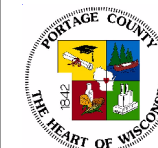


0 0.25 0.5 1 Miles

Source: Portage County Planning & Zoning (2005)  
Federal Emergency Management Agency (1982)

Map Produced: April 6, 2005

## Village of Plover Comprehensive Plan



Portage County  
Planning & Zoning  
1462 Strongs Ave.  
Stevens Point, WI 54481