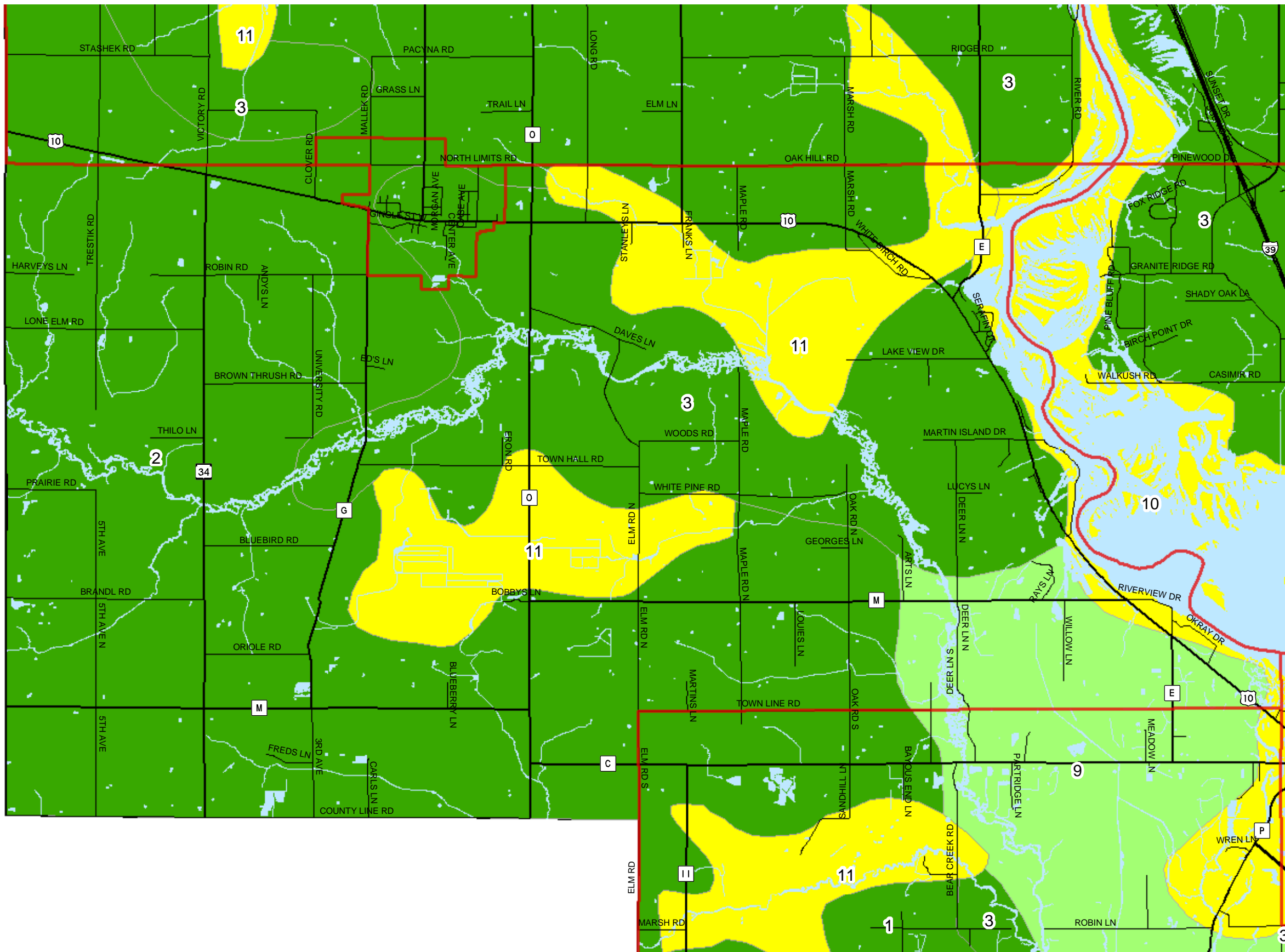


Map 5.3 General Soil Associations



Soil Associations

Soils formed in loamy or silty materials and the underlying residuum from bedrock

- 1 Kert-Norgo Variant Association
- 2 Meadland-Rozellville-Dolph Association
- 3 Point-Dancy-Mosinee Association

Soils formed in sandy glacial drift

- 4 Wyocena-Rosholt Association
- 5 Kranski-Coloma-Mecan Association

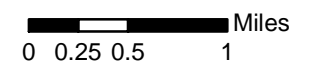
Soils formed mainly in outwash sand and gravel or sand

- 6 Richford-Rosholt-Billett Association
- 7 Plainfield-Friendship Association
- 8 Leola-Pearl Association
- 9 Roscommon-Meehan-Markey Association

Soils formed in alluvial or organic deposits

- 10 Alluvial Land, Wet-Dunnville Association
- 11 Markey-Seelyville-Cathro Association

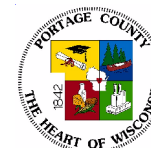
Municipal Boundaries



Source: Natural Resource Conservation Service (1977)
Portage County Planning & Zoning (2004)

Map Adopted: March 23, 2005

Town of Carson Comprehensive Plan



Portage County
Planning & Zoning
1462 Strongs Ave.
Stevens Point, WI 54481