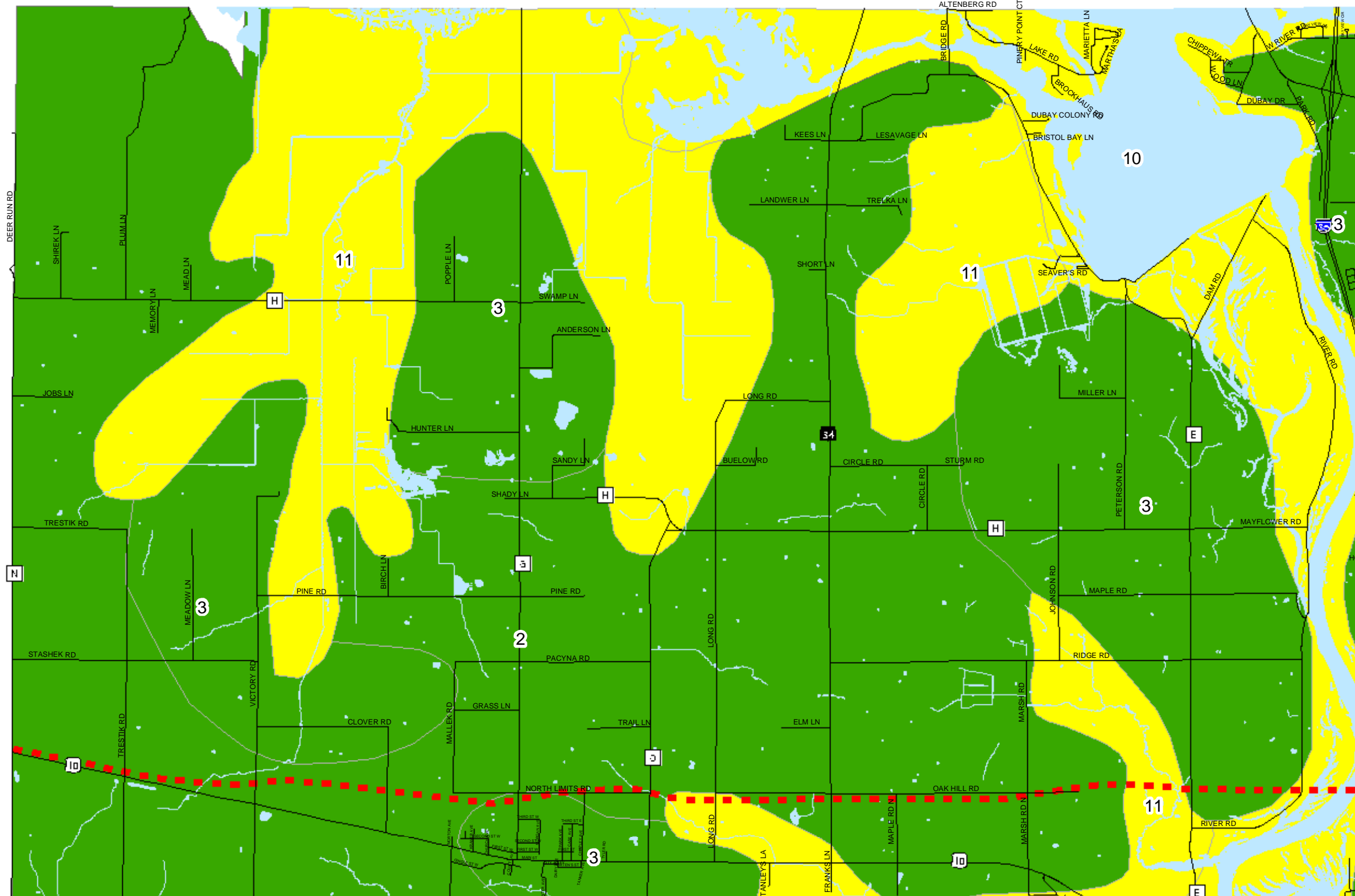


# Map 5.3 Soil Associations



## Soil Associations

Soils formed in loamy or silty materials and the underlying residuum from bedrock

- 1 Kert-Norgo Variant Association
- 2 Meadland-Rozellville-Dolph Association
- 3 Point-Dancy-Mosinee Association

Soils formed in sandy glacial drift

- 4 Wyocena-Rosholt Association
- 5 Kranski-Coloma-Mecan Association

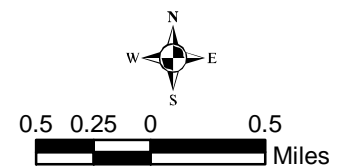
Soils formed mainly in outwash sand and gravel or sand

- 6 Richford-Rosholt-Billett Association
- 7 Plainfield-Friendship Association
- 8 Leola-Pearl Association
- 9 Roscommon-Meehan-Markey Association

Soils formed in alluvial or organic deposits

- 10 Alluvial Land, Wet-Dunnville Association
- 11 Markey-Seelyville-Cathro Association

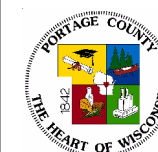
■ ■ ■ Highway 10 Realignment



Source: Portage County Planning & Zoning (2004)  
Natural Resource Conservation Service (1998)

Adopted: July 13, 2005

## Town of Eau Pleine Comprehensive Plan



Portage County  
Planning & Zoning  
1462 Strongs Ave.  
Stevens Point, WI 54481