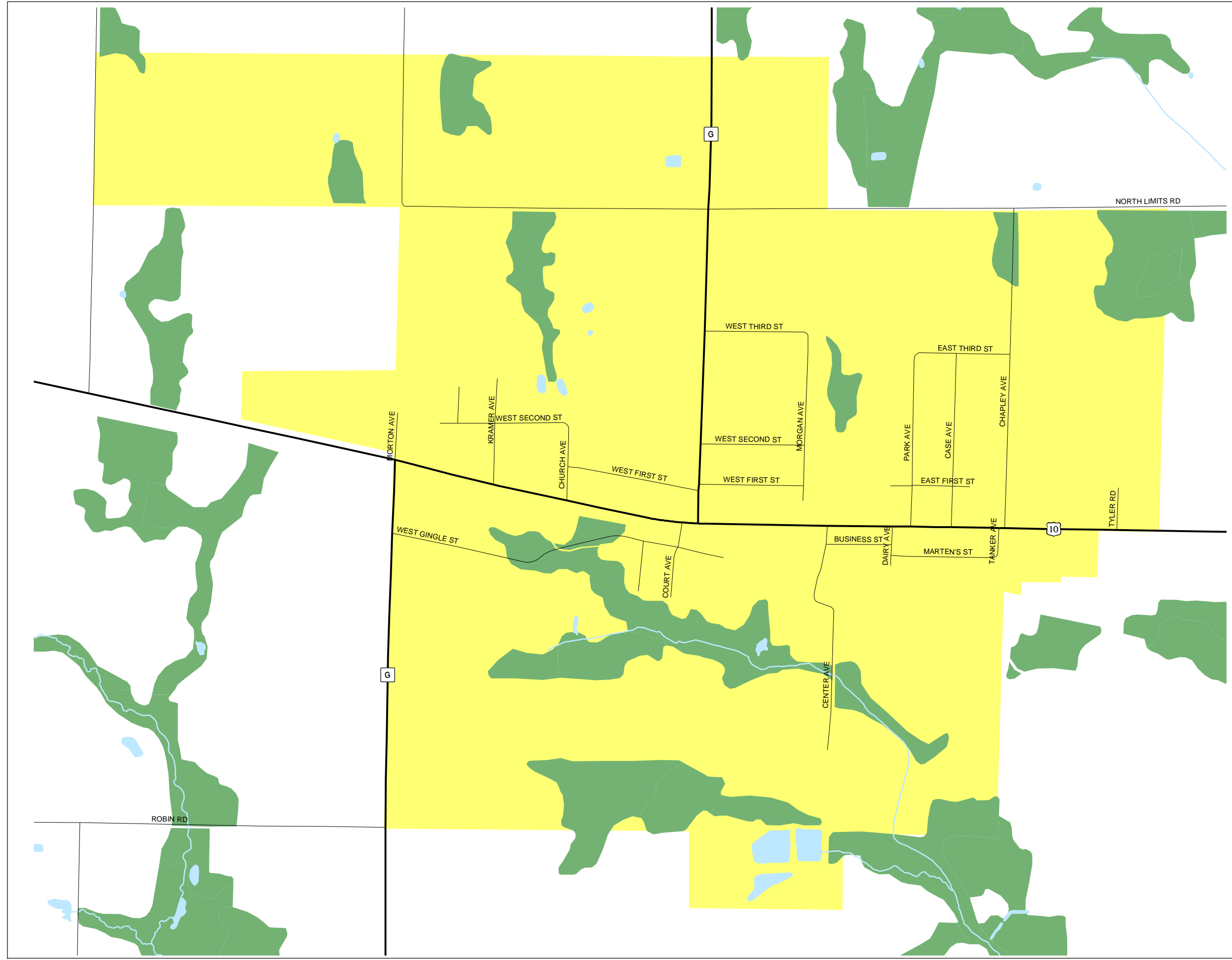


Map 5.4 Wetlands



 Wetlands



0 250 500 1,000 Feet

Source: Portage County Planning & Zoning (2004)
WDNR - Wisconsin Wetlands Inventory (1985)

Map Adopted: June 13, 2005

Village of Junction City Comprehensive Plan



Portage County
Planning & Zoning
1462 Strongs Ave.
Stevens Point, WI 54481