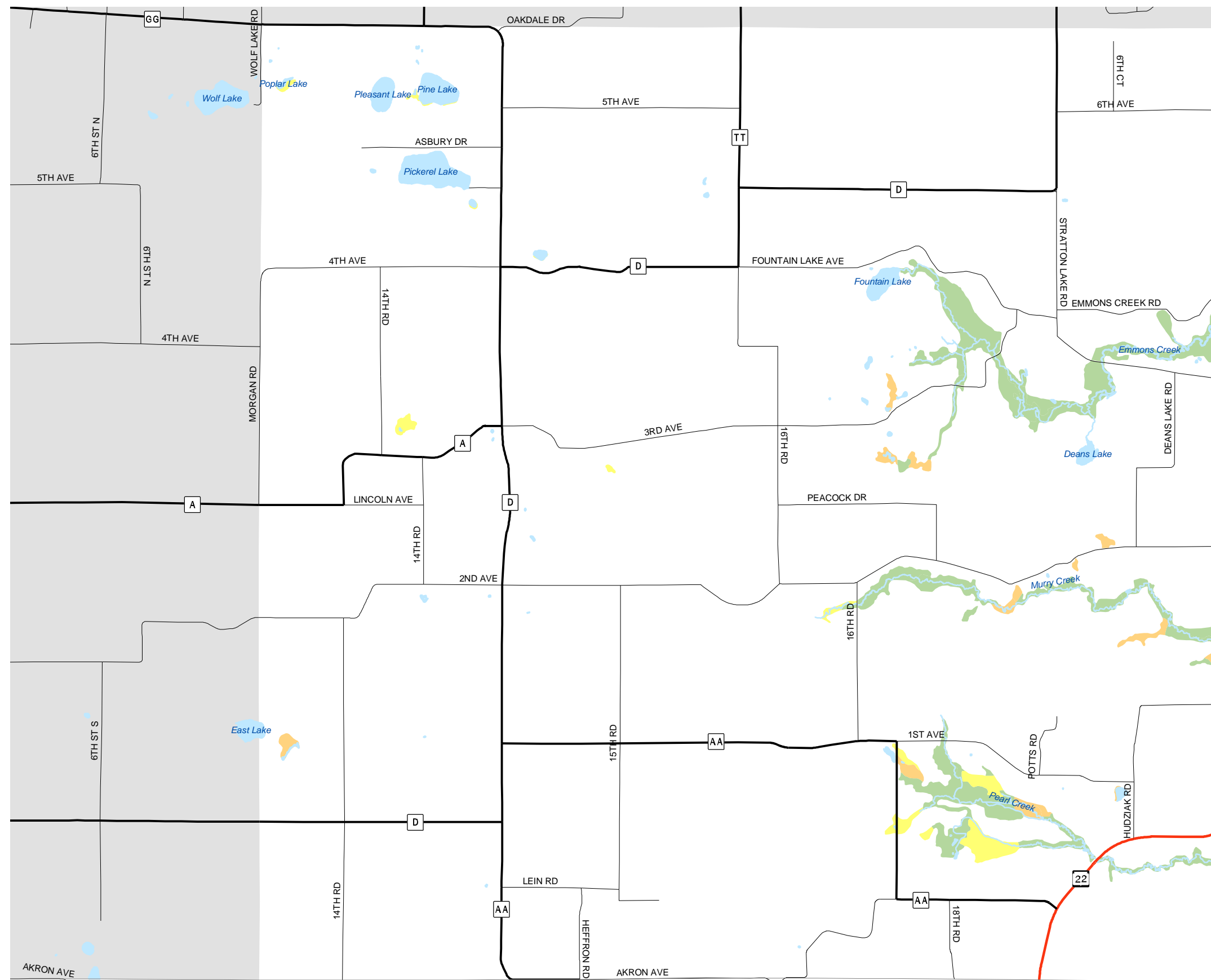
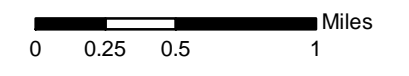
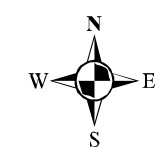


Map 5.4 Wetlands



- Wetland Class**
- Emergent / Wet Meadow
 - Scrub / Shrub
 - Forested



Source: Portage County Planning & Zoning (2004)
Wisconsin Wetlands Inventory (1985)

Adopted: June 14, 2005

Town of Belmont Comprehensive Plan



Portage County
Planning & Zoning
1462 Strongs Ave.
Stevens Point, WI 54481