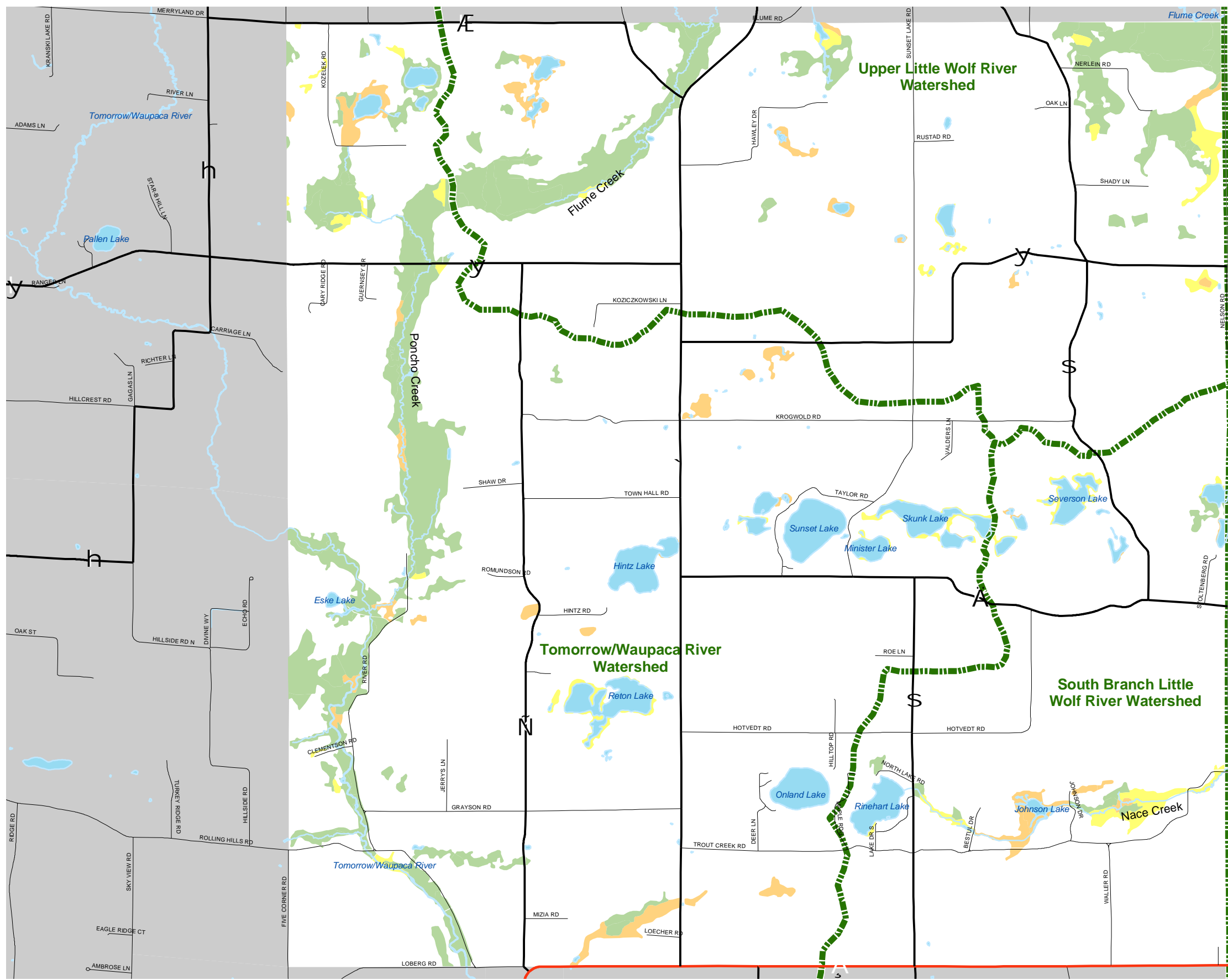


Map 5.4 Wetlands & Watersheds



- Wetland Class**
- Emergent / Wet Meadow
 - Scrub / Shrub
 - Forested

Source: Portage County Planning & Zoning (2004)
Wisconsin Wetlands Inventory (1985)

Adopted: September 21, 2005

Town of New Hope Comprehensive Plan



Portage County
Planning & Zoning
1462 Strongs Ave.
Stevens Point, WI 54481