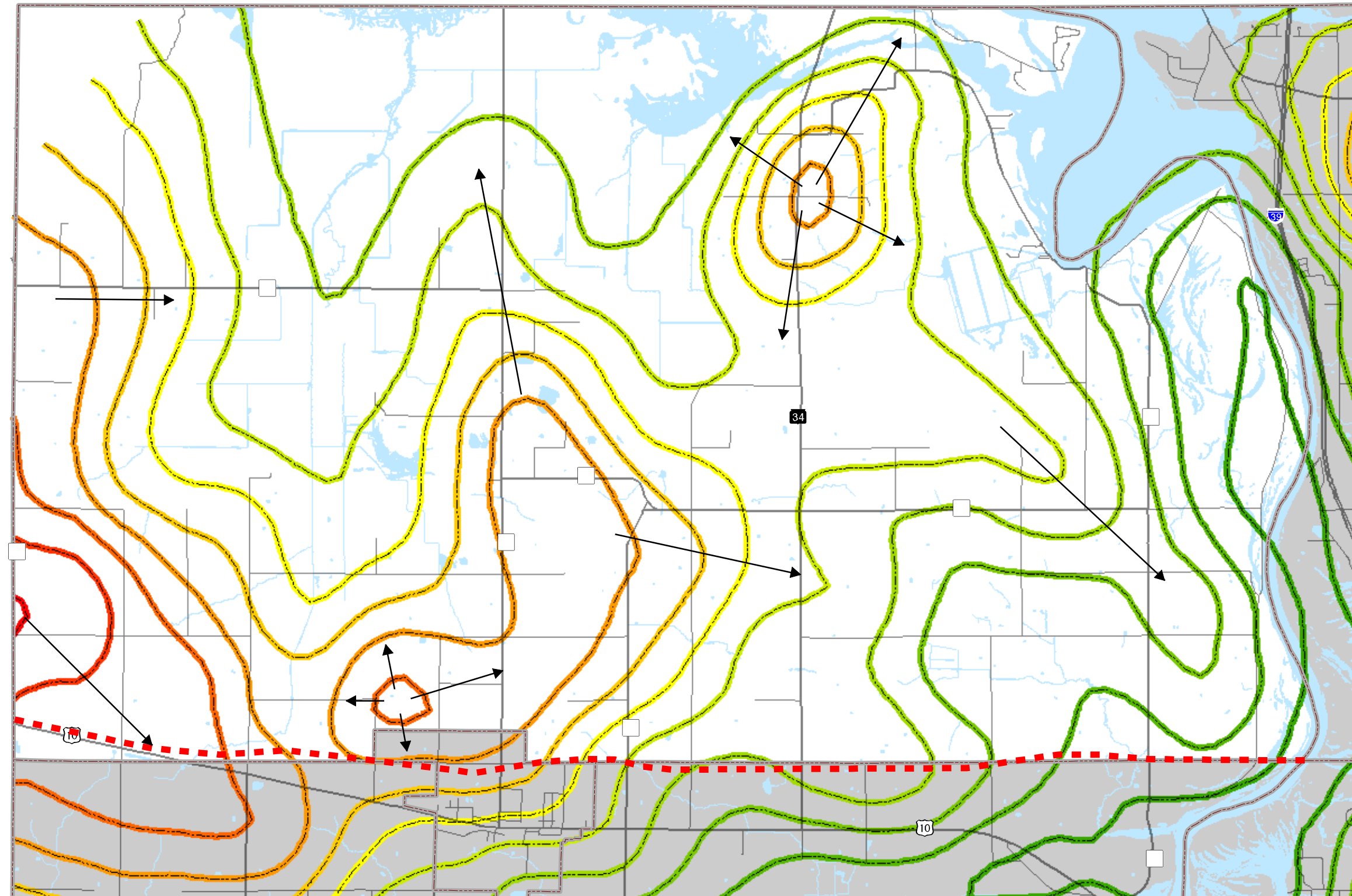


Map 5.6 Groundwater Flow

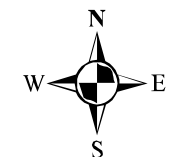


Groundwater Elevation (ft. above sea level)

- 1090
- 1100
- 1110
- 1120
- 1130
- 1140
- 1150
- 1160
- 1170
- 1180
- 1190

← Direction of travel

■ ■ ■ Highway 10 Realignment

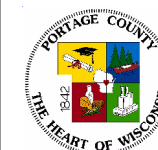


0 0.25 0.5 1 Miles

Source: Portage County Planning & Zoning (2004)

Adopted: July 13, 2005

Town of Eau Pleine Comprehensive Plan



Portage County
Planning & Zoning
1462 Strongs Ave.
Stevens Point, WI 54481