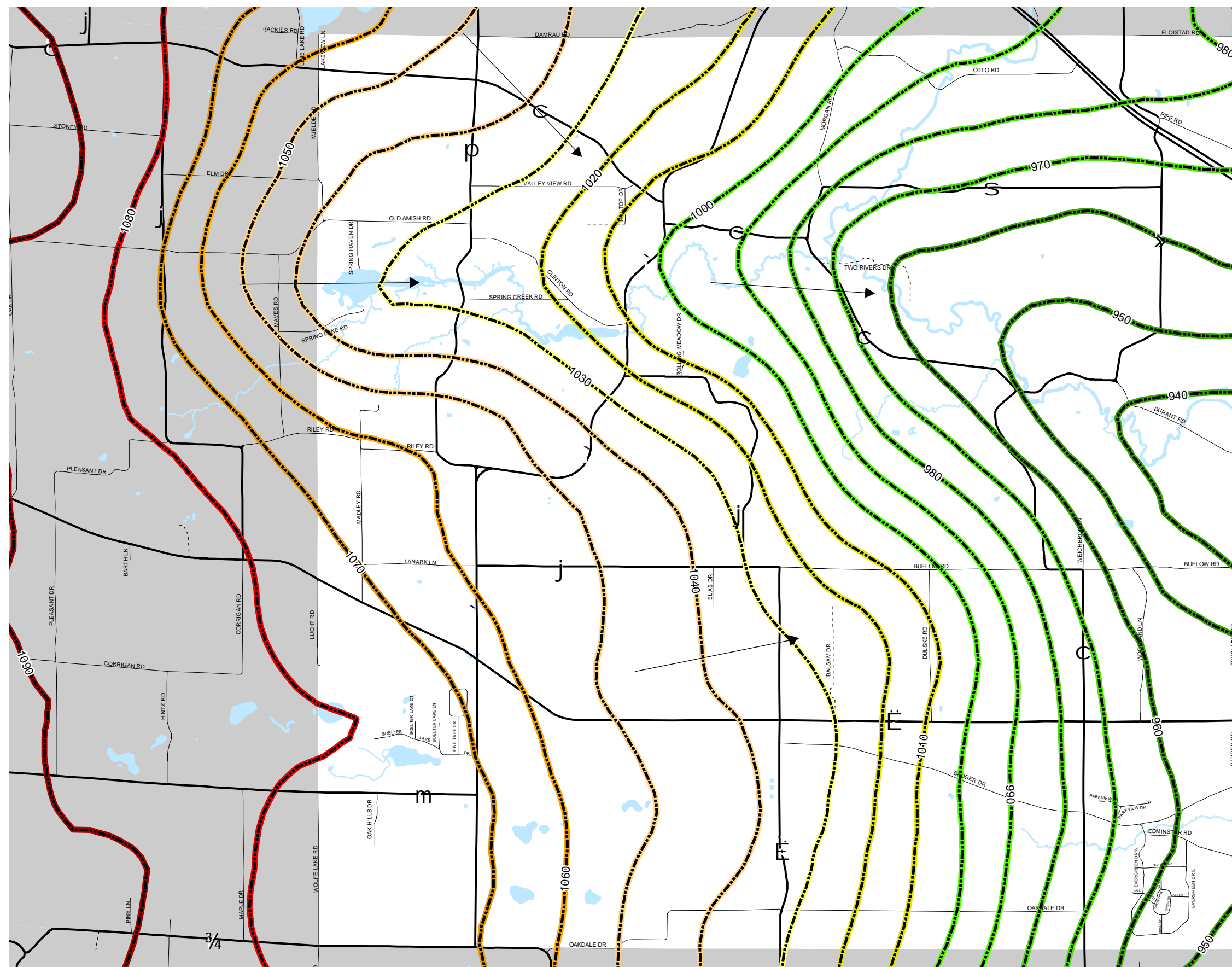
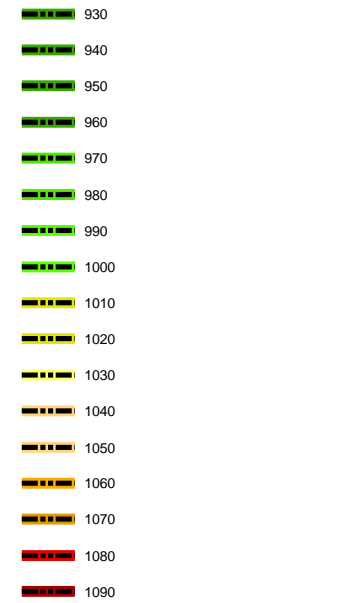


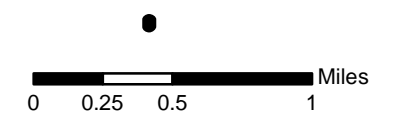
# Map 5.6 Groundwater Flow



### Groundwater Elevation (Ft)



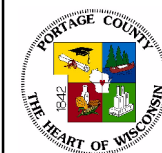
← Flow Direction



Source: Portage County Planning & Zoning (2004)

Plan Commission Adopted: August 9, 2005

## Town of Lanark Comprehensive Plan



Portage County  
Planning & Zoning  
1462 Strongs Ave.  
Stevens Point, WI 54481