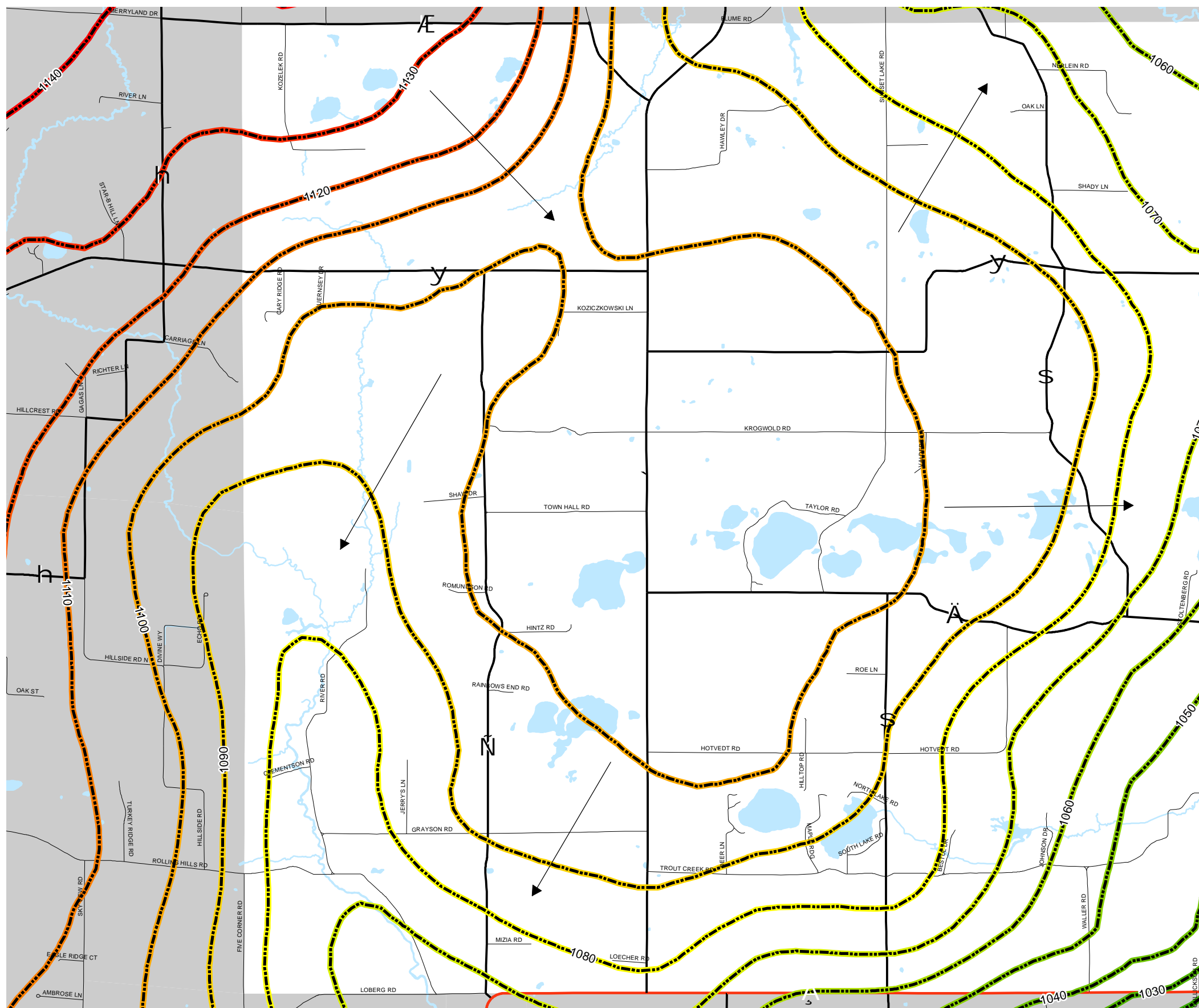


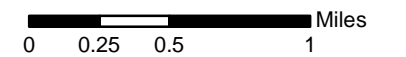
# Map 5.6 Groundwater Flow



### Groundwater Elevation (Ft)

- 1020
- 1030
- 1040
- 1050
- 1060
- 1070
- 1080
- 1090
- 1100
- 1110
- 1120
- 1130
- 1140

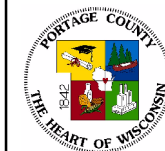
← Flow Direction



Source: Portage County Planning & Zoning (2004)

Adopted: September 21, 2005

## Town of New Hope Comprehensive Plan



Portage County  
Planning & Zoning  
1462 Strongs Ave.  
Stevens Point, WI 54481