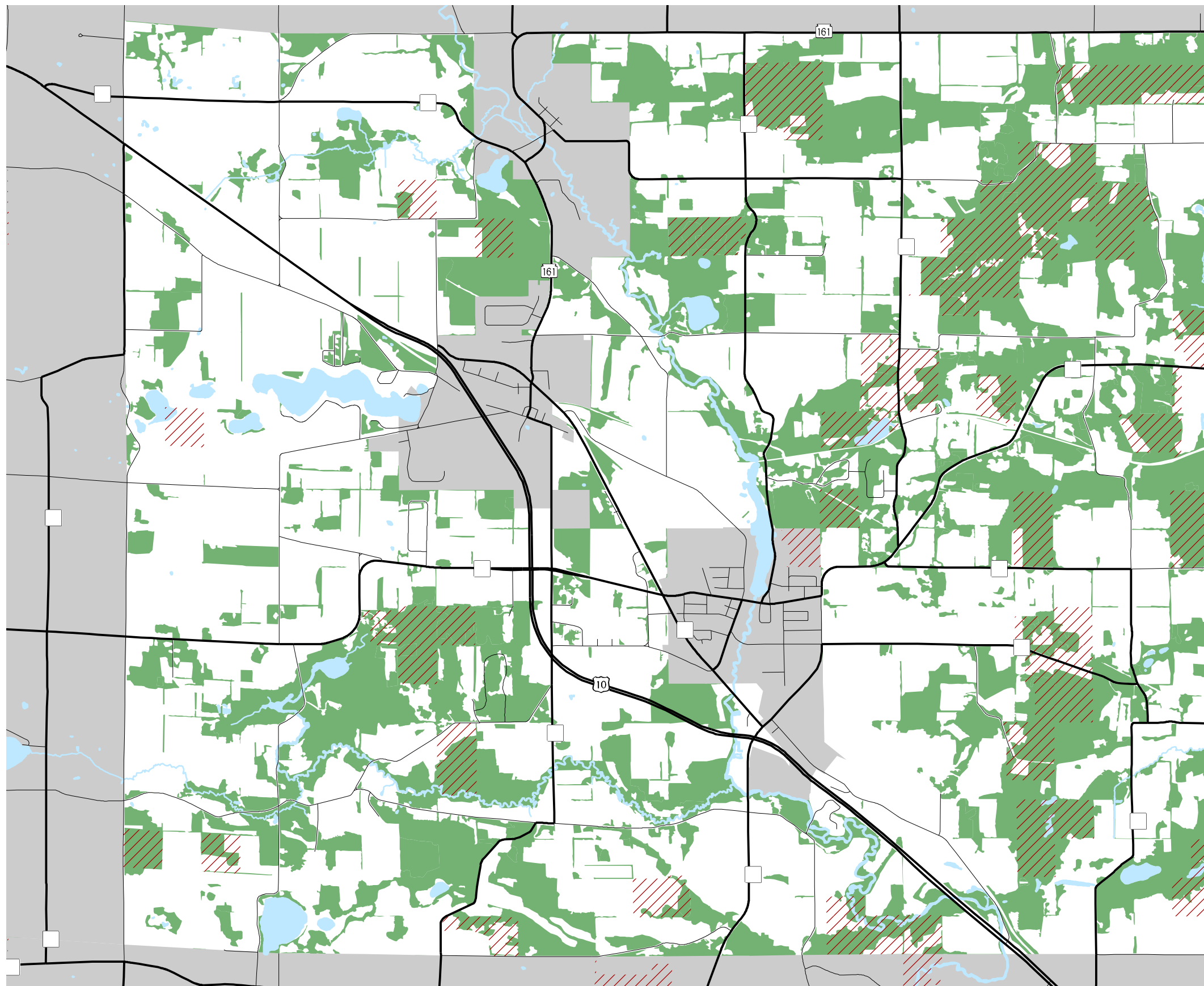
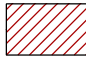

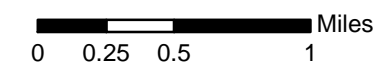


# Map 5.8 Forested Land



-  Managed Forest Land\*
-  Forested Land

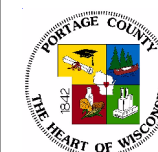
\*The entire parcel is shown, however, only the wooded portion of each parcel is included in the MFL program



Source: Portage County Planning & Zoning (2004)

Adopted: June 9, 2005

## Town of Amherst Comprehensive Plan



Portage County  
Planning & Zoning  
1462 Strongs Ave.  
Stevens Point, WI 54481