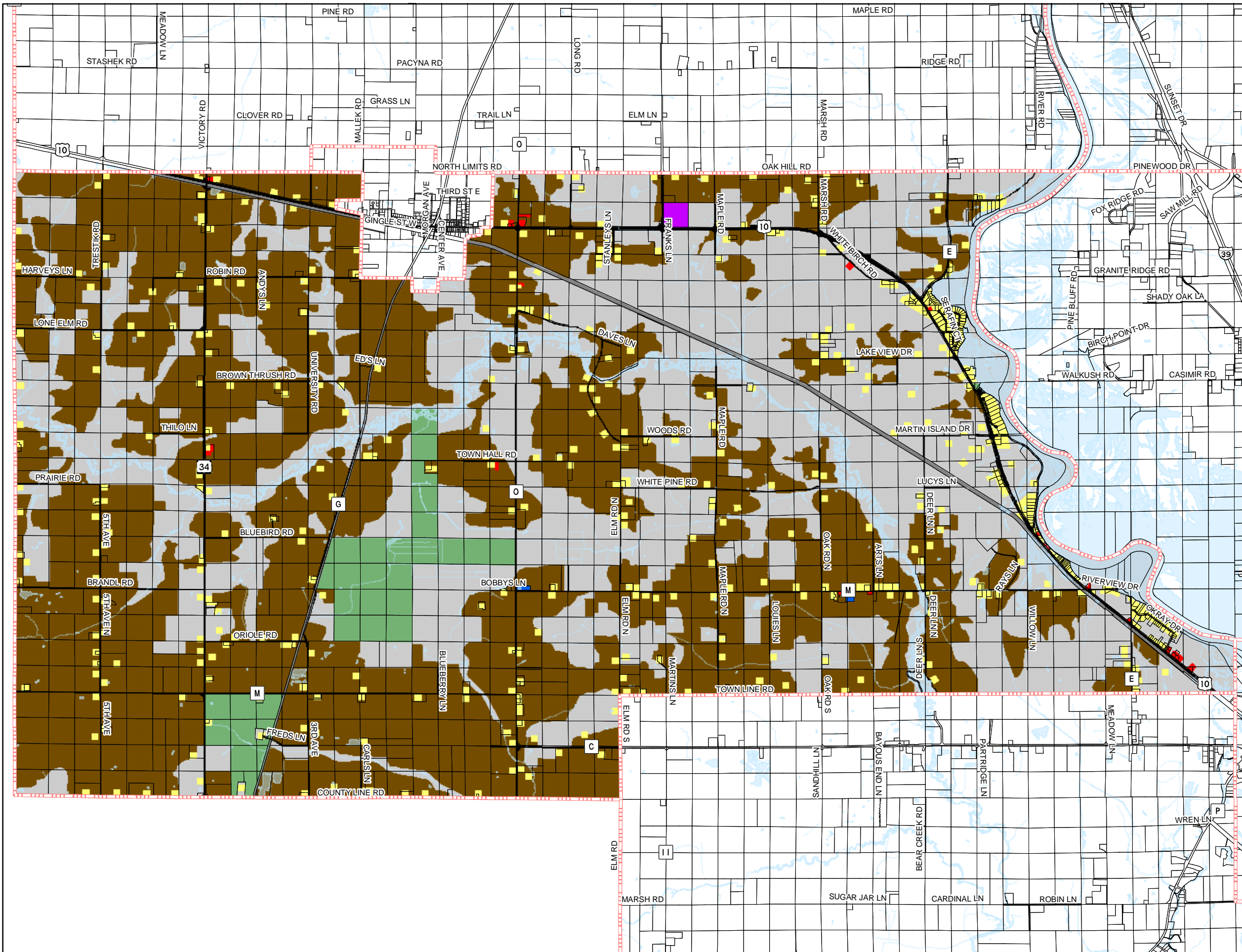
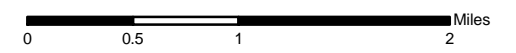


Map 8.1 Existing Land Use



- Land Use**
- Residential
 - Commercial
 - Governmental/Institutional
 - Industrial
 - Agricultural
 - Parks/Recreation
 - Road
 - Railroad
 - Vacant



Source: Town of Caron (2004)
Portage County Planning & Zoning (2004)
Map Adopted: March 23, 2005

Town of Caron Comprehensive Plan

Portage County Planning & Zoning
1462 Strongs Ave.
Stevens Point, WI 54481