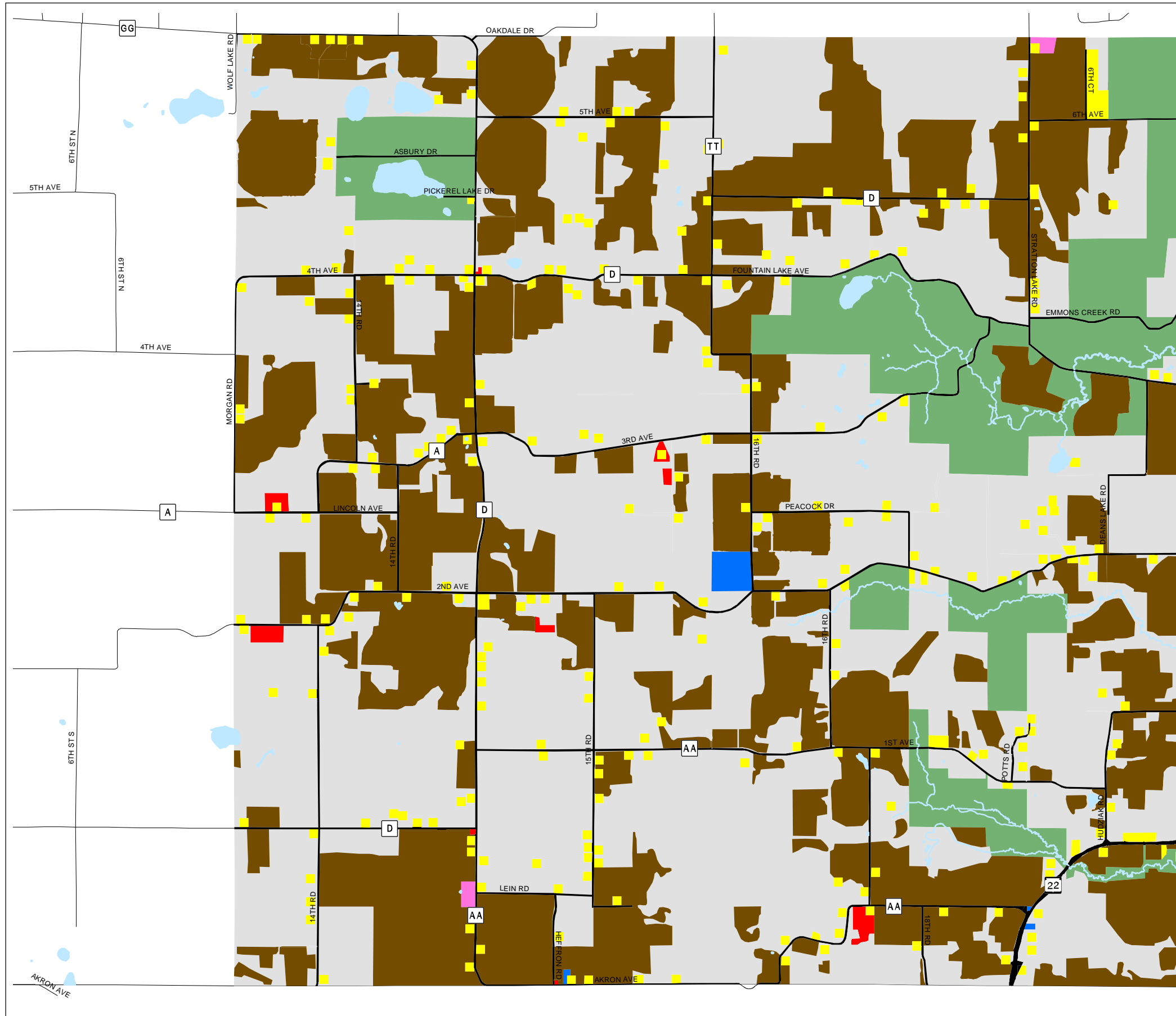
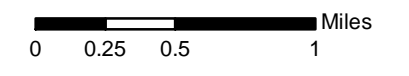


Map 8.1 Existing Land Use



Existing Land Use

- Agriculture
- Commercial
- Industrial
- Institutional
- Parks & Recreation
- Residential
- Road Right-of-Way
- Vacant



Source: Portage County Planning & Zoning (2004)

Adopted: June 14, 2005

Town of Belmont Comprehensive Plan



Portage County
Planning & Zoning
1462 Strongs Ave.
Stevens Point, WI 54481