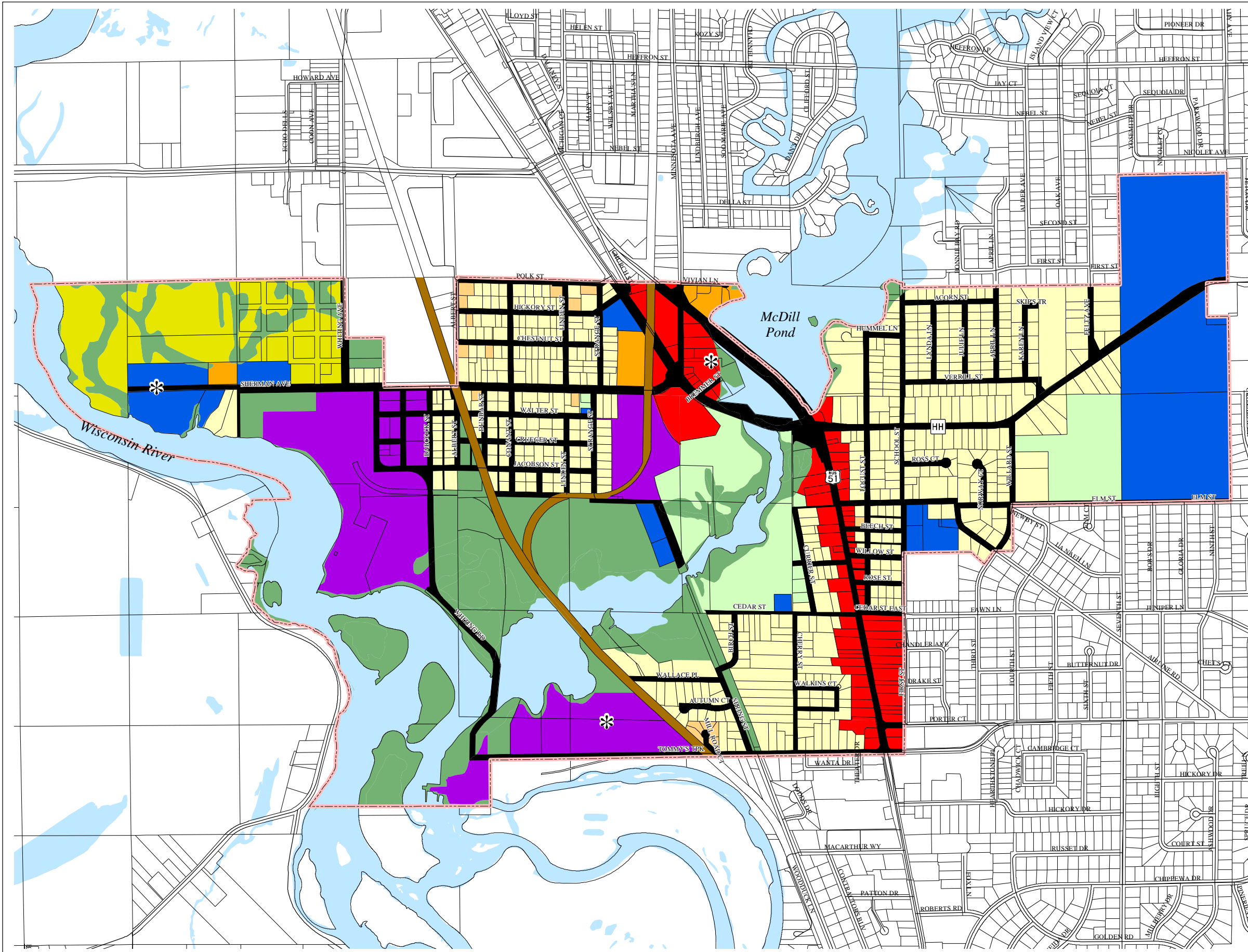
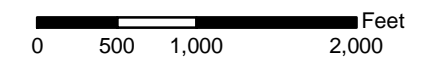


Map 8.3 Future Land Use



- Land Use**
- Single Family
 - Residential Planned Development
 - Duplex
 - Multi-family (3+ Units)
 - Commercial
 - Government / Institutional
 - Industrial
 - Park
 - Natural Areas / Open Space
 - Road Right-of-Way
 - Railroad Right-of-Way
 - Water

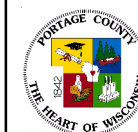
* Please refer to Map 8.2 and Section 8.2(E) for discussion of these infill/redevelopment areas.



Source: Portage County Planning & Zoning (2004)

Map Adopted: October 12, 2004

Village of Whiting Comprehensive Plan



Portage County
Planning & Zoning
1462 Strongs Ave.
Stevens Point, WI 54481