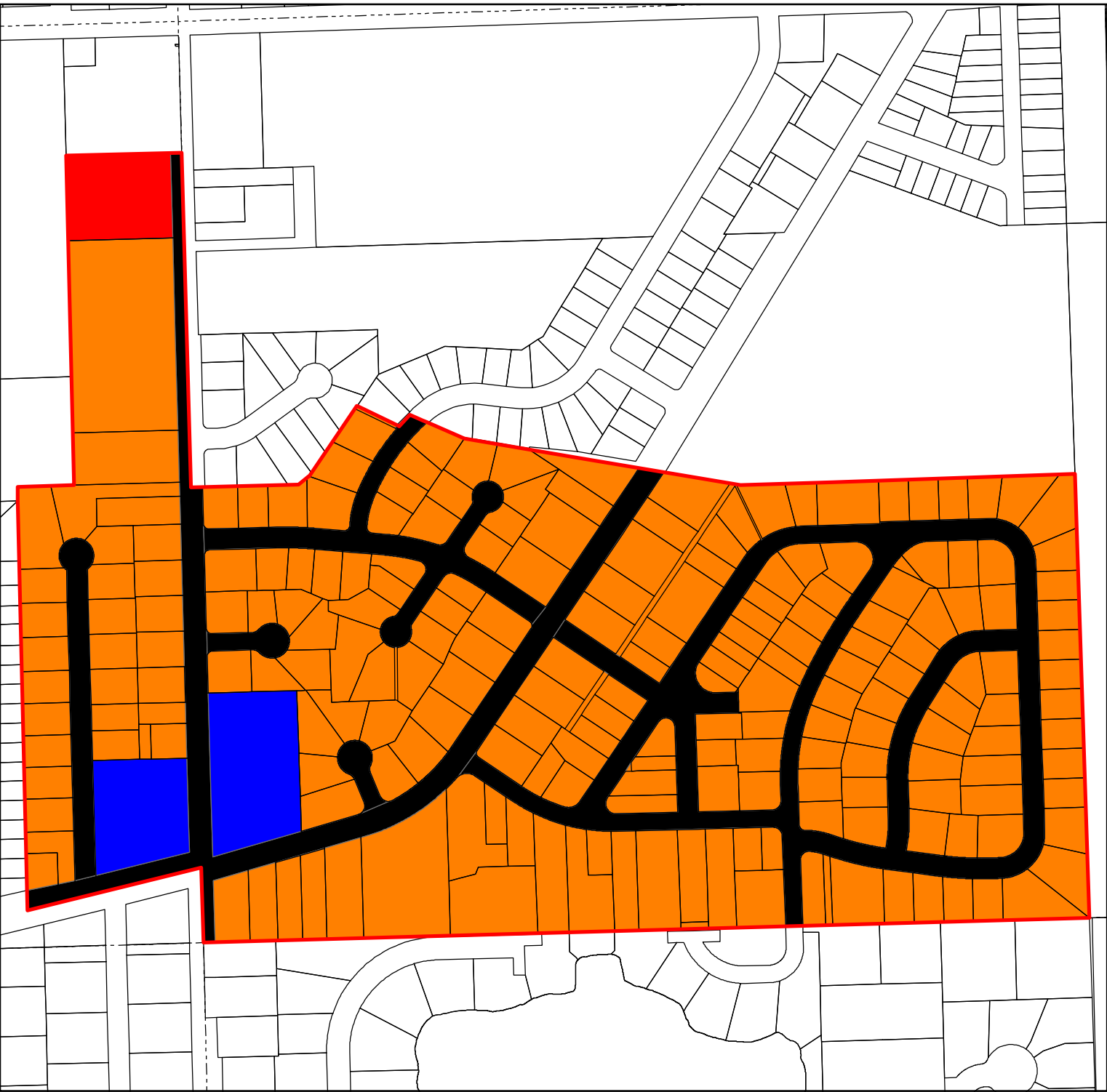


# RECOMMENDED LAND USE PLAN FOR THE VILLAGE OF ELMWOOD PARK: 2035



COMMERCIAL



STREETS AND HIGHWAYS



MEDIUM DENSITY RESIDENTIAL  
(6,200 SQ. FT. TO 18,999 SQ. FT. PER DWELLING UNIT)



GOVERNMENTAL AND INSTITUTIONAL

N



0 200 400 Feet



1 inch = 400 feet