



Learning for Life

Winter 2004-2005



Extension Impact: Education Makes a Difference

Over 4000 Landowners Respond to UW-Extension Survey

Connie Abert
4-H Youth Development
Greg Blonde
Agriculture
Marilyn Herman
Family Living
Mike Koles
Community Development
Penny Tank
4-H Youth Development

In This Issue	
<i>Landowner Survey</i>	1
<i>Report Shows Impact</i>	1
<i>4-H Officers Trained</i>	2
<i>InfoSource Benefits</i>	2
<i>Citizen Participation</i>	2
<i>Parents Gain Skills</i>	3
<i>Private Property Rights</i>	3
<i>Bev Haug Retires</i>	4
<i>School Breakfast Grants</i>	4

As part of the ongoing countywide comprehensive planning process, Greg Blonde, UW-Extension Agriculture Agent received a \$10,000 grant from the 2003 Farm Technology Days Executive Committee and \$1,000 from the UW-Extension Central District Innovative Grant program to conduct a countywide Landowner Survey. The goal of the survey is to 1) expand local input and education on agriculture and natural resources and (2) clarify community values and beliefs about the future of agriculture and rural life in Waupaca County.

Blonde worked with Mike Koles, Bruce Bushweiler and UW-

Extension Land Use Specialist, Merritt Bussiere, to develop a random survey that was mailed to over 10,000 landowners, approximately half of all landowners in Waupaca County.

A tremendous response of over 4000 (38%) surveys were returned. Preliminary results show widespread consensus on the importance of agriculture and natural resources in Waupaca County. Survey results also show a more divided response on how best to protect farmland and natural resources. Landowners offered a range of specific strategies to address both farm and rural non-farm development. The

Waupaca County Comprehensive Core Planning Committee and its Public Participation Subcommittee have scheduled an additional meeting in each of the five regional clusters in February to share survey results (see schedule to the left). In addition, countywide and regional survey results are being provided in a written report to each town, village and city. *Greg Blonde*



Public Participation Workshops (all 7:00–9:30 PM)

- Manawa Middle School (Central Region) Feb 2
- Waupaca High School (SW Region) Feb 9
- Clintonville High School (NW Region) Feb 16
- New London High School (SE Region) Feb 22
- Iola/Scandi High School (NW Region) Feb 23

User Friendly Report is Extension Goal

The Waupaca County UW-Extension Office strives to match the knowledge and resources of the University of Wisconsin with the local learning needs of youth, families, businesses, organizations and government. We provide education in four program areas: Agriculture

and Natural Resources; Community and Economic Development; Family Living; and 4-H Youth Development. Your professional Waupaca County staff listen, develop and deliver education to local audiences. We strive to offer practical, timely, relevant, research-based

information to address citizen concerns. This **new report** is intended to share the impact of Extension's work with our county, state and federal partners. It will highlight our response to local situations with educational programs that are making a difference.

Marilyn Herman



“...our teachers covered the information we hoped to learn as new officers.”

4-H Club Officer Training

Every year over eighty young people are elected to hold leadership positions in Waupaca County 4-H Clubs. For many young people this is their first time in an officer role. Club Officer Training is a valuable educational workshop planned and taught by the 4-H Education Committee and Penny Tank, 4-H Program Assistant.

Thirty youth attended 4-H Officer Training. Seven youth and adults taught the individual officer sessions. Penny led the President/

Vice President session with a youth Ambassador.

Educational factsheets were shared with the members and they were given a chance to role-play as president of a club meeting. The closing session focused on helping the youth officers plan a club calendar, yearly budget, and committee work.

For half of the participants this was the first time they were elected to an officer position in their club. Over 60% attended Officer Training for the first time.

Eighty nine percent of the youth participants thought teachers covered the information they were hoping to learn. On a scale of 1 (not prepared for office) to 7 (very prepared), youth rated how they felt before the training program (5.03) and after (6.17). Penny plans to work with the Education Committee to conduct a follow up survey with the young people after they lead a few club meetings.

Penny Tank

Extension Offers InfoSource to Waupaca County

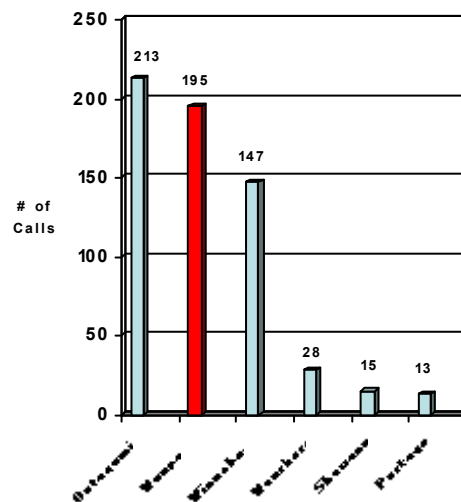
Hundreds of people call or visit the UW-Extension office each year with horticulture questions and lab samples. Agriculture Agent Greg Blonde was glad to learn UW-Extension was expanding the *InfoSource* system from urban counties to all Wisconsin counties. *InfoSource* uses a toll-free telephone system to provide information on horticulture, gardening, as well as home and family topics. Day or night, seven days a week, callers choose from over 600 topics. However, citizens must first have the menu listing topics and dialing codes.

Blonde worked with the local Master Gardeners and Waupaca County Association for Home and Community Education (HCE) to cover the cost of printing 10,000 brochures. Extension volunteers and Extension staff delivered and promoted *InfoSource* brochures with schools, hospitals, clinics, senior centers, greenhouses, nurseries and garden centers, county clerk’s office for all 34 polling sites during spring elections, community libraries, Chamber of Commerce offices and Welcome Wagon representatives for all new county residents.

Compared with neighboring counties, Waupaca had the highest per capita use of *InfoSource* in 2004. The 200 calls covered horticulture (56%), home pest control, food safety, family or youth topics (46%). Local UW-Extension efforts to raise money and coordinate distribution helped bring broader access and new educational resources to our residents.

Greg Blonde

**InfoSource Calls
Jan-Oct, 2004**



Community Partner Advisory Group

UW-Extension is creating Community Partner Advisory Groups (CPAG) in Wisconsin’s 72 counties to ensure that education programs are as effective as possible in addressing local needs. Extension's Dean Leholm brings energy and enthusiasm to the idea of forming the advisory groups. This idea emerged from a task force Leholm formed after becoming dean last fall, saying “We’ll be able to do great things through these CPAGs.” Waupaca County is one of 23 pilot sites beginning this work. Connie Abert, Waupaca County Department Head, was one of the statewide trainers for CPAG. Abert says, “Extension has traditionally utilized public input during our 4 year planning process to identify county needs. These Advisory Groups will provide continuous and key connections between community needs, education programs, and people working in our communities to make a positive difference.” Groups will include diverse county representation and work in cooperation with local UW-Extension Committees. CPAG members will offer programmatic advice and create opportunities for interaction with more county citizens and decision-makers.

Connie Abert

Parents Learn How to Stop Negative Behaviors in Children

Teaching a child to walk or a teen to drive is a process that needs patience and guided practice by parents and caring adults. Parents instinctively know this but often get frustrated with the arguing, fighting, screaming, tantrums and teasing that goes on in many homes. Few have the training to know how to improve a child's social skills or build cooperation between siblings.

Nineteen parents, childcare providers and nursing students enrolled in the two-session program, *1-2-3 Magic: Effective Discipline for Children age 2-12*, sponsored by the Waupaca Family Resource Center and co-taught by Family Living Educator Marilyn Herman and staff from the Waupaca County Healthy Beginnings Program.

One week after learning and practicing the '1-2-3 method' of discipline, 90% of parents reported dramatic reduction in the number of outbursts by their children. In the second session, 100% of parents could focus on building their "bag of tricks" to "start" healthy child behaviors like eating better, doing homework, going to bed, and getting up in the morning.

Marilyn Herman



"Knowing how to use 1-2-3 discipline to teach my children cooperation has made a world of difference in our family."

Sessions Increased Understanding of Private Property Rights

Five educational sessions held throughout Waupaca County helped citizens better understand the private property rights discussion. The 318 people who attended these sessions heard about the history of private property rights, as well as the current definition as determined by the highest courts in the land.

Mike Koles, UWEX Community Development Educator, began the session by reviewing historical arguments that took place during the founding of our country. According to Koles, "Franklin, Jefferson, Adams and Madison couldn't agree on the topic. The debates were so divisive that the topic is pretty much skipped altogether in our founding documents". Koles noted, "This early lack of consensus provides the foundation for an on-going discussion in our country regarding how much control the community should have over an individual's property".

Given that foundation, participants heard from several UW-Extension specialists regarding how the courts currently define private property rights. According to Eric Olson, UWEX Land Use Specialist, "the bottom line is that the community can define what an individual can do with their property so long as it doesn't go too far". This begs the question, 'What is too far?' Olson, stated, "there are many factors that determine when the 'too far' point has been reached, but there is no one formula". For the purpose of comprehensive planning, the session helped participants understand that it is false to argue "I can do whatever I want on my property", but it is also false to argue "the government can regulate your property in any way it wants". In fact, the truth is somewhere in the middle – "the community can regulate your property in the best interests of society so long as it doesn't go too far".

Program evaluation revealed that over 95% of participants increased their knowledge of private property rights, many indicating that they more than doubled their knowledge. The increased knowledge base will help make future discussions on the topic much easier and balanced.

Mike Koles

"...the community can regulate your property in the best interests of society so long as it doesn't go too far."

For More Information or Questions about these articles, please contact the Extension Educator listed at: (715) 258-6230

Waupaca County UW-Extension

Waupaca County Courthouse
811 Harding Street
Waupaca, WI 54981

Phone: (715) 258-6230

Fax: (715) 258-6232

We're on the web:

<http://www.uwex.edu/ces/cty/waupaca/>



Learning for Life

Our Mission: To extend the knowledge and resources of the University System to the people of Waupaca County and Wisconsin.

Our Vision: To serve Wisconsin's educational network, engaging the people of Waupaca County and our communities in positive change.

UW-Extension offers equal opportunity programs and employment.

Waupaca County Board Supervisors

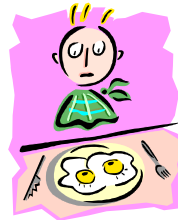
Bev Haug Retires



UW-Extension Support Staff Bev Haug retired January 5 after 22 years of dedicated service to Waupaca County. Bev spent the last eight years of her service in the Extension office and the preceding years with the District Attorney's Office. Extension Department Head, Connie Abert,

shared that "Bev was critical to the success of this office and key to Extension's impact. Bev always volunteered to do more than was asked of her and she will be dearly missed." A farewell luncheon gathered over 50 county colleagues who wished her well in retirement and on her upcoming trip to Florida.

Mike Koles



School Breakfast Programs

Waupaca County's 2002 Health Assessment revealed

childhood obesity as a top health concerns in the county. UWEX assisted the Health Department in designing a process to include community partners in responding to this multifaceted problem. Nutrition and exercise became the biggest targets for the newly formed coalition, **NuAct**.

Extension Youth Educator Abert began work with schools on more and better nutritional choices. One of the important pieces was an

enhanced school breakfast program sponsored by Senator Kohl. UWEX educators Abert and Herman assisted four of the seven school districts to write breakfast grants and all received funding for 2005. These schools will now be able to offer free breakfast to children participating in reduced lunch as well as buy additional equipment to serve breakfast to all their students. **Breakfast plays an important part in academic achievement,** but from local surveys we know that only a few children eat a nutritious breakfast before heading to school.

Connie Abert