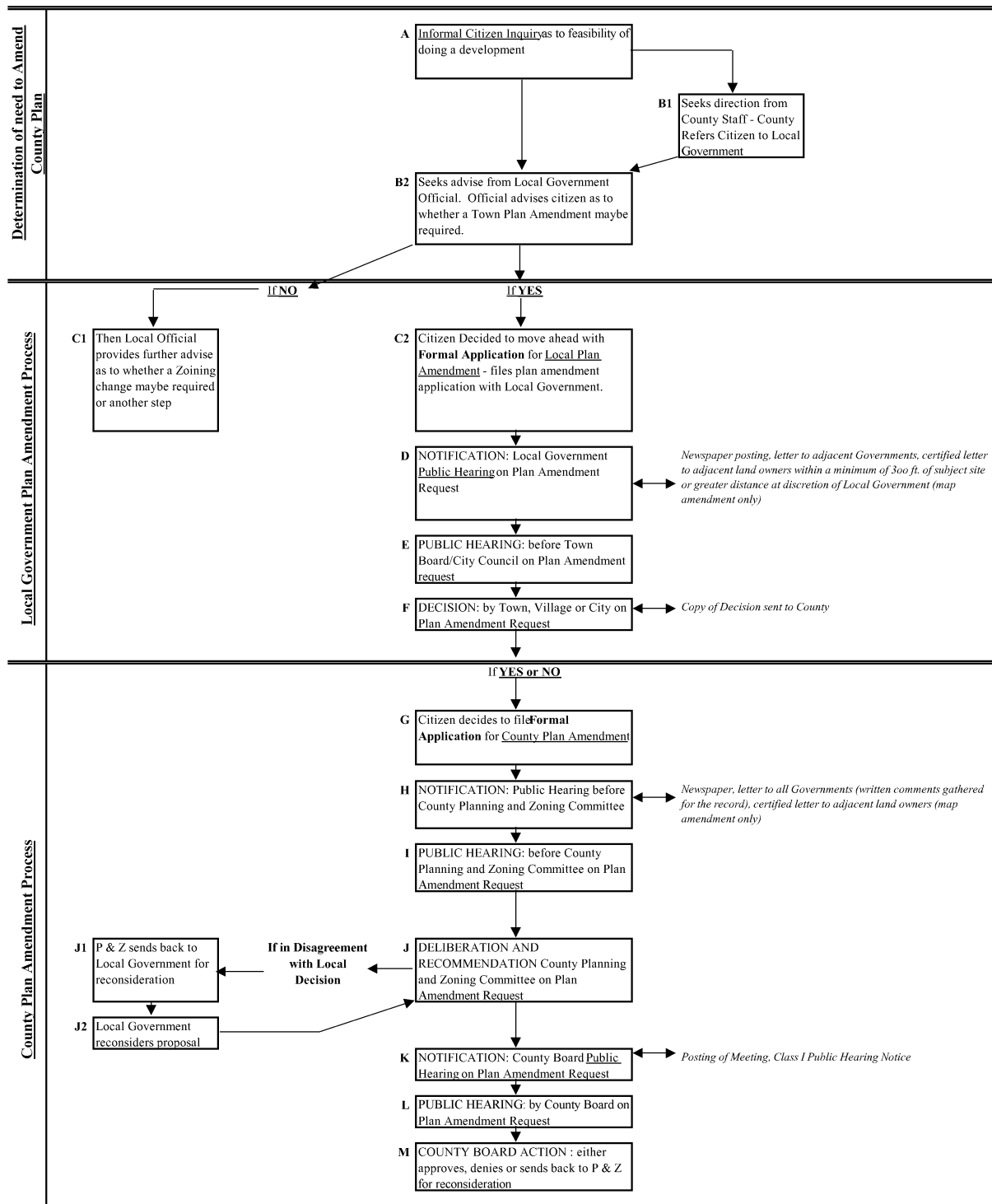


EXHIBIT 2

County Plan Amendment Process (Flow Chart)



Note on Recourse:

If applicant does not receive approval at local Government Level and approval at County Level then the following opportunities are available; a) reapply, b) reapply with changes, c) appeal to the courts, d) do nothing. (the applicant can employ anyone of these options (a, b, c or d) at anytime during the process).