



## Responders Meeting

The shortest distance between now and the future is a story.

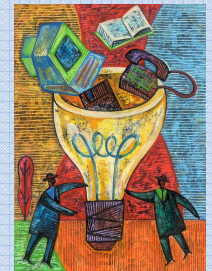


Thank you for going the distance to help us tell the story of Cooperative Extension through the lens of the Situation Analysis portion of the strategic planning process.

Thursday, December 6, 2007 Noon - 5PM  
Country Springs Hotel  
1501 North Point Drive, Stevens Point, Wisconsin

### What is a Situation Analysis?

A Situation Analysis involves research and analysis of both internal and external environmental factors, consideration of organizational successes and failures, and the impact of the organization's past and present abilities to reach its goals.



### We need your help!

Have you ever read a book with too much information? It can be exhausting and overwhelming! The Strategic Planning Steering Committee has done a quick read analysis of the data that has come in so far, and now we'd like your help with identifying the themes that are emerging – sort of a “first draft” of identifying the issues that will be addressed in our strategic planning process!



### What can you do to prepare?

1. Come hungry! We're feeding you lunch!
2. Be prepared to interact and share your own stories. Your stories will help enrich the data that we are in the process of collecting. Please think about two experiences that you have had (or are aware of):
  - A. A story that illustrates something that Cooperative Extension should think about changing to in order to be more effective in the future.
  - B. A story that illustrates something that makes you proud about your work in Cooperative Extension.
3. If you have a chance, take a quick read of the “Situation Analysis Snapshots.”
4. Come with vision and idealism for helping to create a positive future for UW-Extension - Cooperative Extension!

