

Tell Us About You...

Professor Popcorn Preprogram Evaluation

Today's Date: _____ My Teacher Is: _____

For questions 1-6, **CIRCLE THE ONE ANSWER THAT BEST DESCRIBES what YOU do.**

1. I wash my hands before I touch or eat food.

Almost always

Sometimes

Not very often



2. If I think a food may be "spoiled", I ...



a. cook it.



b. taste it to see if it tastes OK.



c. throw it in the trash.

3. I eat different kinds of fruit every day.

Almost always

Sometimes

Not very often



4. I eat different kinds of vegetables every day.

Almost always

Sometimes

Not very often



5. I drink milk or eat cheese at least three times a day.

Almost always

Sometimes

Not very often



6. I am physically active every day (I do things like run, play sports, walk to or from school, dance, ride a bike, exercise, or rollerblade).

Almost always

Sometimes

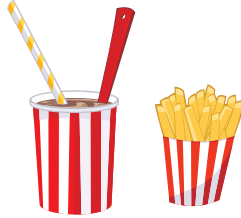
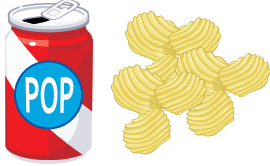
Not very often



Professor Popcorn Preprogram Evaluation (Continued)

For questions 7-10, CIRCLE the ONE CORRECT ANSWER for each question:

7. What is the healthiest snack choice?

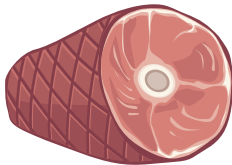


a. Soda pop and chips

b. Milkshake and fries

c. Fruit juice and pretzels

8. Which food would always be safe to pack in a sack lunch?



a. Sliced ham

b. Peanut butter

c. Sliced cheese

9. How long should I wash my hands before I touch or eat food?



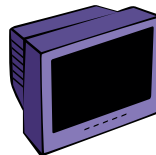
a. As long as it takes to say my name

b. As long as it takes to sing "Happy Birthday"

c. As long as it takes to eat an apple



10. Which activity can help keep me healthy?



a. Playing computer games

b. Watching television

c. Walking

REVISED 6/02

It is the policy of the Purdue University Cooperative Extension Service, David C. Petritz, Director, that all persons shall have equal opportunity and access to the programs and facilities without regard to race, color, sex, religion, national origin, age, marital status, parental status, sexual orientation, or disability. Purdue University is an Affirmative Action employer.

This material may be available in alternative formats.

1-888-EXT-INFO

<http://www.ces.purdue.edu/extmedia/>