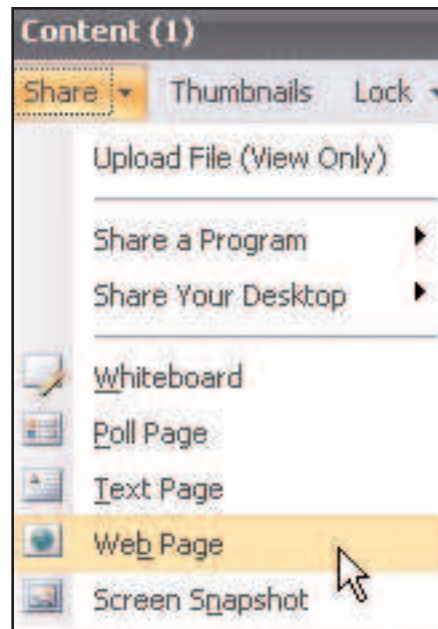


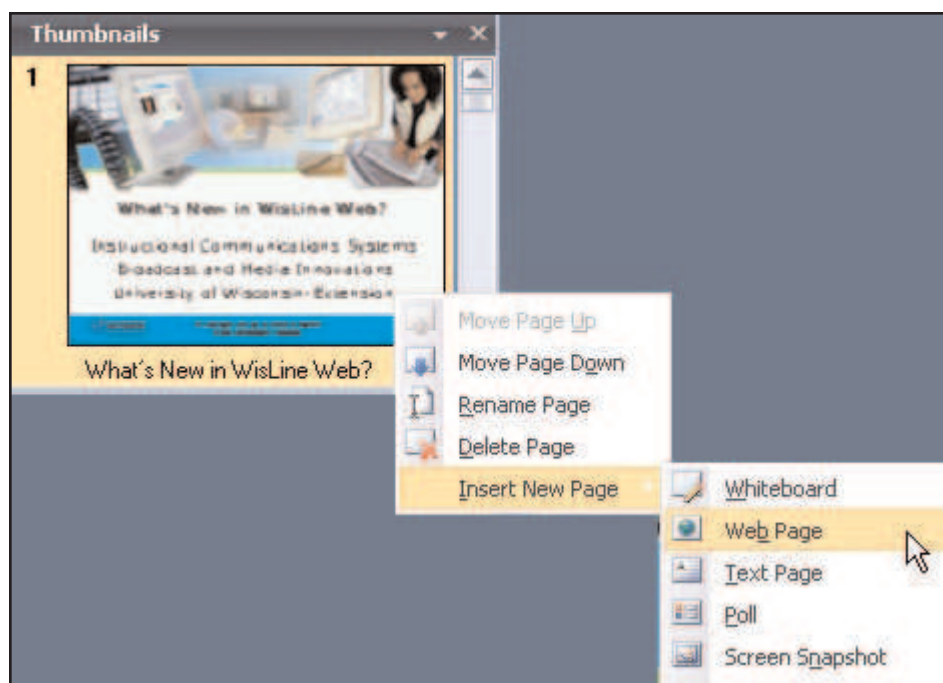
## Sharing a Web Page

The Sharing a Web Page feature enables you to send your participants to a web page and let them browse on their own without having to follow you or anyone else. Please note that if you wish to lead participants through a web page, where they will automatically follow you, you should use the Program Sharing feature, not the Web Page feature.

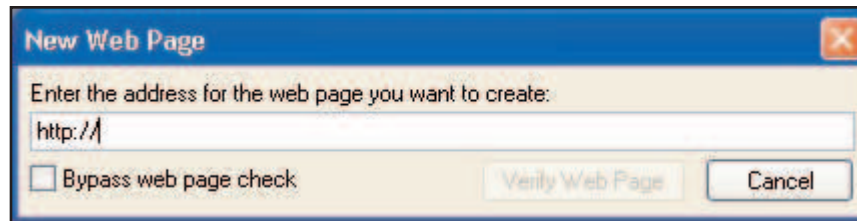
To create the Share Web Page as a resource in the Content pane, click on the Share menu in the Content pane and then choose Web Page.



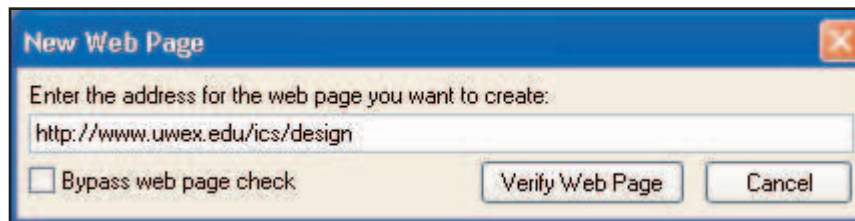
To create the Share Web Page as a slide in your slide set, right-click on a thumbnail in the Thumbnails pane and choose Insert New Page. From the Insert New Page menu, choose Web Page.



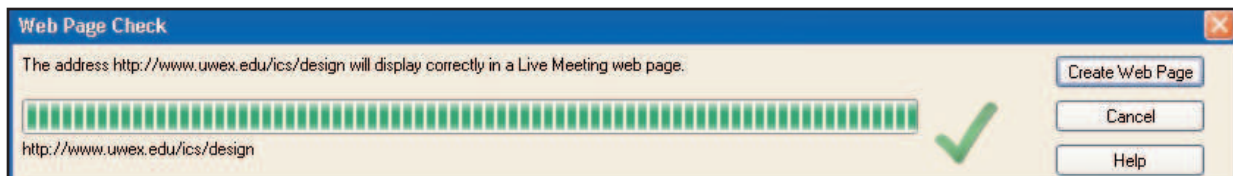
After you make your choice, a window will open for you to fill in the URL of the web page to which you wish to direct your participants. The “http://” portion of the URL will already be filled in.



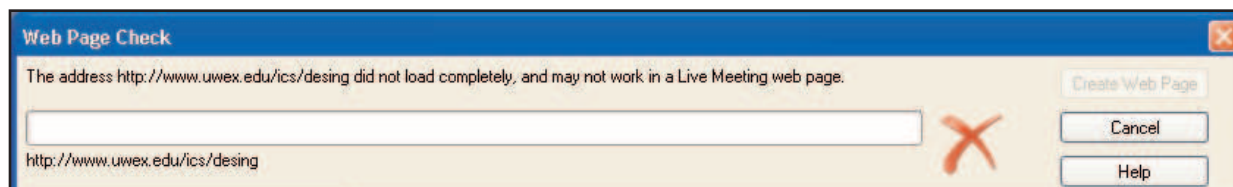
After you finish filling in the remainder of the URL, click on the Verify Web Page button. If you change your mind, you can click the Cancel button. Only click the Bypass web page check box if you have used the same web page recently in WisLine Web without problems.



After you click the Verify Web Page button, WisLine Web will try to find the web page and make sure that it will work. When it has been verified, a green check mark will appear in the Web Page Check window and the Create Web Page button will be useable.



If a red X appears in the Web Page Check window, the Create Web Page button will be grayed out and you will not be able to use it. Getting the red X means that either you have entered the URL incorrectly and it cannot find the web page, or that there is something within the web page itself that conflicts with WisLine Web and will cause a failure if the page is used.



Once you get the green check mark, click on the Create Web Page button and your web page will appear. All participants will be able to navigate this page independently and follow links as they wish. You will not see which links they have followed. You and your participants will also notice that there are no navigation features such as an Address window or Back button. If a participant follows a link and then wants to go back, they will need to right-click on an empty area of the screen and choose Back from the menu that appears.