

RELATIONSHIP BETWEEN TEAT-END CALLOSITY OR HYPERKERATOSIS AND MASTITIS

F.Neijenhuis¹, G.A.Mein², J.S.Britt³, D.J.Reinemann³, J.E.Hillerton⁴, R.Farnsworth³,
J.R.Baines⁴, T.Hemling³, I.Ohnstad⁴, N.B.Cook³, and W.F.Morgan²
Teat Club International, c/o F. Neijenhuis, Research Institute for Animal Husbandry
PO Box 2176, 8203 AD Lelystad, The Netherlands. Email: f.neijenhuis@pv.agro.nl
Co-authors from: The Netherlands¹, Australia², USA³, UK⁴

Paper Presented at the Proceedings, AABP-NMC International Symposium on Mastitis and Milk Quality, Vancouver, BC, Canada. September 2001.

Introduction

The teat canal is the primary physical and chemical barrier to invasion of mastitis pathogens into the udder (Hamann, 1987). The smooth muscles surrounding the teat duct should be contracted and the teat canal tightly closed between milkings to impede bacterial passage from the teat orifice into the interior of the gland (Nickerson, 1994). A teat-end in good condition is an important resistance factor to bacterial colonization of the mammary gland (Michel et al., 1974). Changes in teat tissue by milking, teat canal integrity, and teat tissue pliability may favour penetration of bacteria into the udder (O'Shea et al., 1987).

Veterinarians and others require a simple and reliable method for evaluating teat health in dairy herds. A complete protocol for systematic evaluation of teat condition in commercial herds is proposed by a group of international experts on teat condition (Mein et al., 2001). The new protocol includes an assessment of teat-end callosity (TEC). The evaluation of teat-end callosity is based on a research classification system. This paper covers information about the relationship between teat-end callosity and udder health.

Teat-end callosity

After repeated milkings, changes appear in teat-end tissue, resulting in the development of a callous ring around the teat orifice. Cow factors like teat-end shape, teat position, teat length, milk production, lactation stage, and parity show a relationship with callused teat-ends (Bakken, 1981; Graf, 1982; Johannson, 1957; Michel et al., 1974; Neijenhuis et al., 2000; Rathore, 1977; Sieber and Farnsworth, 1981). As early as 1942, "eroded" teat orifices were linked to machine milking (Espe and Cannon, 1942). It is clear from more recent histological studies that the observed changes result from an increase or build up of callous tissue around the orifice rather than an 'erosion' of teat tissue or the orifice. The changes are associated with mechanical forces exerted by vacuum and the moving liner during machine milking. The magnitude of the force depends on milking vacuum, pulsation vacuum, machine-on time, liner type, and teat shape (Ebendorff and Ziesack, 1991; Hamann, 1987; Mein and Thompson, 1993; Rasmussen, 1993). The huge variation in the frequency of callosity between herds using similar milking systems suggests that a major genetic influence to susceptibility should not be overlooked (Shearn and Hillerton, 1996).

Classification system

Teat-end callosity can be classified visually. Several systems have been developed (for example Sieber and Farnsworth, 1981, and more recently Shearn and Hillerton, 1996). The classification system adopted in The Netherlands includes marked differences in the thickness of the callosity ring (TECT), which is transformed to five classes: none (N), slight (A), moderate (B), thick (C) and extreme (D). Average TECT of teats was calculated by using the unit scores from 1 to 5. Additionally the ring is classified as smooth (1) or rough (2) (Neijenhuis et al., 2000). This system is proposed by the “Teat Club International” for research purposes (Mein et al., 2001).

Microscopic features of teat-en callosity

There is a good similarity between the macro- and microscopic ranking of the teat-end callosity rings (Fig 1). Teat-end callosity consists of a hyperplasia of the Stratum corneum (Neijenhuis et al., 2000b). Thicker callosity rings show parakeratosis and nuclei are shown. Teats with a greater teat-end callosity score show perivascular reactions such as infiltration of lymphocytes, granulocytes or erythrocytes. With thick callosity, the outside portion of the teat canal might not close as tightly and micro-organisms may penetrate further into the canal. The surface of the callous ring can become rough (category 2). Rough callosity may provide crevices for pathogenic bacteria to lodge, thereby making successful teat disinfection more difficult and increasing the risk rate of new intra mammary infection.

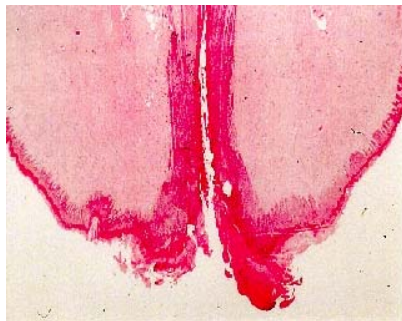


Figure 1. Microscopic view of a teat-end with a thick rough callosity ring (2C).

Photo: Utrecht University. Drs A. de Man, Dr Y.H. Schukken & Drs J.P. Koeman

Intra mammary infection

Severe teat-end lesions (scabs) are positively associated with the prevalence of subclinical mastitis or bacterial colonization (Sieber and Farnsworth, 1981; Jackson, 1970; Fox and Cumming, 1996). For the past 20 years, it has been widely accepted that the presence of chronic smooth or rough rings on teat-ends is not associated with a significant increase in risk of mastitis (Sieber and Farnsworth, 1981). Results of two new studies provide a different perspective, however.

Data from the Netherlands indicate a significantly lower risk of clinical mastitis in quarters with teats classified as having mild or moderate smooth rings compared with teats classified as having no ring or rough rings (Neijenhuis et al., 2000). Clinical mastitis cows had higher TEC scores than their healthy peers, particularly when clinical mastitis occurred between the second and fifth month of lactation. Mastitis cases in the first month of lactation may appear because of the depressed immune system at parturition and impaired smooth muscle contraction (Goff and Horst, 1997).

The results of a smaller study (2000 quarters) in the UK show a similar, but not statistically significant, pattern of increased risk of sub-clinical mastitis (inferred from CMT positive or negative quarters) with poorer teat-end scores (Lewis et al., 2000). The risk ratio for teat-ends classified as normal was higher than for those with smooth rings (1.0 versus 0.7) in the UK

study but again not statistically significantly. Interestingly, this same pattern of results can be seen in the original data of Sieber and Farnsworth (1981). Again, although not significantly different, the percentage of quarters sub-clinically infected in that USA study was numerically lowest for teats with mild smooth chronic rings compared with either no rings or moderate/severe rough rings.

Unpublished data from the USA (pers. comm. S.P. Jones and J. Britt, 2001) on one large farm also showed increased risk of clinical mastitis and higher SCC for cows with one or more “bad” teat-ends compared to cows with 4 healthy teat-ends. “Bad” teats had a score of 3 or more according to the system of Britt and Farnsworth (1996).

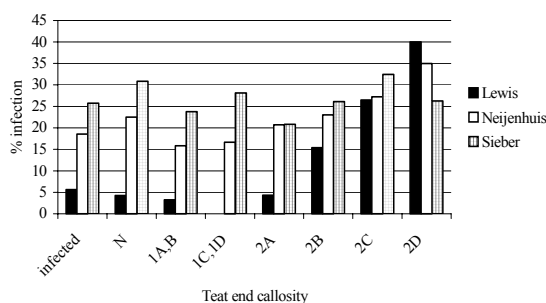


Figure 2. Percentage of quarters infected in 3 different studies according to the teat end callosity (raw data).

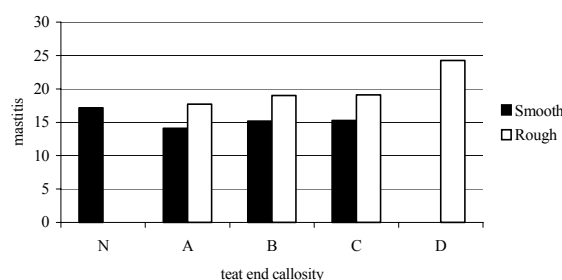


Figure 3. Probability of clinical mastitis (%) of second parity cows in the beginning of the lactation with round teat ends for different teat end callosity scores.

In summary, the pattern of results from the three studies (Fig. 2) appears to match the model proposed by Hamann (1987). In drawing attention to these patterns, we are not suggesting that a smooth ring around a teat orifice will have any clinical benefit *per se*. Clearly, the integrity of the teat canal lining and the teat orifice are the keys to minimising the risks of mastitis infection. Perhaps the presence of a smooth ring is associated with a mild thickening of the keratin seal and underlying germinal layers of skin in the teat canal and teat orifice. Mild hyperplasia is a basic (normal) physiological response to the forces imposed by milking. Under the correct milking conditions, it may reflect a healthy balance between the degree of desquamation per milking and the rate of regeneration of keratin within the teat canal (Williams and Mein, 1985; Lacy-Hulbert, 1998).

Longitudinal field study

In the Dutch study (Neijenhuis et al., 2001), 57,762 teat-end scores were eligible for inclusion in the analysis for the probability of clinical mastitis. Within this data-set cows were selected that had clinical mastitis during that lactation and had one or more records on TEC from 5 months before to 5 months after the mastitis occurred (10,712 records). For the analysis of probability of clinical mastitis in the month following that TEC observation, 974 records were selected. Because teat-end shape, days in milk and parity are known to influence the TEC, all these factors were included in the model to analyse the probability of clinical mastitis.

Roughness of the teat-end callosity increased the probability that the cow will develop clinical mastitis during the lactation from 17% for smooth rings to 21% as did the probability that the cow will develop clinical mastitis in the month following that TEC observation (from 1.4 to 1.9%). The probability of clinical mastitis differed within different stages of lactation and teat-end shapes and, different teat-end callosity thickness scores. It appears that teat-ends with no callosity ring are more susceptible if they are pointed rather than inverted. Inverted teats are more at risk when the callosity ring is thick. The probability of clinical mastitis decreases as lactation progresses.

The average probability of clinical mastitis the following month was, per TECT class, 3.8% for N, 1.5% for A, 1.8% for B, 2.7% for C and, 2.9% for D. The probability of clinical mastitis during the lactation was 22.1% for N, 17.8% for A, 19.1% for B, 21.2% for C and, 36% for D. Because of the interaction between teat-end callosity, lactation stage and teat-end shape, the data was analysed for a specific lactation stage and teat-end shape. Figure 3 shows an example of the probability of clinical mastitis for different teat-end callosity scores.

Conclusion

A small amount of teat-end callosity does not appear to increase the risk of intra-mammary infection in the lactating dairy cow, and may be considered as a beneficial physiological response of the teat to machine milking. A greater degree of teat-end callosity and roughness is associated with an increased probability of new intra-mammary infections. Evaluation of teat-end callosity in commercial herds may help to identify or resolve problems related to milking management, environment or the milking machine.

References

- Bakken, G. 1981. Relationships between udder and teat morphology, mastitis and milk production in Norwegian Red Cattle. *Acta Agric. Scand.* 31:438-444.
- Britt J.S. and R. Farnsworth. 1996. Here's a system for evaluating teat condition. *Hoard's Dairyman*, August 25: 570-571.
- Ebendorff, W. and J. Ziesack. 1991. Studies into reduction of milking vacuum (45 kPa) and its impact on teat stress, udder health as well as on parameters of milk yield and milking. *Mh. Vet. Med.* 46:827-831.
- Espe, D. and C.Y. Cannon. 1942. The anatomy and physiology of the teat sphincter. *J. Dairy Sci.* 25:155.
- Fox, L. K. and M.S. Cumming. 1996. Relationship between thickness, chapping and *Staphylococcus aureus* colonization of bovine teat tissue. *J. Dairy Res.* 63:369-375.
- Goff, J. P. and R.L. Horst. 1997. Physiological changes at parturition and their relationship to metabolic disorders. *J. Dairy Sci.* 80: 1260-1268.
- Graf, R. 1982. Teat-end lesions caused by machine milking in cows. *Vet. med. Diss. Univ. München*: 105p.
- Hamann, J. 1987. Machine Milking and Mastitis Section 3: Effect of Machine Milking on Teat End Condition - A Literature Review. *Bull. IDF* 215: 33-53.
- Jackson, E.R. 1970. An outbreak of teat scores in a commercial dairy herd possibly associated with milking machine faults. *Vet. Rec.* 87:2-6
- Johansson, J. 1957. Investigation on variation in udder- and teat shape of cows. *Z. Tierz. Züchtungsbiol.* 70:233.

- Lacy-Hulbert, J. 1998. Physical characteristics of the teat canal and the relationship with infection. NMC annu. meeting.:54-61
- Lewis, S., P. Cockcroft, R.A. Bramley, and P.G.G. Jackson. 2000. The likelihood of subclinical mastitis in quarters with different types of teat lesions in dairy cows. *Cattle Practice* 8:293-299.
- Mein, G.A., F. Neijenhuis, W.F. Morgan, D.J. Reinemann, J.E. Hillerton, J.R. Baines, I. Ohnstad, M.D. Rasmussen, L. Timms, J.S. Britt, R. Farnsworth, and N.B. Cook. 2001. Evaluation of bovine teat condition in commercial dairy herds: 1. Non-infectious factors. These proceedings.
- Mein, G.A. and P.D. Thompson. 1993. Milking the 30,000-Pound Herd. *J. Dairy Sci.* 76:3294-3300.
- Michel, G., W. Seffner, and J. Schulz. 1974. Hyperkeratosis of teat duct epithelium in cattle. *Mh. Vet. Med.* 29:570-574.
- Neijenhuis, F., H.W. Barkema, H. Hogeveen, and J.P.T.M. Noordhuizen. 2000. Classification and longitudinal examination of callused teat ends in dairy cows. *J. Dairy Sci.* 83:2795-2804.
- Neijenhuis, F., K.C. de Koning, G. Klungel, H.W. Barkema, and H. Hogeveen. 2000b. The effects of machine milking on teat condition. 51th Meeting European Association Animal Production (EAAP), The Hague, The Netherlands.
- Neijenhuis, F., H.W. Barkema, H. Hogeveen, and J.P.T.M. Noordhuizen. 2001. Relationship between teat end callosity and incidence of clinical mastitis. in prep.
- Nickerson, S.C. 1994. Bovine mammary gland - structure and function - relationship to milk production and immunity to mastitis - rev. *Agri – Practice* 15:8-18.
- O'Shea, J. 1987. Machine Milking and Mastitis Section 2: Machine Milking Factors Affecting Mastitis - A Literature Review. *Bull. Int. Dairy Fed.* 215:5-32.
- Rasmussen, M.D. 1993. Influence of Switch Level of Automatic Cluster Removers on Milking Performance and Udder Health. *J. Dairy Res.* 60:287-297
- Rathore, A.K. 1977. Teat shape and production associated with opening and prolapse of the teat orifice in friesian cows. *Br. Vet. J.* 133:258-262.
- Shearn, M.F.H. and J.E. Hillerton. 1996. Hyperkeratosis of the teat duct orifice in the dairy cow. *J Dairy Res.* 63:525-532.
- Sieber, R.L. and R.J. Farnsworth. 1981. Prevalence of chronic teat-end lesions and their relationship to intramammary infection in 22 herds of dairy cattle. *J. Am. Vet. Med. Ass.* 178: 1263-1267.

Williams, D.M. and G.A. Mein. 1985. The role of machine milking in the invasion of mastitis organisms and implications for maintaining low infection rates. *Kiel. Milch. Forschungsber.* 37:415-424.