

Dodge County Agriculture

Value and Economic Impact

Agriculture is an important economic force in Dodge County. It includes hundreds of family-owned farms, related businesses and industries that provide equipment, services and other products farmers need to process, market and deliver food and fiber to consumers. The production, sales and processing of Dodge County's farm products generate employment, economic activity, income and tax revenue.



Cash receipts from farm marketing are integral to Dodge County's rural economy. The county consistently ranks among the top five producers in the state for corn used for

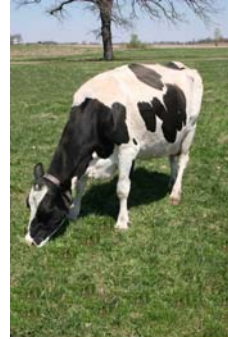
silage and grain, alfalfa hay, winter wheat, sweet corn, peas, soybeans, hogs and pigs, cattle and calves, and milk and cheese production. Dodge County's large and diverse agriculture production industry supports many processing and food manufacturing businesses that provide employment opportunities and add value to the raw products.

How important is agriculture to Dodge County's economy?

- Agriculture provides jobs for 9,508 Dodge County residents.
- Agriculture accounts for \$1.41 billion in economic activity.
- Agriculture contributes \$363.6 million to the county's total income.
- Agriculture pays \$34.3 million in taxes. This figure does not include all property taxes paid to local schools.

Who owns the farms?

- Individuals or families 87.4%
- Family partnerships 7.7%
- Family-owned corporations 4.2%
- Non-family corporations 0.6%



Agriculture provides jobs

Dodge County agriculture provides 9,508 jobs. That's almost 20 percent of Dodge County's workforce of 48,463 people. These jobs are diverse—farm owners, on-farm employees, veterinarians, crop and livestock consultants, feed and fuel suppliers, food processors, farm machinery manufacturers and dealers, barn builders and agricultural lenders, just to name a few. Every new job in agriculture generates an additional 0.9 jobs in Dodge County.

Agriculture stimulates economic activity

Dodge County agriculture generates over \$1.4 billion in economic activity, accounting for about 28 percent of Dodge County's total economic activity. Every dollar of sales of agricultural products generates an additional \$0.39 of economic activity in other parts of the Dodge County economy.

Here's how agriculture's \$1.4 billion economic impact breaks down:

- The direct effect of agriculture is **\$1.01 billion** and includes the sale of all farm products and value-added products.
- Purchases of agricultural inputs and services create another **\$318.2 million** in economic activity; for example, business-to-business purchases such as fuel, fertilizer, feed, farm equipment, veterinary services and crop consultants.
- This business-to-business activity then generates another **\$79.4 million** in economic activity, because people who work in agriculture-related businesses spend their earnings.

Agriculture contributes to Dodge County income

Agriculture accounts for \$363.6 million—16.3 percent of Dodge County’s total income. This includes wages, salaries, benefits and profits of farmers and workers in agriculture-related businesses. Every dollar of agricultural income generates an additional \$0.95 of county income.

Agriculture pays taxes

Economic activity associated with Dodge County’s farms and agriculture-related businesses generates \$34.4 million in local and state taxes. This figure does not include all property taxes paid to support local schools. If it did, the number would increase dramatically.

Table 1. Taxes paid by agriculture

Corporate profit tax	\$ 2.0 million
Fees/charges/other	\$ 5.4 million
Income tax	\$ 8.1 million
Sales tax	\$ 8.5 million
Property tax	\$10.3 million
Total	\$34.3 million

Dodge County agriculture is diverse

Dodge County farmers produce a variety of products. Dairy, grain, cattle and calves, vegetables and poultry are the main commodities.



Table 2. Dodge County’s top commodities (Sales by dollar value, 2002)

1. Milk	\$ 87.1 million
2. Grain	\$ 42.5 million
3. Cattle and calves	\$ 27.0 million
4. Vegetables	\$ 6.0 million
5. Poultry	\$ 5.2 million

Dairy’s impact in Dodge County

Dairy is the largest part of Dodge County’s agriculture. Dodge County milk producers and the dairy industry contribute \$853.2 million to the county’s economy. The on-farm production and sale of milk accounts for

\$127.9 million in economic activity. The processing of milk into dairy products accounts for another \$822.3 million.

- One dairy cow generates \$2,167 in direct income to producers.
- Each dairy cow generates more than \$15,000 to \$17,000 of economic activity.
- Fifteen plants process dairy products in Dodge County.
- Dodge County’s on-farm milk production and dairy processing account for 4,263 jobs.



Horticulture is growing in Dodge County

The production of landscape trees and plants as well as landscape and grounds maintenance are rapidly growing segments of Dodge County’s agricultural industry. Greenhouses, tree farms, nurseries and other horticultural businesses add to the diversity of agriculture in the county. Horticulture generates \$2.1 million in county economic activity, providing 22 full-time jobs and many seasonal jobs.

Agriculture and the environment

Dodge County farmers own and manage the resources on 404,054 acres of land—72 percent of all land in the county. This includes pastures, cropland and tree farms. Farmers implement various conservation practices to protect environmental resources and provide habitat for wildlife.



Produced in 2004 to increase the awareness of agriculture in Dodge County by: University of Wisconsin-Extension, Cooperative Extension, Wisconsin Farm Bureau Federation, Wisconsin Milk Marketing Board, Dodge County Forage Council, Dodge County Corn & Soy Association, Dodge County Farm Bureau, Wisconsin Women for Agriculture - Rock River Chapter, Dodge County Dairy Promotion Committee, Dodge County 4-H Leaders Association.

Economic data (2000) provided by: Steve Deller, professor of agriculture and applied economics, College of Agricultural and Life Sciences, University of Wisconsin-Madison and community development specialist, University of Wisconsin-Extension, Cooperative Extension.

For more information, contact:
Dodge County UW-Extension
127 E Oak Street
Juneau, WI 53039-1379
920-386-3790

Photos: 1st page, Matt Hanson, 2nd page, Daphne Holterman, Mike Ballweg

An EEO/AA employer, the University of Wisconsin-Extension, Cooperative Extension provides equal opportunities in employment and programming, including Title IX and Americans with Disabilities (ADA) requirements.